

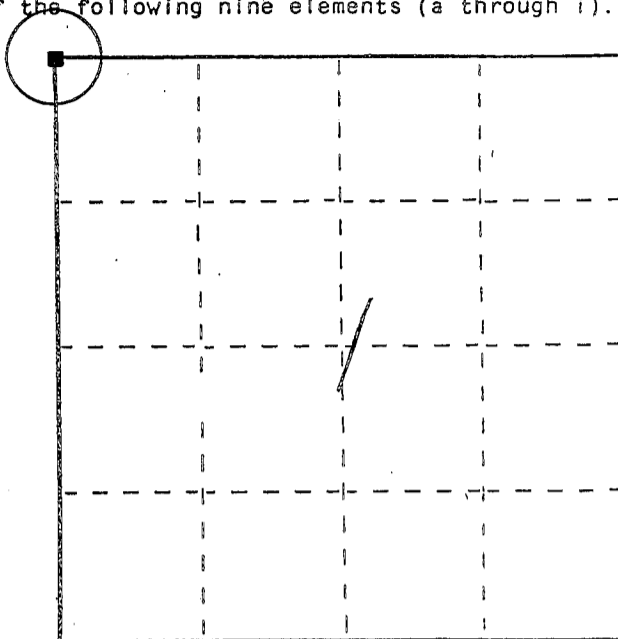
# U. S. PUBLIC LAND SURVEY MONUMENT RECORD

JAN 10 1988

INSTRUCTIONS: This record shall show the location of the corner and shall include all of the following nine elements (a through i).

- (a) Identify the corner by reference to the U.S. public land survey system.
- = Corner monument restored.

NORTHWEST CORNER  
 SECTION 1  
 TOWN 6 NORTH  
 RANGE 5 WEST  
 MILLVILLE TOWNSHIP  
 GRANT CO., WIS.



- (b) Describe any record evidence, monument evidence, occupational evidence, testimonial evidence or any other material evidence you considered, and whether the monument was found or placed.

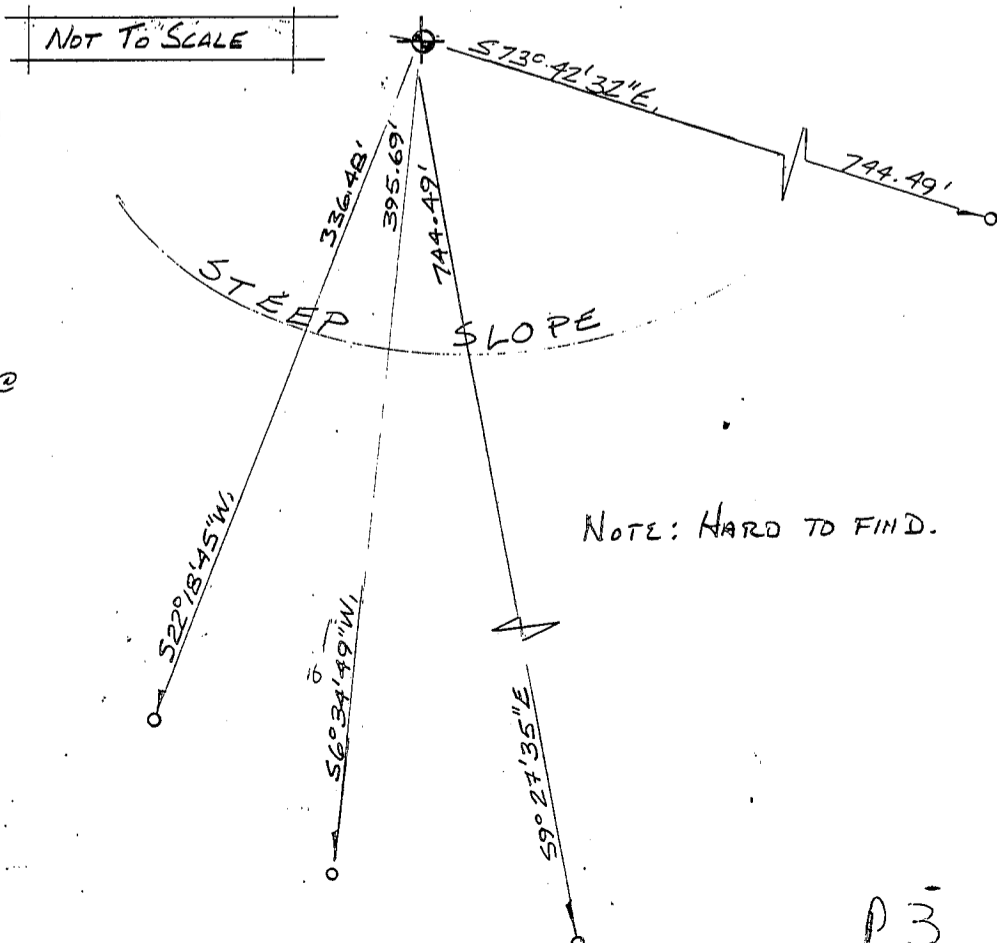
FOUND and ACCEPTED a 1 1/4" DIAMETER, ROUND, SOLID IRON ROD AS FOUND BY BRUCE CECKA ON MAR 16, 1988

- (c) In the plan view drawing below, provide reference ties to at least 4 witness monuments, or, if the location is within a municipality, to at least 2 witness monuments. (Witness monuments shall be made of concrete, natural stone, iron or other equally durable material, ~~except~~ ~~wood~~.) Describe witness monuments.

- (d) Show a plan view drawing depicting the relevant monuments and reference ties which is sufficient in detail to enable accurate relocation of the corner monument if the corner monument is disturbed. Indicate north.

### LEGEND

- No. 4x18" REBAR SET
- EXISTING 3/4" Ø REBAR
- ⊙ EXISTING 1 1/4" Ø REBAR @ NW CORNER SEC. 1



(e) Describe any material discrepancy between the location of the corner as restored or reestablished and the location of that corner as previously restored or reestablished by distance and direction. Show the discrepancy on the plan view drawing under (d), above. Show the distances between the corner as previously restored or reestablished and (1) the corner as restored or reestablished, and (2) to at least 2 of the witness monuments shown on the drawing in (d), above.

NONE

(f) Was the corner restored through acceptance of (1) an obliterated evidence location, or, (2) a found perpetuated location?

(2)

(g&h) Was the corner reestablished through lost corner proportionate methods? If so, show the method, including the directions and distances to other public land survey corners used as evidence or used for proportioning in determining the corner location?

No.

Affix Land Surveyor Seal



(1) I, BRUCE D. BOWDEN

(type or print name) certify that the corner location shown on this record was determined by me or under my direction and control and that this U.S. Public Land Survey Monument Record is correct and complete to the best of my knowledge and belief.

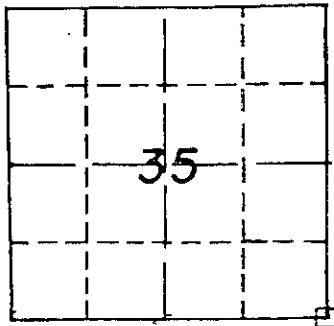
Signature

Date

Bruce D. Bowden Jan 5, 1994

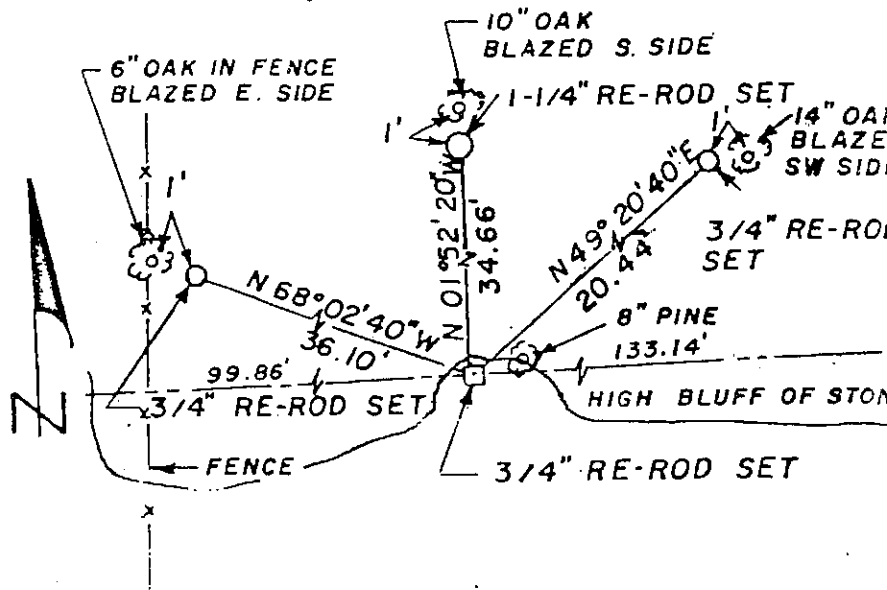
GOVERNMENT CORNER REFERENCE  
Grant County, Wisconsin

Government corner 35 | 36  
 Township 7 North  
 Range 5 West  
 Date of survey 11/20/77  
 Fieldbook \_\_\_\_\_



LOCATION SKETCH

This space for drawing of corner showing: type of Monument set, distance and direction to reference monument, a note if distances are not measured on a horizontal plane, and where measurement is taken on reference point.



BEARINGS ARE BASED ON MAGNETIC NORTH  
AS OBSERVED, 11/13/75

**SURVEYORS AFFIDAVIT** (Surveyor must certify the method by which the above described corner STATE OF WISCONSIN } <sup>ss</sup> has been located or relocated.)  
 COUNTY OF GRANT }

I hereby certify that the SE corner was re-established by running horizontal control throughout Sections 25, 26, 35 and 36, T7N, R5W and that said control contained the best available physical evidence and was correlated by computation with the original government survey notes to determine the position shown. I further certify that the original government survey ties to a "high bluff of stone" were used to determine the position of said corner and that a 3/4 inch solid round iron rod was set and referenced as shown and that said iron will be replaced by a State of Wisconsin cast aluminum magnetized monument at the convenience of the Department of Natural Resources.

*Harry M. Burdwell*  
 Registered Land Surveyor - Number S-516

CORNER NUMBER