

U.S PUBLIC LAND SURVEY MONUMENT RECORD - GRANT COUNTY, WI

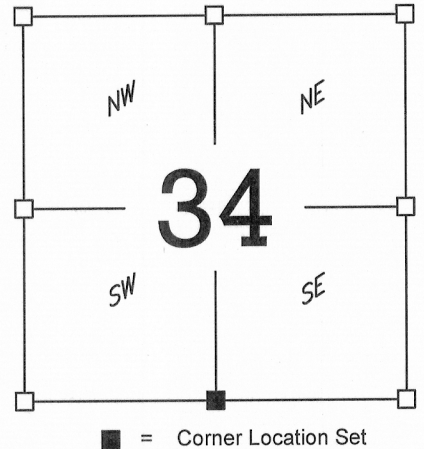
Section 34, Town 7 North, Range 5 West, Town of Millville

Certificate

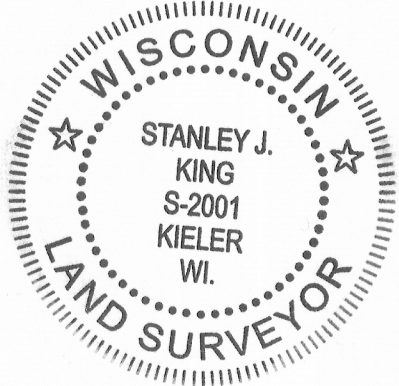
I, Stanley J. King, do hereby certify that the corner location on this record was determined by me and/ or under my direct supervision and that this U.S Public land survey monument record is correct and complete to the best of my knowledge and belief.

Dated this 19th day of January, 2016

Stanley J. King
Stanley J. King - Registered Land Surveyor S-2001



Seal:



HISTORY OF CORNER ESTABLISHMENT:

Corner was originally set by Lucius Lyon in 1832.
No other record of the corner was found.

CORNER OF CORNER EVIDENCE FOUND:

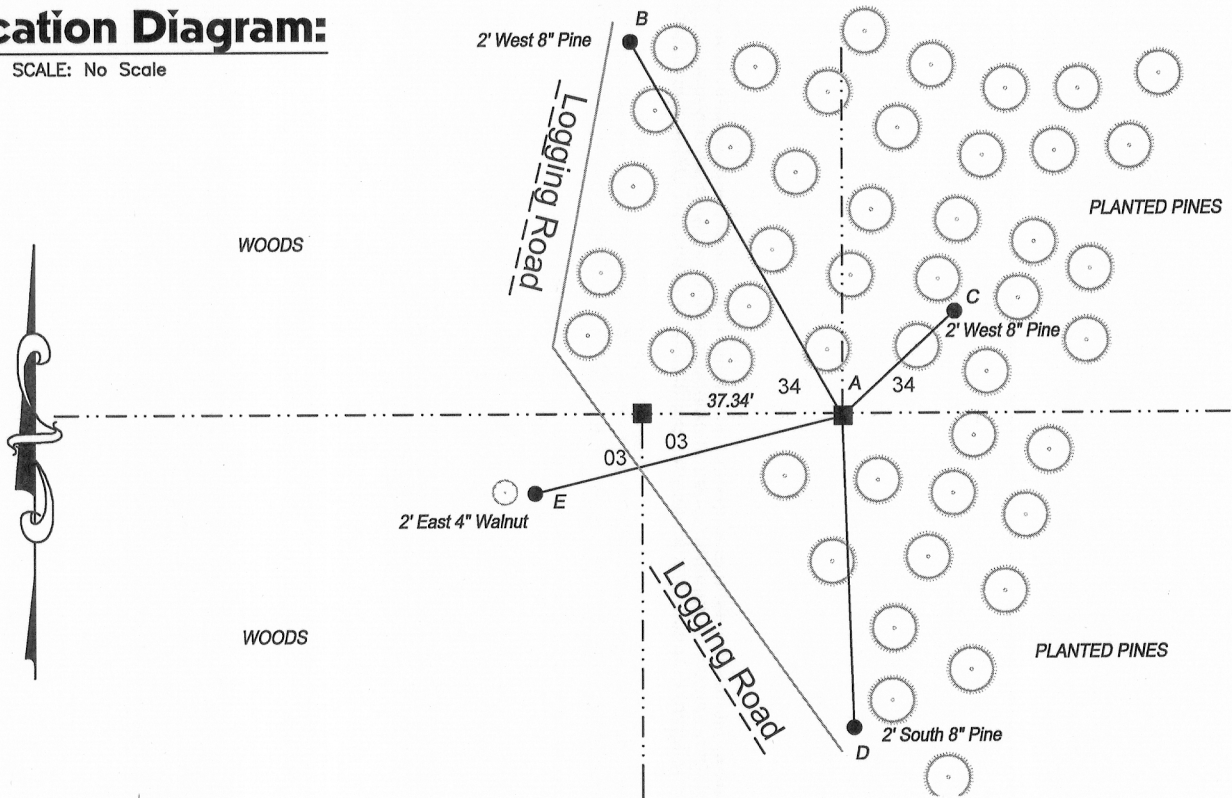
Found no evidence of the corner or its witness - I set the corner proportionate and online between the Southwest and Southeast corner of Section 3. Verified its location using GPS and EDM methods.

DESCRIPTION OF CORNER AND WITNESS MONUMENTS,

references and accessories used to perpetuate the original or re-established location of this corner.
Witnesses to the corner location Robert Sedgwick, and Jordan Wagner.

Location Diagram:

SCALE: No Scale



Tie Bar Table

Line:	Bearing:	Distance:
A-B	N 29°43'40" W	78.53'
A-C	N 47°51'40" E	27.91'
A-D	S 02°02'11" W	57.59'
A-E	S 75°40'25" W	58.51'

Legend

- Corner Location Set (#6X18" Rebar Set)
- Tie Bar Locations -
Set No. 6 x 18" rebar - wt = 1.50 #/l.f.
- - - Section Line/ 40 Line



**DELTA 3
ENGINEERING
INC.**

PROFESSIONAL CIVIL-MUNICIPAL & STRUCTURAL ENGINEERING-ARCHITECTURE
GRANT WRITING · LAND DEVELOPMENT · PLANNING & CADD SERVICES

875 SOUTH CHESTNUT STREET
PLATTEVILLE, WISCONSIN 53818

PHONE: (608) 348-5355
FAX: (608) 348-5455

DATE:
DRAWN BY: R. Sedgwick
APPROVED: S. King
SURVEY CREW: RWS, JW

Data: G:\Projects\2015\D15-183\CAD\D15-183\Barker POS.dwg
Drawing: G:\Projects\2015\D15-183\CAD\D15-183 Tiesheet.dwg

Grant County
Corner Number 126

JAN 22 2016

U.S PUBLIC LAND SURVEY MONUMENT RECORD - GRANT COUNTY, WI

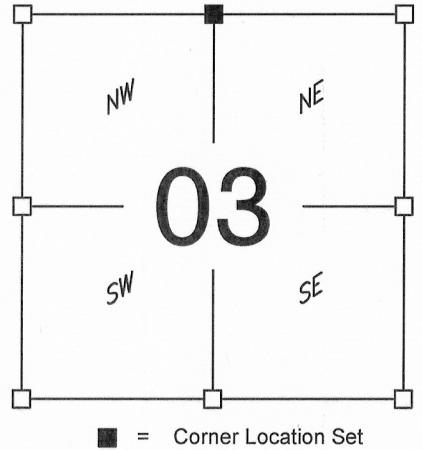
Section 03, Town 6 North, Range 5 West, Town of Millville

Certificate

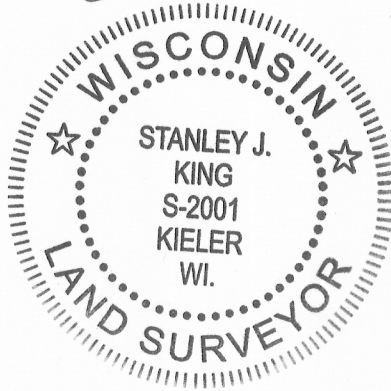
I, Stanley J. King, do hereby certify that the corner location on this record was determined by me and/ or under my direct supervision and that this U.S Public land survey monument record is correct and complete to the best of my knowledge and belief.

Dated this 19th day of January, 2016

Stanley J. King
Stanley J. King - Registered Land Surveyor S-2001



Seal:



HISTORY OF CORNER ESTABLISHMENT:

Corner was never originally set.
No other record of the corner was found.

CORNER OF CORNER EVIDENCE FOUND:

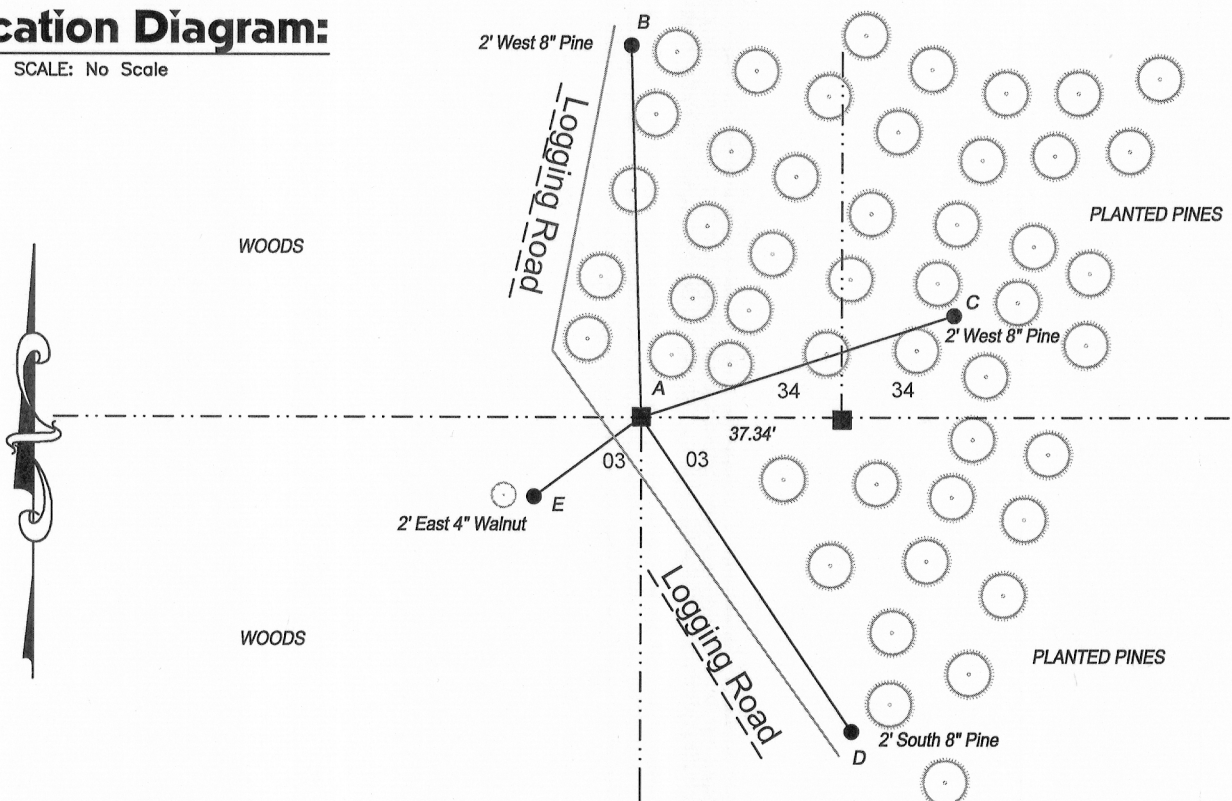
Found no evidence of the corner or its witness - I set the corner proportionate and online between the Northwest and Northeast corner of Section 3. Verified its location using GPS and EDM methods.

DESCRIPTION OF CORNER AND WITNESS MONUMENTS,

references and accessories used to perpetuate the original or re-established location of this corner.
Witnesses to the corner location Robert Sedgwick, and Jordan Wagner.

Location Diagram:

SCALE: No Scale



Tie Bar Table

Line:	Bearing:	Distance:
A-B	N 01°40'05" W	68.14'
A-C	N 72°05'06" E	60.59'
A-D	S 34°05'12" E	69.60'
A-E	S 53°33'52" W	24.52'

Legend

- Corner Location Set (#6X18" Rebar Set)
- Tie Bar Locations -
Set No. 6 x 18" rebar - wt = 1.50 #/l.f.
- Section Line/ 40 Line



DELTA 3
ENGINEERING

PROFESSIONAL CIVIL-MUNICIPAL & STRUCTURAL ENGINEERING-ARCHITECTURE
GRANT WRITING · LAND DEVELOPMENT · PLANNING & CADD SERVICES

875 SOUTH CHESTNUT STREET
PLATTEVILLE, WISCONSIN 53818

PHONE: (608) 348-5355
FAX: (608) 348-5455

DATE:
DRAWN BY: R. Sedgwick
APPROVED: S.King
SURVEY CREW: RWS,JW

Data: G:\Projects\2015\D15-183\CAD\D15-183\Barker POS.dwg
Drawing: G:\Projects\2015\D15-183\CAD\D15-183 Tiesheet.dwg

Grant County
Corner Number

06

JAN 22 2016