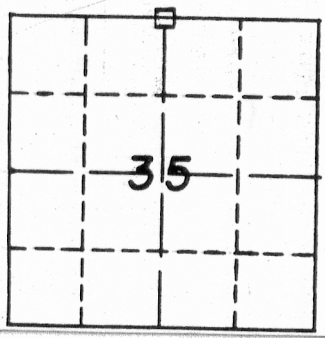


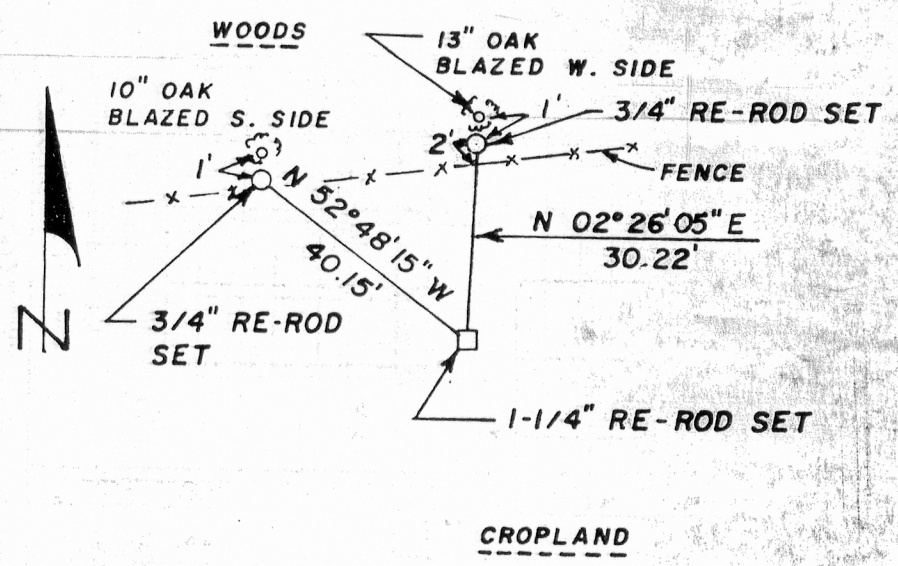
GOVERNMENT CORNER REFERENCE
Grant County, Wisconsin

Government corner 26 | 26
 35 | 35
 Township 7 North
 Range 5 West
 Date of survey 1/20/77
 Fieldbook _____



LOCATION SKETCH

This space for drawing of corner showing; type of Monument set, distance and direction of reference monument, a note if distances are not measured on a horizontal plane, and where measurement is taken on reference point.



NOTE
 BEARINGS ARE BASED ON MAGNETIC NORTH
 AS OBSERVED, 11/13/75

SURVEYORS AFFIDAVIT (Surveyor must certify the method by which the above described corner
 STATE OF WISCONSIN } *ss* has been located or relocated.)
 COUNTY OF GRANT }

I hereby certify that the North 1/4 corner of Section 35 was re-established by running horizontal control throughout Section 25, 26, 35 and 36, T7N, R5W and that said control contained the best available physical evidence and was correlated by computation with the original government survey notes to determine the position shown. I further certify that a 1 1/4 inch solid round iron stake was set and referenced as shown and that said iron will be replaced by a State of Wisconsin cast aluminum magnetized monument at the convenience of the Department of Natural Resources.

Harry M. Bredwell
 Registered Land Surveyor - Number S-516

CORNER NUMBER