

GRANT COUNTY CERTIFIED LAND CORNER

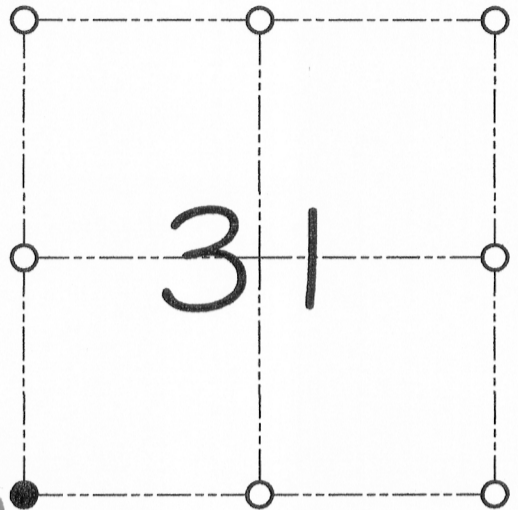
CORNER NUMBER 133

CERTIFICATE:

I, Larry L. Austin, do hereby certify that on the 14th day of June, 2000, I found evidence of the Southwest corner of Section 31, Town 7 North, Range 3 West, of the 4th Principal Meridian, and I re-established said corner according to the Wisconsin statutes as shown and described hereon.

Dated this 20th day of October, 2000

Larry L. Austin
Larry L. Austin S-1903



● = CORNER LOCATION

SOUTHWEST CORNER OF
SECTION 31, T 7 N R 3 W
TOWN OF MARION

HISTORY OF ORIGINAL CORNER ESTABLISHMENT:

Corner was originally set in 1832 by Sibley.
Barber tied to the corner in 1880.

DESCRIPTION OF CORNER EVIDENCE FOUND:

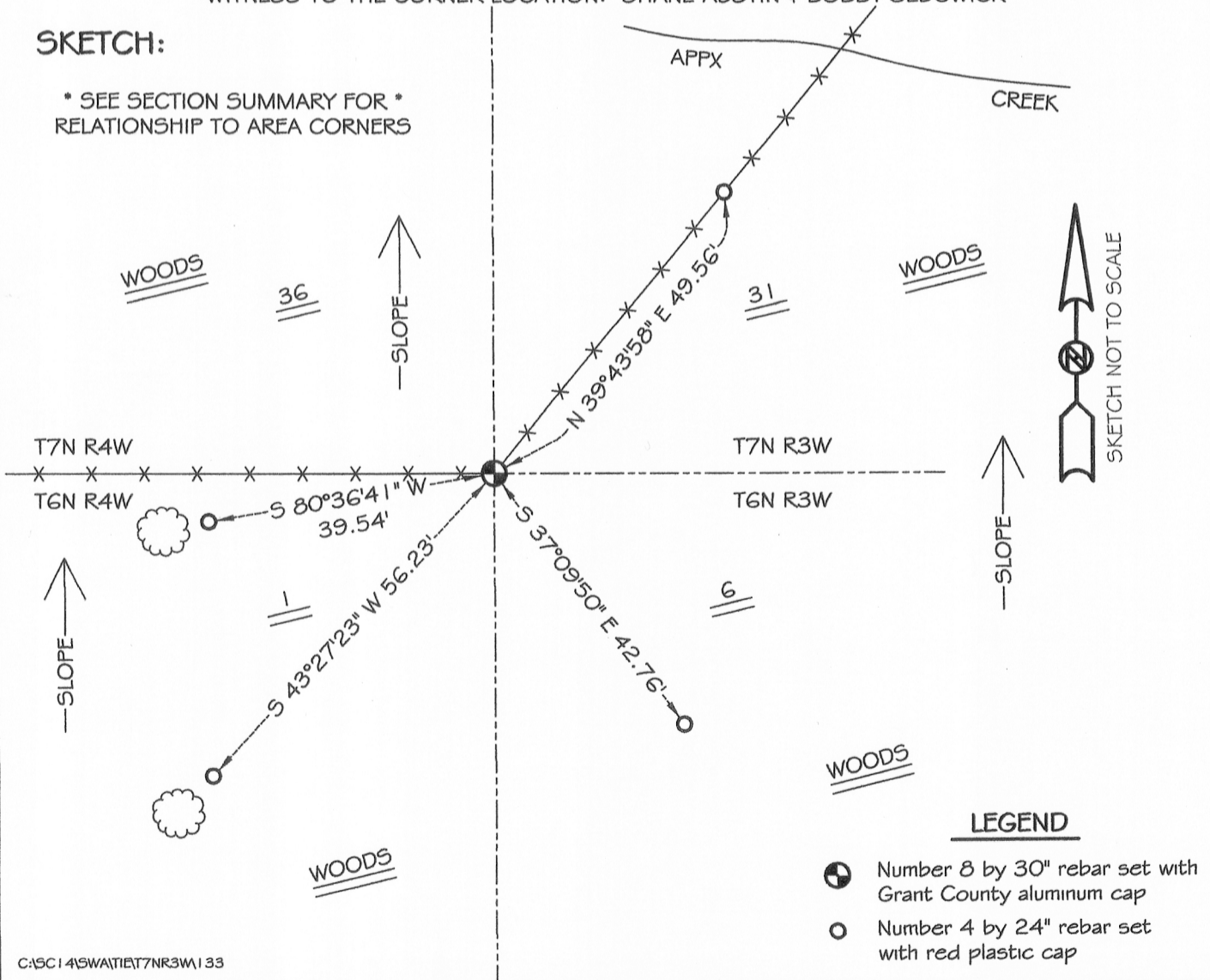
I found an occupied fence corner and accepted it's location after
an E.D.M. & G.P.S. traverse of the area.

DESCRIPTION OF CORNER AND WITNESS MONUMENTS, references and accessories used to perpetuate the original or re-established location of this corner

WITNESS TO THE CORNER LOCATION: SHANE AUSTIN & BOBBY SEDGWICK

SKETCH:

* SEE SECTION SUMMARY FOR *
RELATIONSHIP TO AREA CORNERS



LEGEND

- Number 8 by 30" rebar set with Grant County aluminum cap
- Number 4 by 24" rebar set with red plastic cap

C:\SC145\WAT\T7NR3W\133

APR 13 2014