

# GRANT COUNTY CERTIFIED LAND CORNER

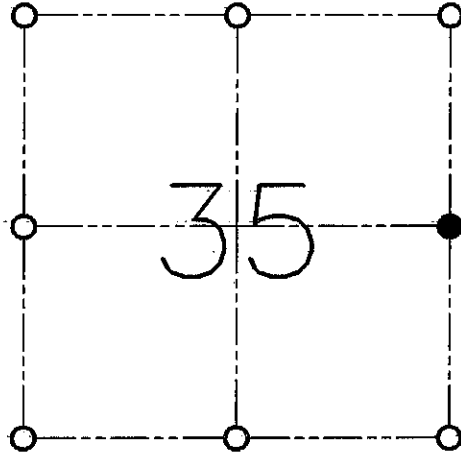
CORNER NO. 119

**CERTIFICATE:**

I, LARRY L. AUSTIN, DO HEREBY CERTIFY THAT ON TWENTY-FIRST DAY OF SEPTEMBER, 1998, I FOUND MONUMENTED EVIDENCE OF THE EAST 1/4 OF SECTION 35, TOWN 7 NORTH, RANGE 4 WEST, OF THE FOURTH PRINCIPAL MERIDIAN, AND I RE-ESTABLISHED SAID CORNER ACCORDING TO THE WISCONSIN STATUTES AS SHOWN AND DESCRIBED HEREON.

DATED THIS EIGHTH DAY OF JANUARY, 1999

*Larry L. Austin*  
LARRY L. AUSTIN S-1903



● = CORNER LOCATION

**EAST 1/4 OF SECTION 35  
T 7 N R 4 W  
TOWN OF WOODMAN**

**HISTORY OF ORIGINAL CORNER ESTABLISHMENT:**

CORNER SET IN 1833 BY HARVEY PARKE.

**DESCRIPTION OF CORNER EVIDENCE FOUND:**

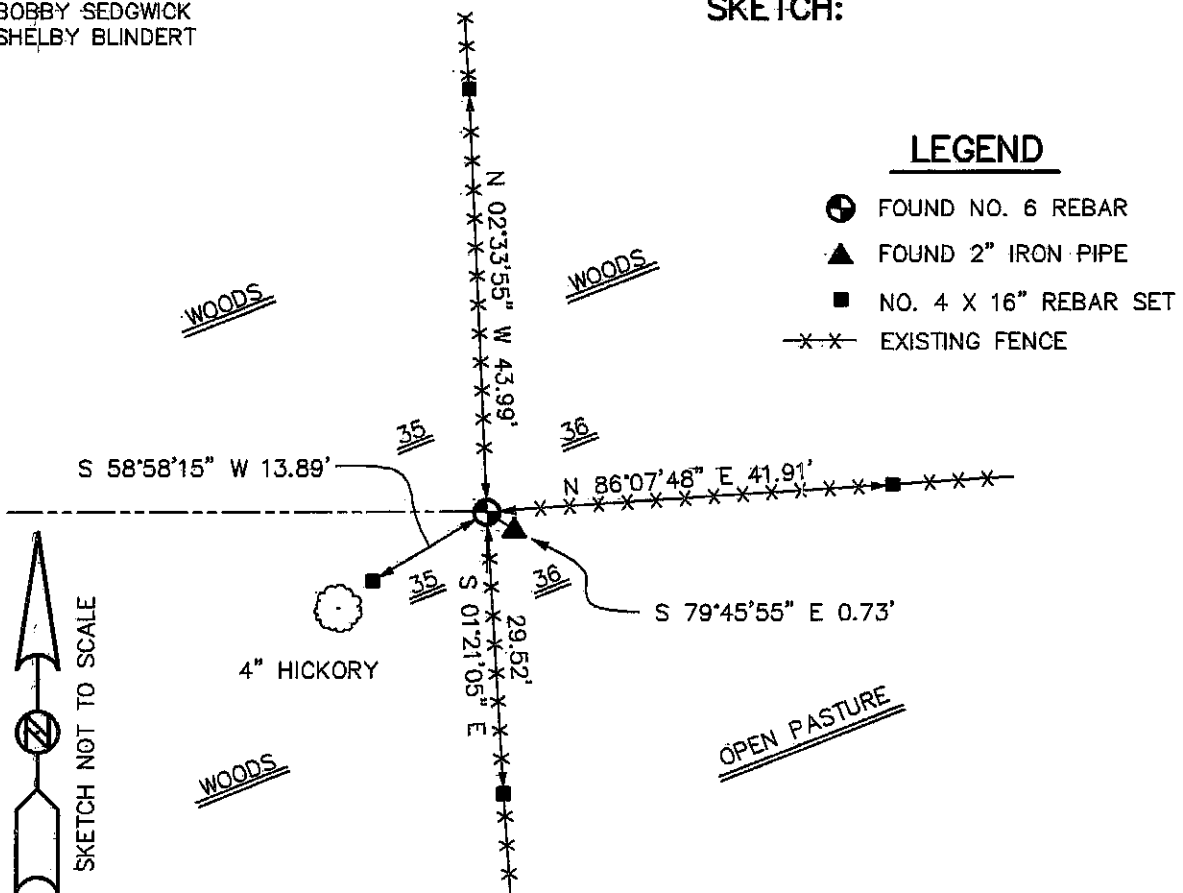
FOUND A 3/4" IRON BAR SET BY D. F. BURBACH. I ALSO FOUND A 2" IRON PIPE. I ACCEPTED THE 3/4" IRON BAR SET BY BURBACH AS A MONUMENT OF RECORD. VERIFIED THIS LOCATION USING E.D.M. AND G.P.S. METHODS.

**DESCRIPTION OF CORNER AND WITNESS MONUMENTS, REFERENCES AND ACCESSORIES USED TO PERPETUATE THE ORIGINAL OR RE-ESTABLISHED LOCATION OF THIS CORNER:**

**WITNESS TO THE CORNER LOCATION:**

BOBBY SEDGWICK  
SHELBY BLINDERT

**SKETCH:**



**LEGEND**

- FOUND NO. 6 REBAR
- ▲ FOUND 2" IRON PIPE
- NO. 4 X 16" REBAR SET
- x-x- EXISTING FENCE