

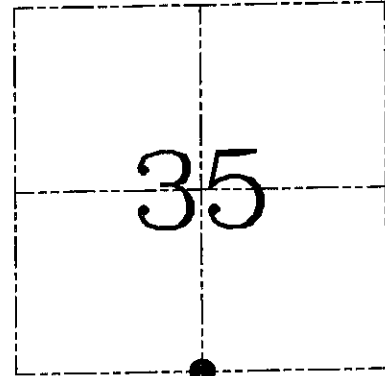
U.S. PUBLIC LAND SURVEY MONUMENT RECORD – GRANT COUNTY, WI
Section 35, Town 7 North Range 4 West, Town of Woodman

CERTIFICATE

I, Larry L. Austin, do hereby certify that the corner location on this record was determined by me and/or under my direct supervision and that this U.S. public land survey monument record is correct and complete to the best of my knowledge and belief.

Dated this 7th day of June, 2005

Larry L. Austin
 Larry L. Austin S-1903



● = CORNER LOCATION

HISTORY OF CORNER ESTABLISHMENT

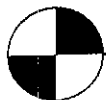
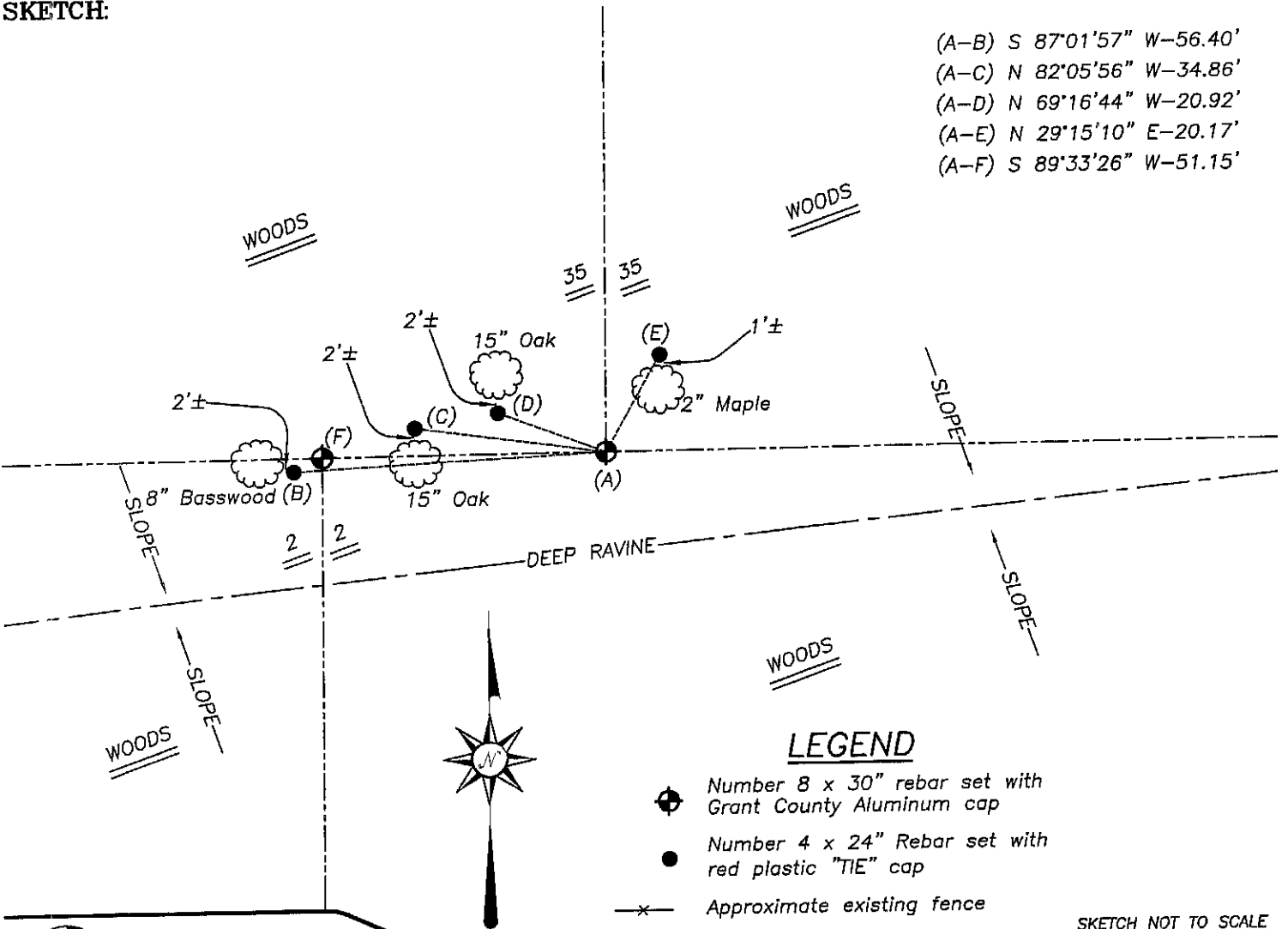
Corner was originally set in 1832 by Sibley.
 No other record of the corner was found.

DESCRIPTION OF CORNER EVIDENCE FOUND

I reset the corner proportionately and on-line between the Southeast and Southwest corners. Verified this location using EDM & GPS methods.

DESCRIPTION OF CORNER AND WITNESS MONUMENTS, references and accessories used to perpetuate the original or re-established location of this corner. Witnesses to corner location Bobby Sedgwick & Brad Digman & Shane Austin

SKETCH:



Austin Engineering LLC

4211 HWY 81 E, LANCASTER, WI 53813
 PHONE 608-723-6363 FAX 608-723-6702

JOB NUMBER 05S139
 FIELDBOOK: TDSR, 2511
 G:\T7NR4W\133
 H:\TIE\T7NR4W\124

DRAWN BY: BJ HAZEN
 APPROVED: LL AUSTIN


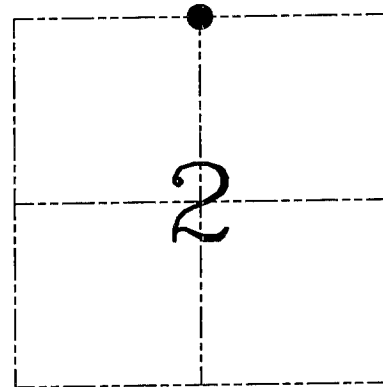
U.S. PUBLIC LAND SURVEY MONUMENT RECORD – GRANT COUNTY, WI
Section 2, Town 6 North Range 4 West, Town of Mount Hope

CERTIFICATE

I, Larry L. Austin, do hereby certify that the corner location on this record was determined by me and/or under my direct supervision and that this U.S. public land survey monument record is correct and complete to the best of my knowledge and belief.

Dated this 7th day of June, 2005

Larry L. Austin
 Larry L. Austin S-1903

● = CORNER LOCATION

HISTORY OF CORNER ESTABLISHMENT

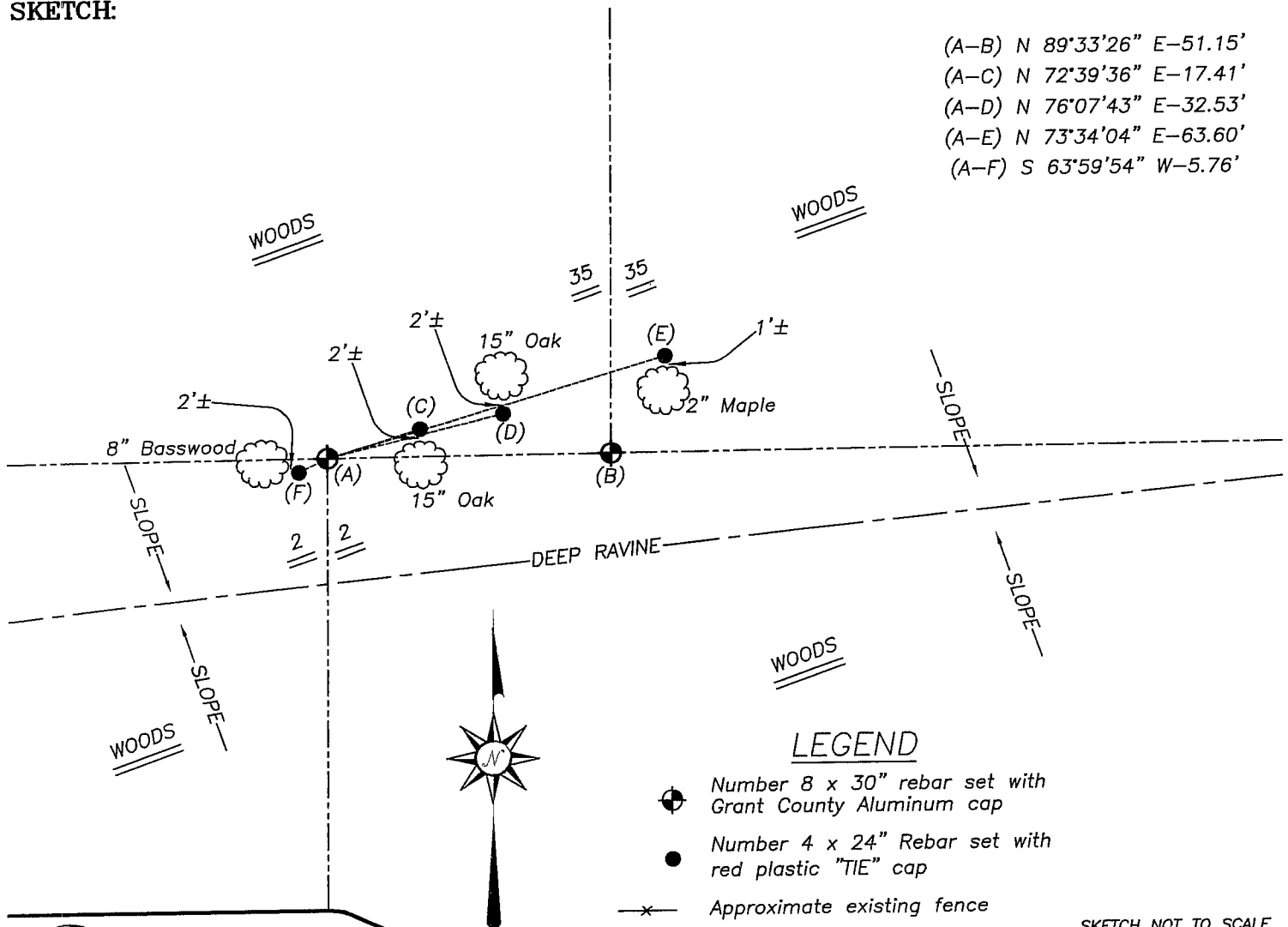
Corner was never originally set.
 No other record of the corner was found.

DESCRIPTION OF CORNER EVIDENCE FOUND

I set the corner proportionately and on-line between the South 1/4 and Southwest corners of Section 35, T7N R4W. Verified this location using EDM & GPS methods.

DESCRIPTION OF CORNER AND WITNESS MONUMENTS, references and accessories used to perpetuate the original or re-established location of this corner. Witnesses to corner location Bobby Sedgwick & Brad Digman & Shane Austin

SKETCH:



SKETCH NOT TO SCALE



Austin Engineering LLC

4211 HWY 81 E, LANCASTER, WI 53813
 PHONE 608-723-6363 FAX 608-723-6702

JOB NUMBER 05S139
 FIELDBOOK: TDSR, 2511
 G:\T7NR4W\133
 H:\TIE\T6NR4W\4

DRAWN BY: BJ HAZEN
 APPROVED: LL AUSTIN