

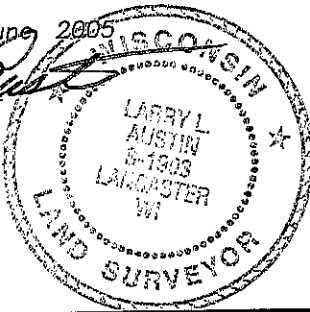
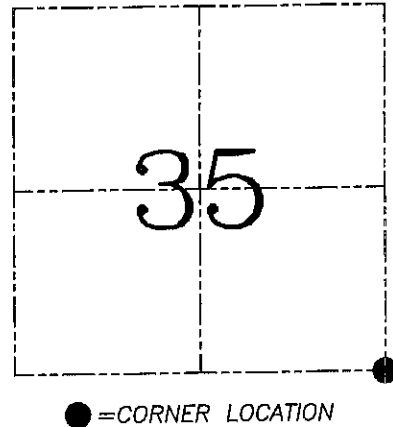
U.S. PUBLIC LAND SURVEY MONUMENT RECORD – GRANT COUNTY, WI
Section 35, Town 7 North Range 4 West, Town of Woodman

CERTIFICATE

I, Larry L. Austin, do hereby certify that the corner location on this record was determined by me and/or under my direct supervision and that this U.S. public land survey monument record is correct and complete to the best of my knowledge and belief.

Dated this 7th day of June, 2005

Larry L. Austin
 Larry L. Austin S-1903

HISTORY OF CORNER ESTABLISHMENT

Corner was originally set in 1832 by Sibley.
 No other record of the corner was found.

DESCRIPTION OF CORNER EVIDENCE FOUND

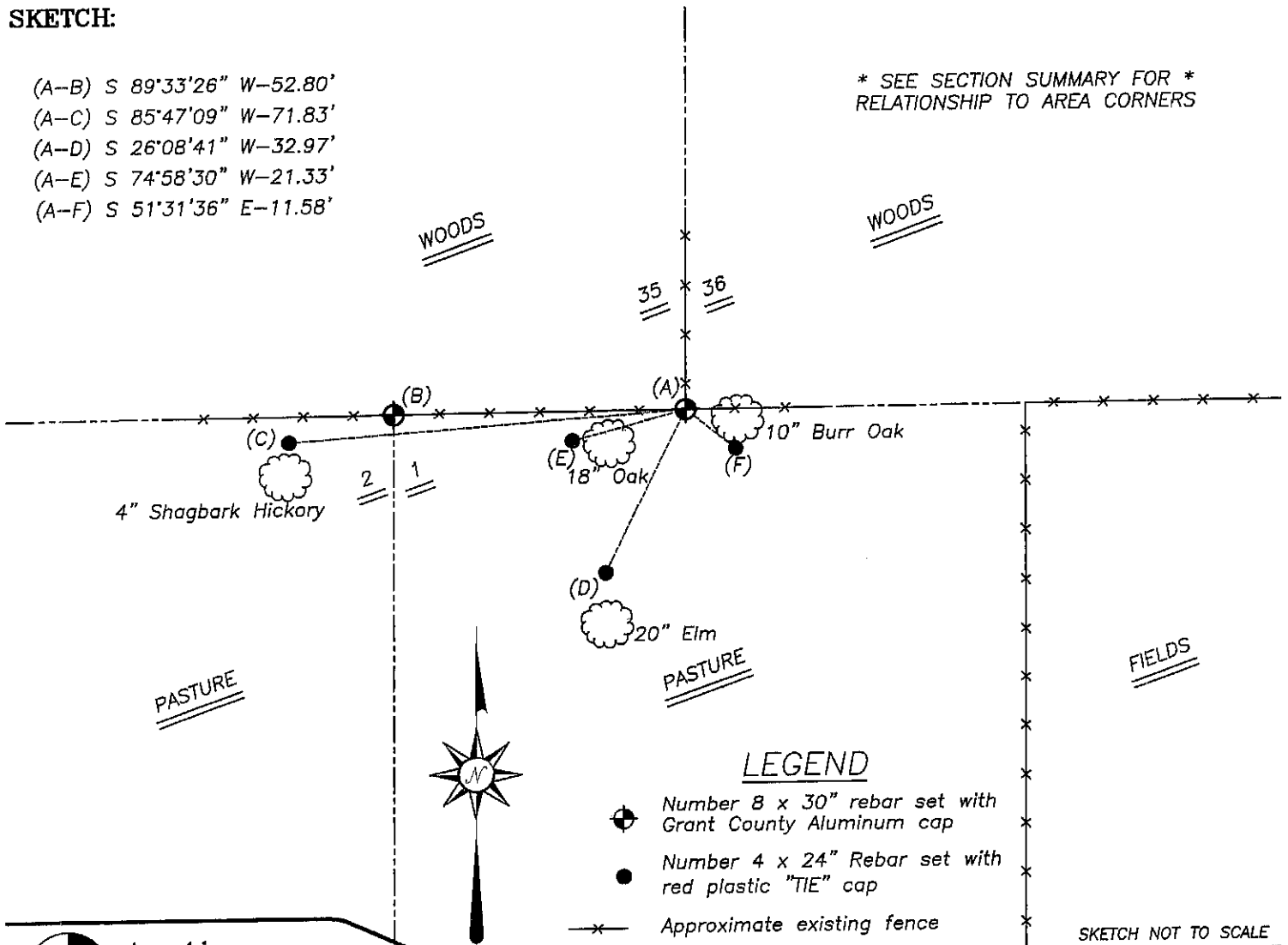
I reset the corner at an occupied location. This location fit the projection of the East line of the NE 1/4. Verified this location using EDM & GPS methods.

DESCRIPTION OF CORNER AND WITNESS MONUMENTS, references and accessories used to perpetuate the original or re-established location of this corner. Witnesses to corner location Bobby Sedgwick & Brad Digman & Shane Austin

SKETCH:

- (A-B) S 89°33'26" W-52.80'
- (A-C) S 85°47'09" W-71.83'
- (A-D) S 26°08'41" W-32.97'
- (A-E) S 74°58'30" W-21.33'
- (A-F) S 51°31'36" E-11.58'

* SEE SECTION SUMMARY FOR *
 RELATIONSHIP TO AREA CORNERS



Austin Engineering LLC
 4211 HWY 81 E, LANCASTER, WI 53813
 PHONE 608-723-6363 FAX 608-723-6702

JOB NUMBER 05S139
 FIELDBOOK: TDSR, 2511
 G:\T7NR4W\133
 H:\TIE\T7NR4W\123

DRAWN BY: BJ HAZEN
 APPROVED: LL AUSTIN

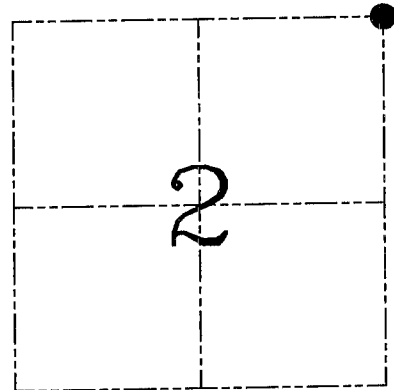
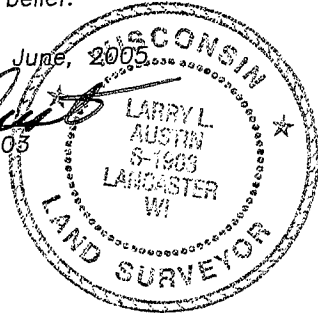
U.S. PUBLIC LAND SURVEY MONUMENT RECORD – GRANT COUNTY, WI
Section 2, Town 6 North Range 4 West, Town of Mount Hope

CERTIFICATE

I, Larry L. Austin, do hereby certify that the corner location on this record was determined by me and/or under my direct supervision and that this U.S. public land survey monument record is correct and complete to the best of my knowledge and belief.

Dated this 7th day of June, 2005

Larry L. Austin
 Larry L. Austin S-1903



● = CORNER LOCATION

HISTORY OF CORNER ESTABLISHMENT

Corner was originally set in 1833 by Parke.
 No other record of the corner was found.

DESCRIPTION OF CORNER EVIDENCE FOUND

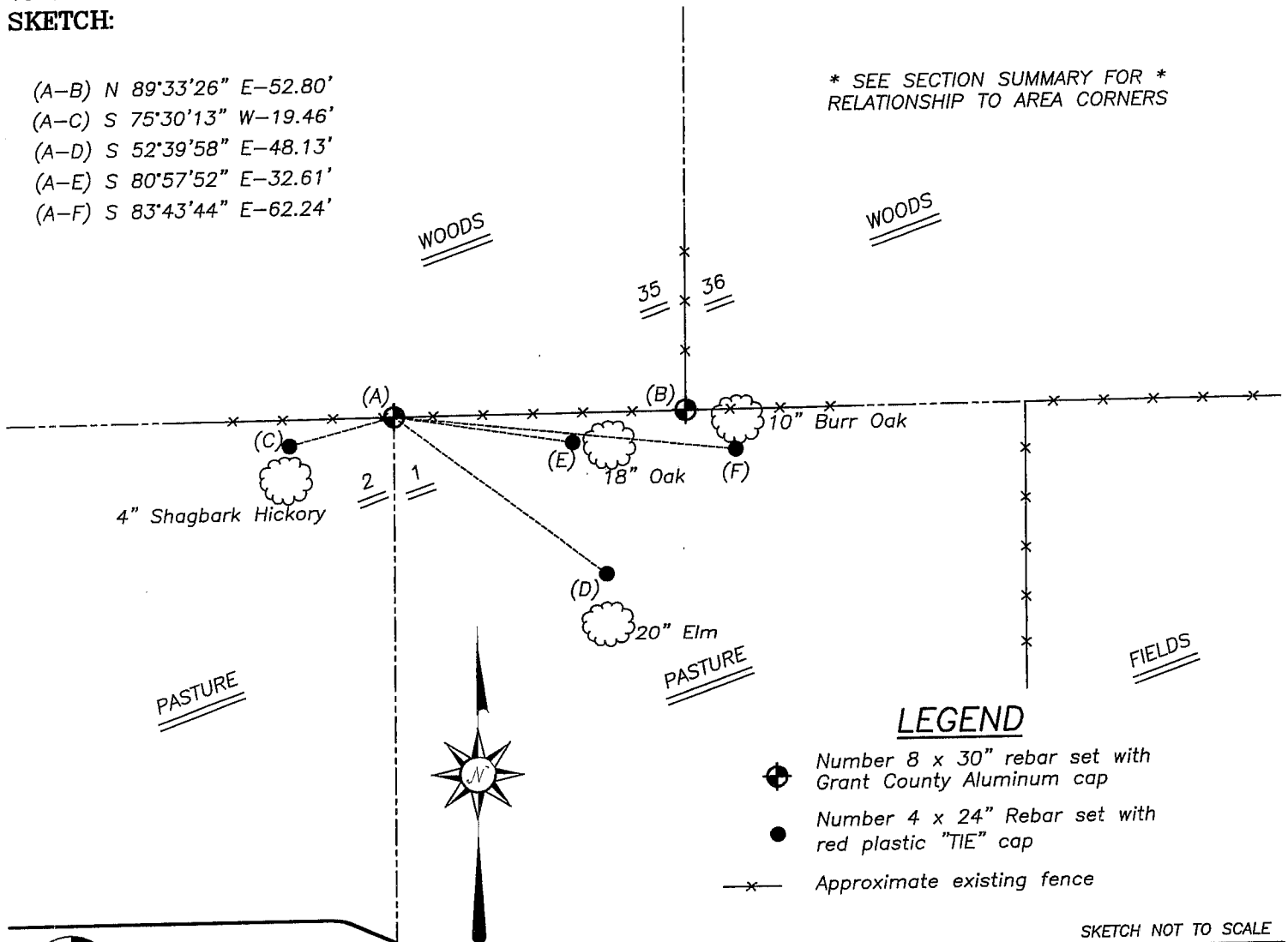
I reset the corner at the recorded offset from the Southwest corner of Section 35.
 Verified this location using EDM & GPS methods.

DESCRIPTION OF CORNER AND WITNESS MONUMENTS, references and accessories used to perpetuate the original or re-established location of this corner. Witnesses to corner location Bobby Sedgwick & Brad Digman & Shane Austin

SKETCH:

- (A-B) N 89°33'26" E-52.80'
- (A-C) S 75°30'13" W-19.46'
- (A-D) S 52°39'58" E-48.13'
- (A-E) S 80°57'52" E-32.61'
- (A-F) S 83°43'44" E-62.24'

* SEE SECTION SUMMARY FOR *
 RELATIONSHIP TO AREA CORNERS



LEGEND

- Number 8 x 30" rebar set with Grant County Aluminum cap
- Number 4 x 24" Rebar set with red plastic "TIE" cap
- x— Approximate existing fence

SKETCH NOT TO SCALE



Austin Engineering LLC

4211 HWY 81 E, LANCASTER, WI 53813
 PHONE 608-723-6363 FAX 608-723-6702

JOB NUMBER 05S139
 FIELDBOOK: TDSR, 2511
 G:\T7NR4W\133
 H:\TIE\T6NR4W\3

DRAWN BY: BJ HAZEN
 APPROVED: LL AUSTIN