

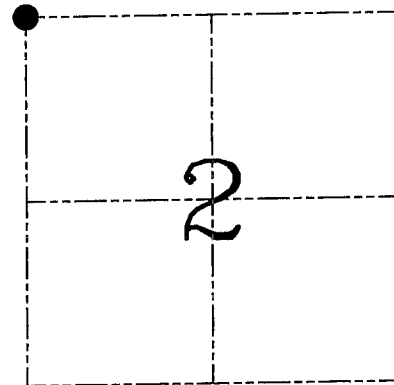
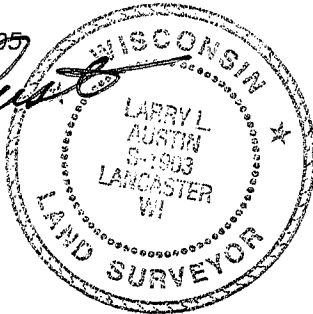
U.S. PUBLIC LAND SURVEY MONUMENT RECORD – GRANT COUNTY, WI
Section 2, Town 6 North Range 4 West, Town of Mount Hope

CERTIFICATE

I, Larry L. Austin, do hereby certify that the corner location on this record was determined by me and/or under my direct supervision and that this U.S. public land survey monument record is correct and complete to the best of my knowledge and belief.

Dated this 7th day of June, 2005

Larry L. Austin
 Larry L. Austin S-1903



● = CORNER LOCATION

HISTORY OF CORNER ESTABLISHMENT

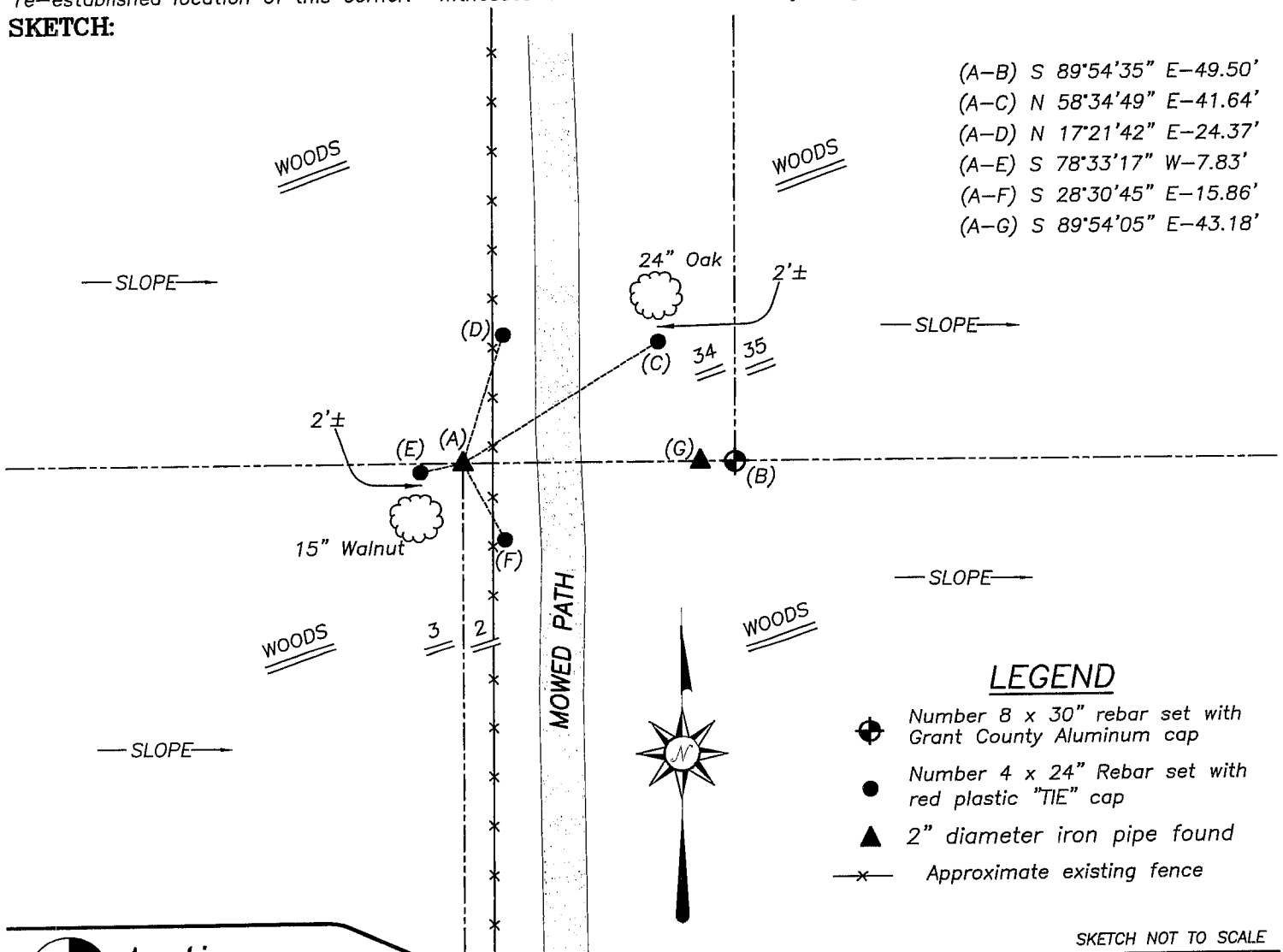
Corner was originally set in 1833 by Parke. In 1978 Lampman set a 2" iron pipe. No other record of the corner was found.

DESCRIPTION OF CORNER EVIDENCE FOUND

I found the 2" iron pipe and accepted it's location after an EDM & GPS traverse of the area.

DESCRIPTION OF CORNER AND WITNESS MONUMENTS, references and accessories used to perpetuate the original or re-established location of this corner. Witnesses to corner location Bobby Sedgwick & Brad Digman & Shane Austin

SKETCH:



- (A-B) S 89°54'35" E-49.50'
- (A-C) N 58°34'49" E-41.64'
- (A-D) N 17°21'42" E-24.37'
- (A-E) S 78°33'17" W-7.83'
- (A-F) S 28°30'45" E-15.86'
- (A-G) S 89°54'05" E-43.18'

LEGEND

- ⊕ Number 8 x 30" rebar set with Grant County Aluminum cap
- Number 4 x 24" Rebar set with red plastic "TIE" cap
- ▲ 2" diameter iron pipe found
- × Approximate existing fence

SKETCH NOT TO SCALE

Austin Engineering LLC
 4211 HWY 81 E, LANCASTER, WI 53813
 PHONE 608-723-6363 FAX 608-723-6702

JOB NUMBER 05S139
 FIELDBOOK: TDSR, 2511
 G:\T7NR4W\133
 H:\TIE\T6NR4W\5

DRAWN BY: BJ HAZEN
 APPROVED: LL AUSTIN

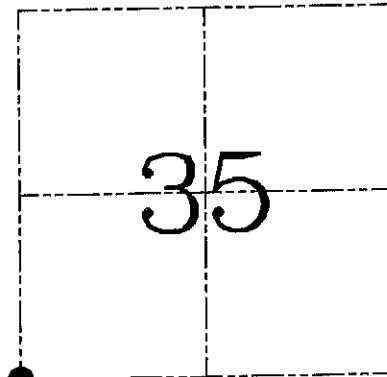
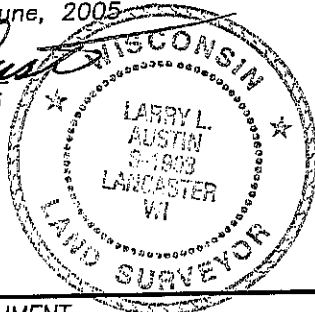
U.S. PUBLIC LAND SURVEY MONUMENT RECORD – GRANT COUNTY, WI
Section 35, Town 7 North Range 4 West, Town of Woodman

CERTIFICATE

I, Larry L. Austin, do hereby certify that the corner location on this record was determined by me and/or under my direct supervision and that this U.S. public land survey monument record is correct and complete to the best of my knowledge and belief.

Dated this 7th day of June, 2005

Larry L. Austin
 Larry L. Austin S-1903



● = CORNER LOCATION

HISTORY OF CORNER ESTABLISHMENT

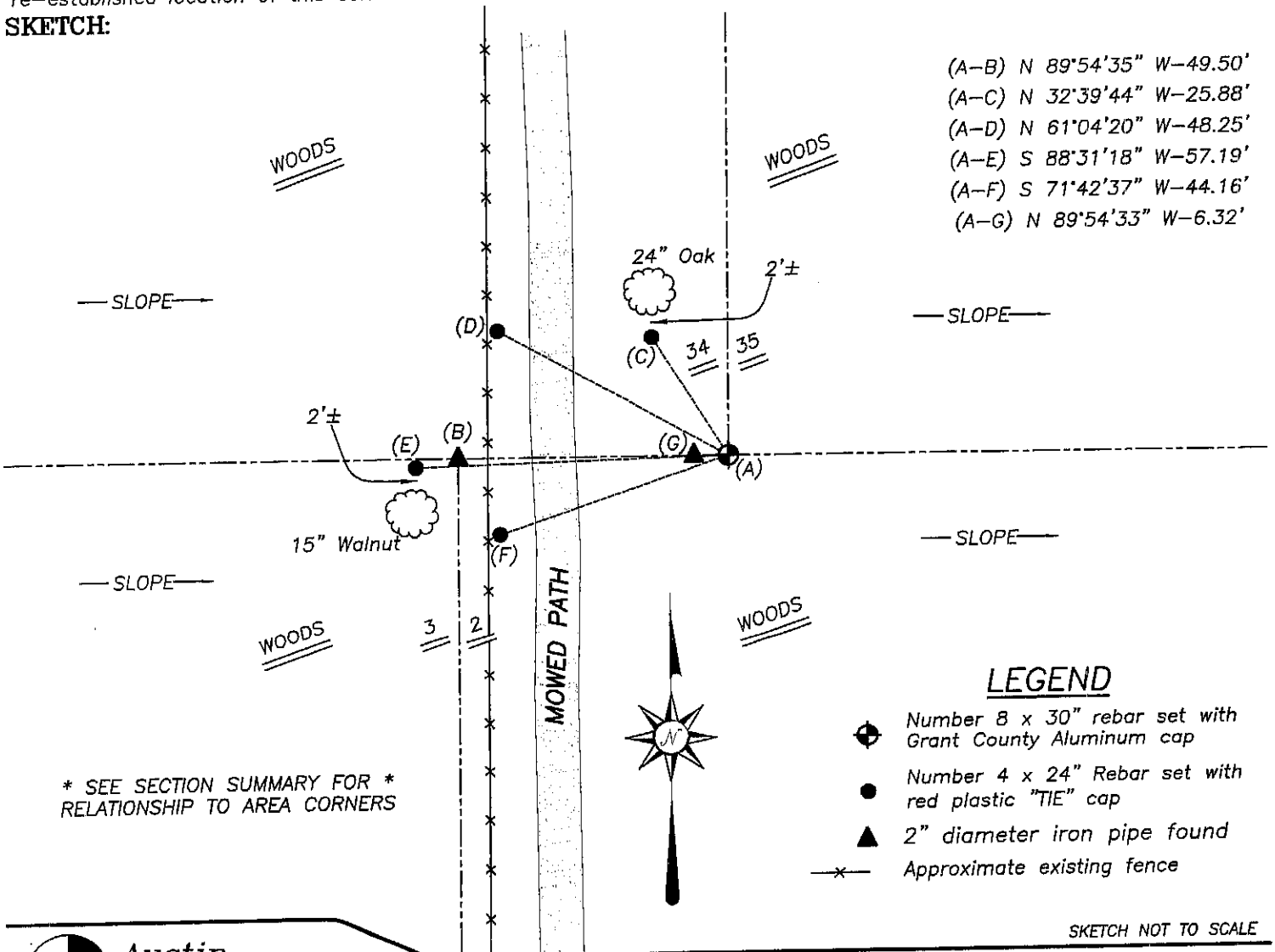
Corner was originally set in 1832 by Sibley. In 1979 Lampman set a 2" iron pipe at this location. No other record of the corner was found.

DESCRIPTION OF CORNER EVIDENCE FOUND

I found the 2" iron pipe and did not accept it's location. I reset the corner at the recorded offset from the existing Northwest corner of Section 2. Verified this location using EDM & GPS methods.

DESCRIPTION OF CORNER AND WITNESS MONUMENTS, references and accessories used to perpetuate the original or re-established location of this corner. Witnesses to corner location Bobby Sedgwick & Brad Digman & Shane Austin

SKETCH:



* SEE SECTION SUMMARY FOR *
 RELATIONSHIP TO AREA CORNERS

LEGEND

- Number 8 x 30" rebar set with Grant County Aluminum cap
- Number 4 x 24" Rebar set with red plastic "TIE" cap
- ▲ 2" diameter iron pipe found
- ✕ Approximate existing fence

SKETCH NOT TO SCALE



Austin Engineering LLC

4211 HWY 81 E, LANCASTER, WI 53813
 PHONE 608-723-6363 FAX 608-723-6702

JOB NUMBER 05S139
 FIELDBOOK: TDSR, 2511
 G:\T7NR4W\133
 H:\TIE\T7NR4W\125

DRAWN BY: BJ HAZEN
 APPROVED: LL AUSTIN