

U.S. PUBLIC LAND SURVEY MONUMENT RECORD - GRANT COUNTY, WI

Section 34, Town 7 North Range 4 West, Town of Woodman (a)

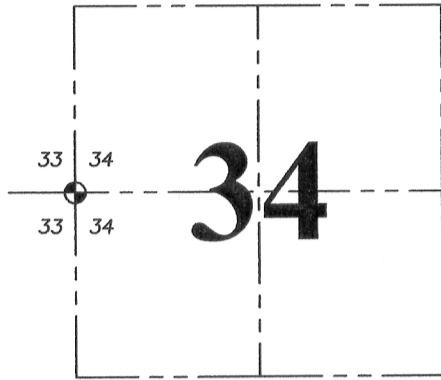
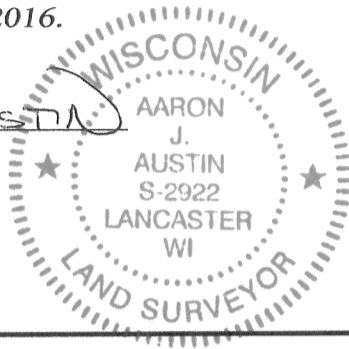
NOTE: This form is intended and designed to fulfill all requirements of the Wisconsin Administrative Cod. Chapter A-E 7.08, U.S. Public Land Survey Monument Record (3) (a) (b) (c) (d) (e) (f) (g) (h) (i). An additional sheet may be added if necessary to conform with said requirements.

CERTIFICATE: (i)

I, Aaron J. Austin, Wisconsin Professional Land Surveyor, do hereby certify that the corner location on this record was determined by me and/or under my direct supervision and that this U.S. Public Land Survey Monument Record is correct and complete to the best of my knowledge and belief.

Dated this 8th day of June, 2016.

Aaron J. Austin
 Aaron J. Austin, S-2922



⊙ = CORNER LOCATION

Grant County Coordinates
 NAD 83 (2011) WISCORS
 Northing: 593,476.72
 Easting: 783,290.51

HISTORY OF CORNER ESTABLISHMENT:

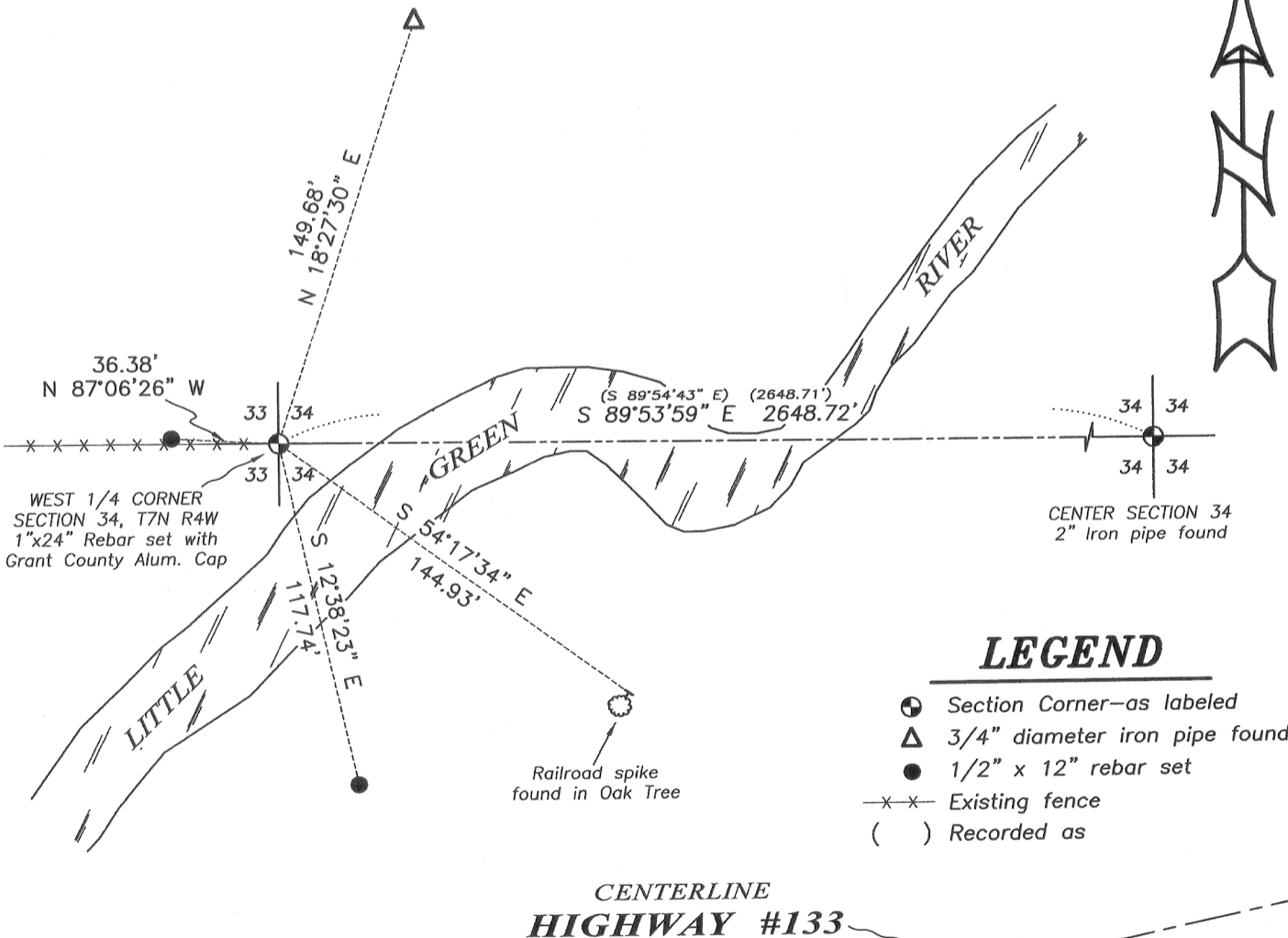
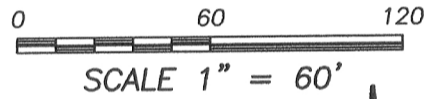
1833-Harvey Parke set the original corner.
 1979-Robert Lampman reset the corner on a Survey filed in Book 7, Page 24.
 1998-Talarczyk found Lampman's corner and prepared a U.S. Public Land Survey Monument Record for the corner.

DESCRIPTION OF CORNER EVIDENCE FOUND: (b) (f) (g) (h)

The monument could not be recovered. I reset the corner from 2 found witness corners and set two additional witness corners after I verified its location with E.D.M. and G.P.S. methods.

DESCRIPTION OF CORNER AND WITNESS MONUMENTS, references and accessories used to perpetuate the original or re-established location of this corner. (c) (d) (e) Witnesses to corner location Shane Austin.

SKETCH:



LEGEND

- ⊙ Section Corner—as labeled
- △ 3/4" diameter iron pipe found
- 1/2" x 12" rebar set
- x-x- Existing fence
- () Recorded as

(e) Describe any material discrepancy between the location of the corner as restored or reestablished and the location of that corner as previously restored or reestablished by distance and direction. Show the discrepancy on the plan view drawing under (d), above. Show the distances between the corner as previously restored or reestablished and (1) the corner as restored or reestablished, and (2) to at least 2 of the witness monuments shown on the drawing in (d), above.

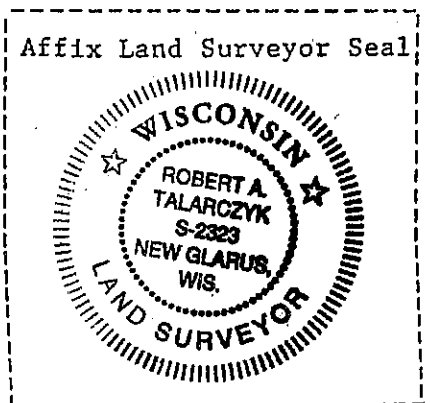
None

(f) Was the corner restored through acceptance of (1) an obliterated evidence location, or, (2) a found perpetuated location?

A found perpetuated location.

(g&h) Was the corner reestablished through lost corner proportionate methods? If so, show the method, including the directions and distances to other public land survey corners used as evidence or used for proportioning in determining the corner location?

No



(i) I, Robert A. Talarczyk
(type or print name) certify that the corner location shown on this record was determined by me or under my direction and control and that this U.S. Public Land Survey Monument Record is correct and complete to the best of my knowledge and belief.

Robert A. Talarczyk 01/19/98
Date