

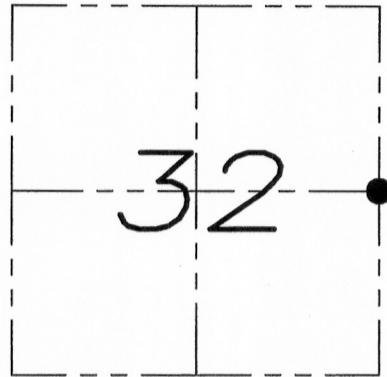
# U.S. PUBLIC LAND SURVEY MONUMENT RECORD

Section 32, Town 7 North Range 4 West, Town of Woodman, Grant County, Wisconsin

CERTIFICATE

I, Larry L. Austin, do hereby certify that the corner location on this record was determined by me and/or under my direct supervision and that this U.S. public land survey monument record is correct and complete to the best of my knowledge and belief.

*Larry L. Austin*  
 Larry L. Austin, S-1903



● = CORNER LOCATION

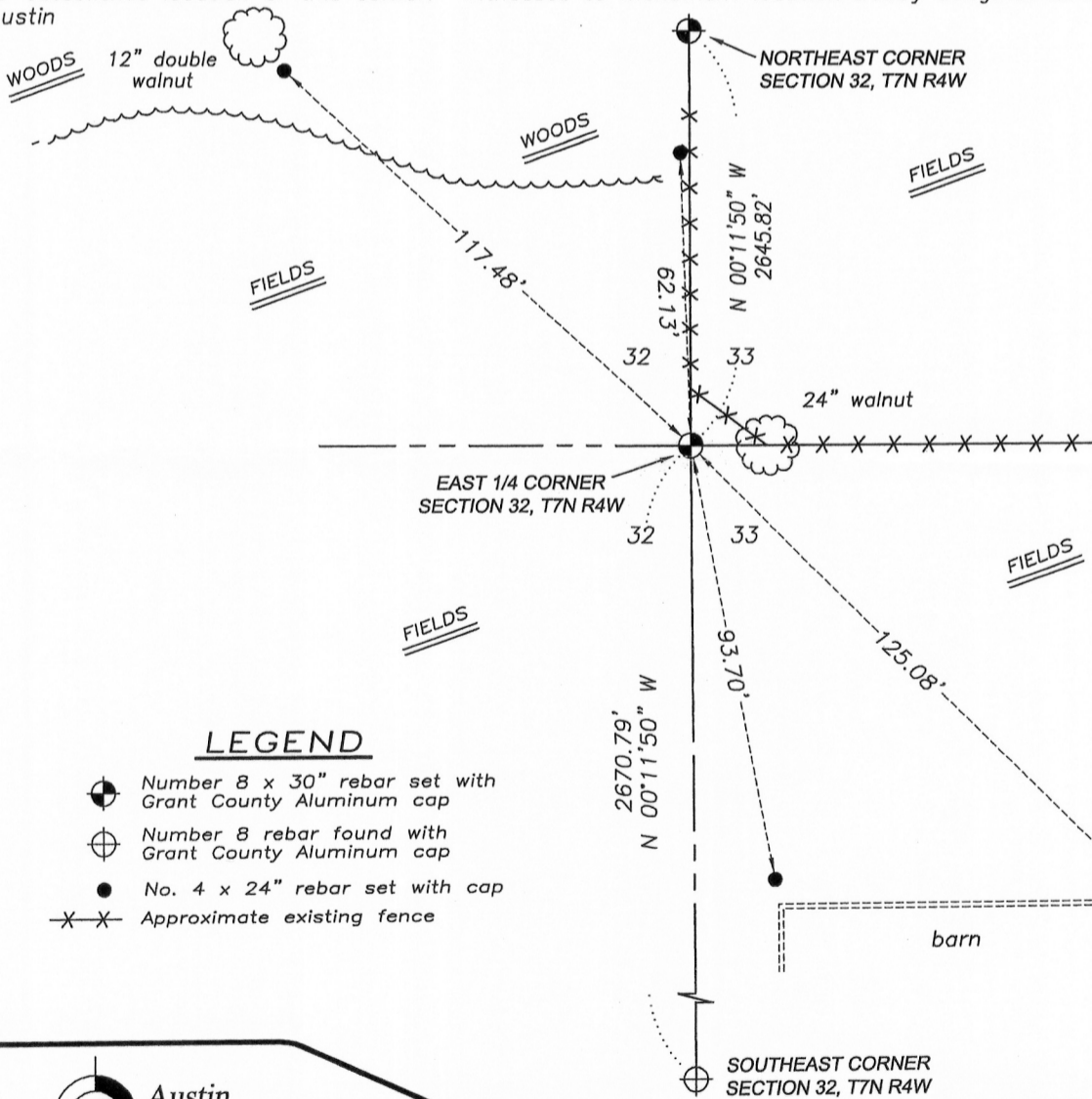
HISTORY OF CORNER

Corner was originally set in 1833 by Hervey Parke. No other record of the corner was found.

CORNER EVIDENCE FOUND

I was unable to locate any evidence of the original corner. I reset the corner based upon a straight line between the Northeast and Southeast corners of Section 32 and intersected it with the fence to the East. This fit well with the existing fence to the North. I verified this corner location by E.D.M. and G.P.S. methods.

DESCRIPTION OF CORNER AND WITNESS MONUMENTS, references and accessories used to perpetuate the original or re-established location of this corner. Witnesses to monument location Bobby Sedgwick & Brad Digman & Shane Austin



LEGEND

- Number 8 x 30" rebar set with Grant County Aluminum cap
- ⊕ Number 8 rebar found with Grant County Aluminum cap
- No. 4 x 24" rebar set with cap
- X-X- Approximate existing fence

NOT TO SCALE

**Austin Engineering LLC**  
 austinengineeringllc.com  
 4211 HWY 81 E, LANCASTER, WI 53813  
 PHONE: 608-723-6363 FAX: 608-723-6702

JOB NUMBER WACHTER  
 FIELDBOOK: TDSR, 9801  
 G:\T7NR4W\32A  
 H:\TIE\T7NR4W\95

DRAWN BY: SW AUSTIN  
 APPROVED: LL AUSTIN