

GRANT COUNTY CERTIFIED LAND CORNER

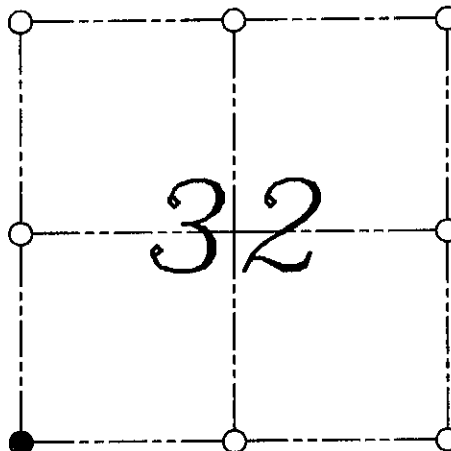
CORNER NUMBER 133

CERTIFICATE:

I, LARRY L. AUSTIN, DO HEREBY CERTIFY THAT ON NINTH DAY OF SEPTEMBER, 1999, I FOUND NO EVIDENCE OF THE SOUTHWEST CORNER OF SECTION 31, TOWN 7 NORTH, RANGE 4 WEST, OF THE FOURTH PRINCIPAL MERIDIAN, AND I RE-ESTABLISHED SAID CORNER ACCORDING TO THE WISCONSIN STATUTES AS SHOWN AND DESCRIBED HEREON.

DATED THIS TENTH DAY OF SEPTEMBER, 1999

Larry L. Austin
LARRY L. AUSTIN S-1903



● = CORNER LOCATION
SOUTHWEST CORNER OF SECTION 32, T 7 N R 4 W TOWN OF WOODMAN

HISTORY OF ORIGINAL CORNER ESTABLISHMENT:

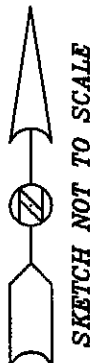
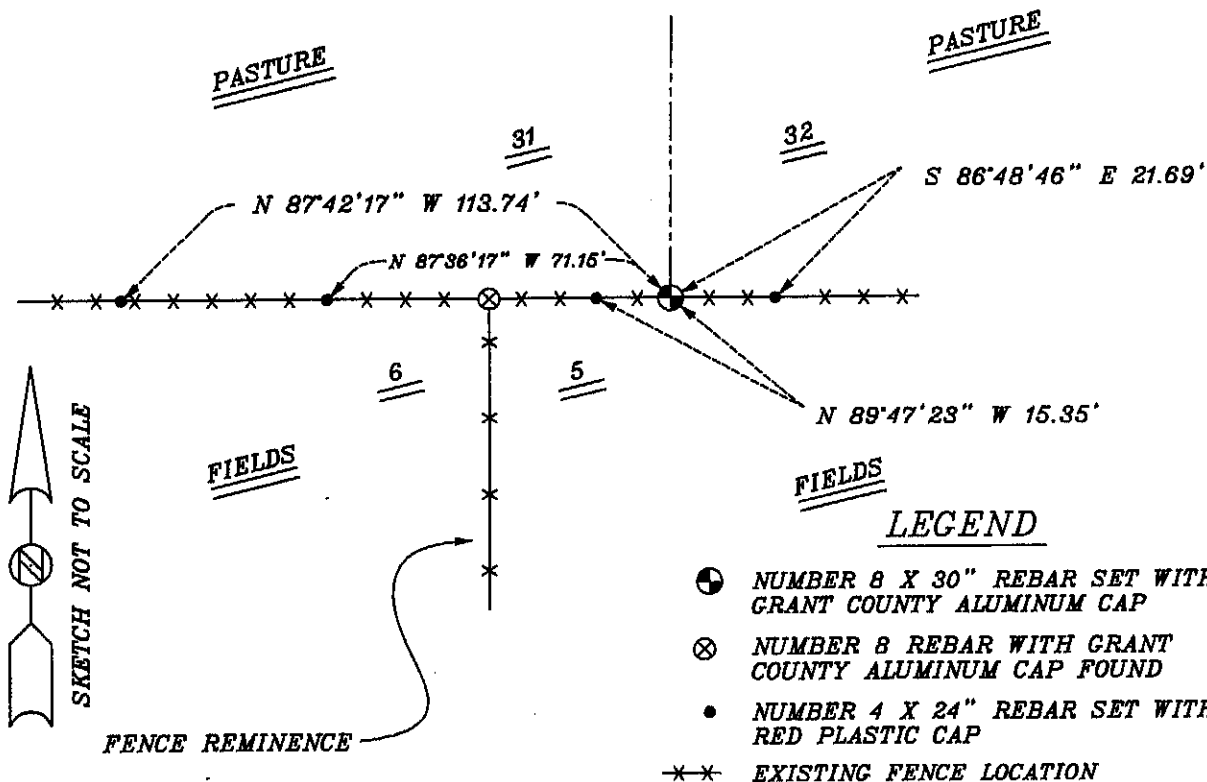
CORNER WAS SET IN 1832 BY SIBLEY.
NO OTHER RECORDS WERE FOUND.

DESCRIPTION OF CORNER EVIDENCE FOUND:

I FOUND NO EVIDENCE OF THE CORNER.
I SET THE CORNER BASED ON THE MONUMENTED EVIDENCE OF THE NORTHEAST CORNER OF SECTION 6. VERIFIED THIS LOCATION USING E.D.M. AND G.P.S. METHODS.

DESCRIPTION OF CORNER AND WITNESS MONUMENTS, REFERENCES AND ACCESSORIES USED TO PERPETUATE THE ORIGINAL OR RE-ESTABLISHED LOCATION OF THIS CORNER:
WITNESS TO THE CORNER LOCATION: BOBBY SEDGWICK ; SHELBY BLINDERT

SKETCH:



FENCE REMINENCE

LEGEND

- NUMBER 8 X 30" REBAR SET WITH GRANT COUNTY ALUMINUM CAP
- ⊗ NUMBER 8 REBAR WITH GRANT COUNTY ALUMINUM CAP FOUND
- NUMBER 4 X 24" REBAR SET WITH RED PLASTIC CAP
- *—* EXISTING FENCE LOCATION

GRANT COUNTY CERTIFIED LAND CORNER

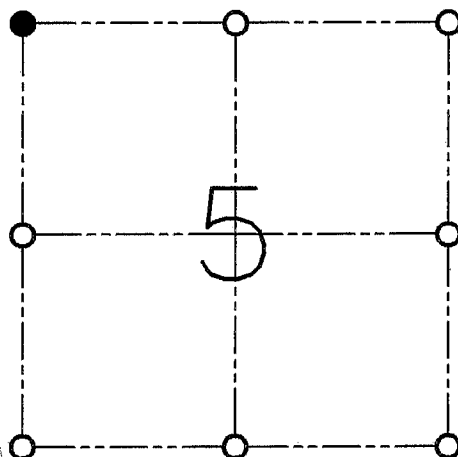
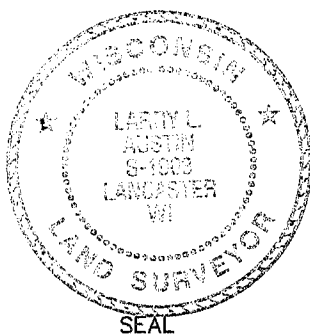
CORNER NO. 11

CERTIFICATE:

I, LARRY L. AUSTIN, DO HEREBY CERTIFY THAT ON TWELFTH OF JANUARY, 1999, I FOUND OCCUPATIONAL EVIDENCE OF THE NORTHWEST CORNER OF SECTION 5, TOWN 6 NORTH, RANGE 4 WEST, OF THE FOURTH PRINCIPAL MERIDIAN, AND I RE-ESTABLISHED SAID CORNER ACCORDING TO THE WISCONSIN STATUTES AS SHOWN AND DESCRIBED HEREON.

DATED THIS EIGHTEENTH DAY OF JANUARY, 1999

Larry L. Austin
LARRY L. AUSTIN S-1903



● = CORNER LOCATION

**NORTHWEST CORNER SECTION 5
T 6 N R 4 W
TOWN OF WOODMAN**

HISTORY OF ORIGINAL CORNER ESTABLISHMENT:

CORNER WAS SET IN 1833 BY HARVEY PARKE.

DESCRIPTION OF CORNER EVIDENCE FOUND:

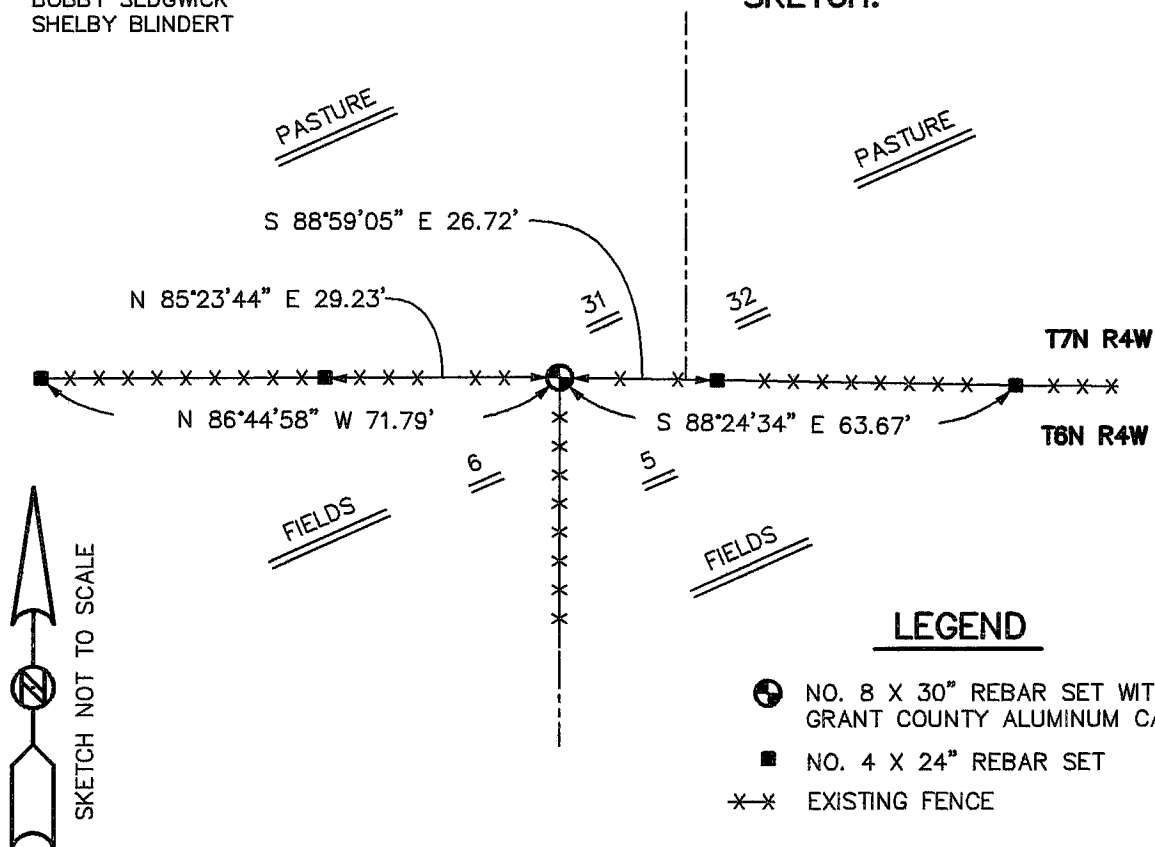
CORNER WAS SET AT AN OCCUPIED FENCE CORNER. THIS LOCATION FIT WELL WITH CORNERS IN THE AREA. VERIFIED THIS LOCATION USING E.D.M. AND G.P.S. METHODS.

DESCRIPTION OF CORNER AND WITNESS MONUMENTS, REFERENCES AND ACCESSORIES USED TO PERPETUATE THE ORIGINAL OR RE-ESTABLISHED LOCATION OF THIS CORNER:

WITNESS TO THE CORNER LOCATION:

BOBBY SEDGWICK
SHELBY BLINDERT

SKETCH:



LEGEND

- NO. 8 X 30" REBAR SET WITH GRANT COUNTY ALUMINUM CAP
- NO. 4 X 24" REBAR SET
- *-* EXISTING FENCE