

GRANT COUNTY CERTIFIED LAND CORNER

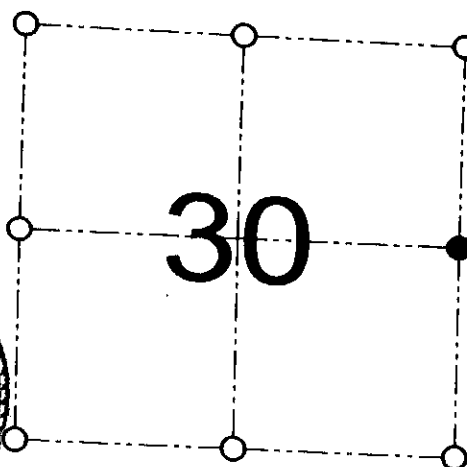
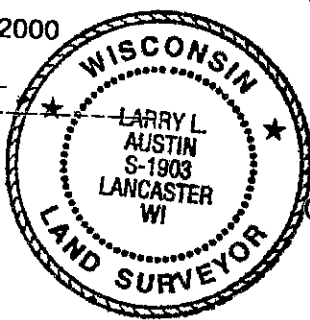
CORNER NUMBER 95

CERTIFICATE:

I, Larry L. Austin, do hereby certify that on the 22nd day of June, 2000, I found evidence of the East 1/4 corner of Section 30, Town 7 North, Range 4 West, of the 4th Principal Meridian, and I re-established said corner according to the Wisconsin statutes as shown and described hereon.

Dated this 27th day of December, 2000

Larry L. Austin
Larry L. Austin S-1903



● = CORNER LOCATION
EAST 1/4 CORNER OF SECTION 30, T 7 N R 4 W TOWN OF WOODMAN

SEAL

HISTORY OF ORIGINAL CORNER ESTABLISHMENT:

Corner was originally set in 1832 by Harvey Parke.
In 1987 Paul Chafer set a #6 iron bar.

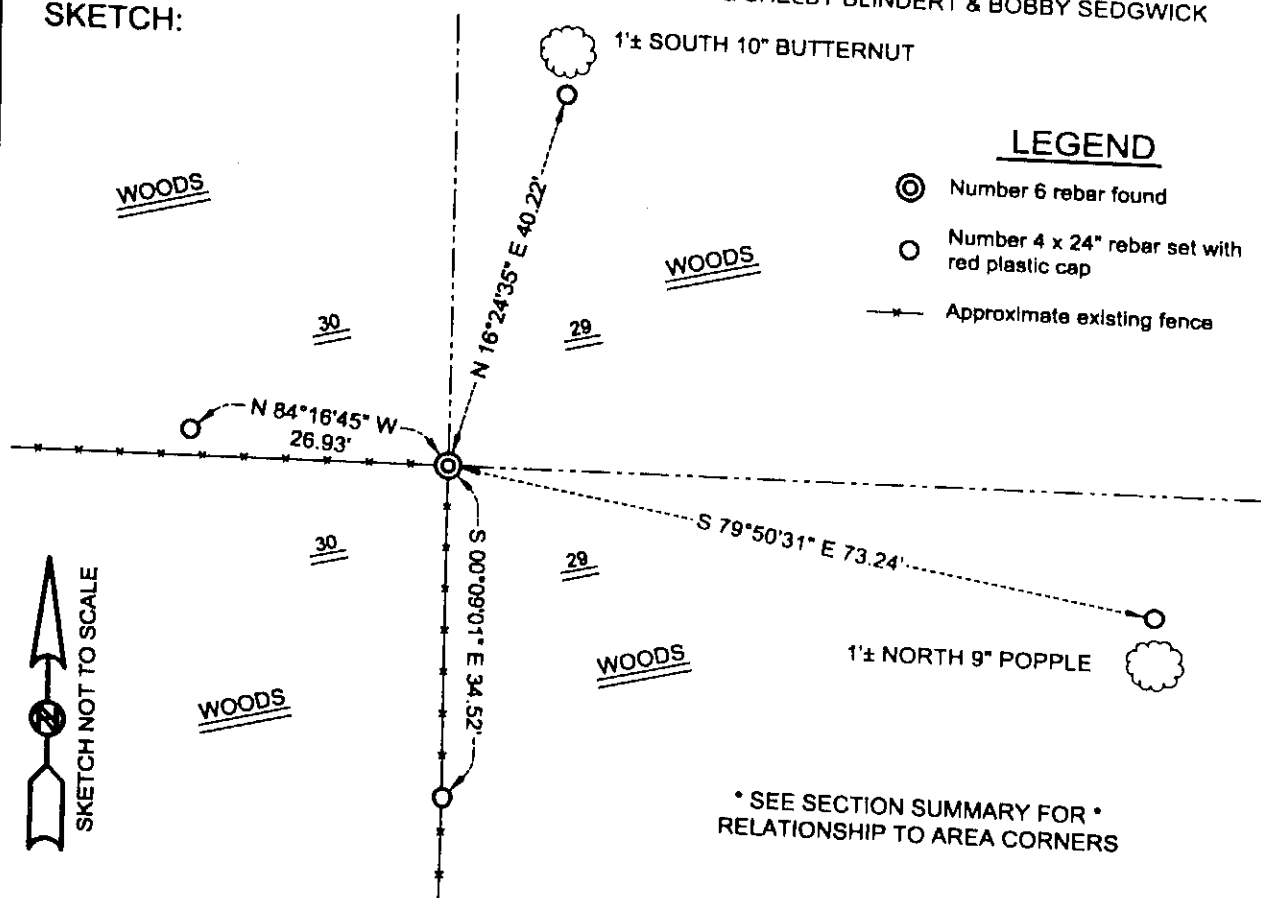
DESCRIPTION OF CORNER EVIDENCE FOUND:

I found the existing #6 iron bar at an occupied fence corner.
I accepted this location after an EDM & GPS traverse of the area.

DESCRIPTION OF CORNER AND WITNESS MONUMENTS, references and accessories used to perpetuate the original or re-established location of this corner

WITNESS TO THE CORNER LOCATION: SHANE AUSTIN & SHELBY BLINDERT & BOBBY SEDGWICK

SKETCH:



AUSTIN ENGINEERING, LLC
4211 HWY 81 E, LANCASTER, WI 53813
PHONE 608-723-6363 FAX 608-723-6702

FIELDBOOK: SDR33, 2006
G:\T7NR4W\32A
C:\SC14\SWA\TIE\T7NR4W\95

DRAWN BY: SW AUSTIN
APPROVED: LL AUSTIN
CREW: BS - SB - SA

RECORD OF CORNER MONUMENTATION

EAST 1/4 CORNER, SECTION 30 TOWNSHIP 7 N., RANGE 4W,
GRANT COUNTY, WISCONSIN.

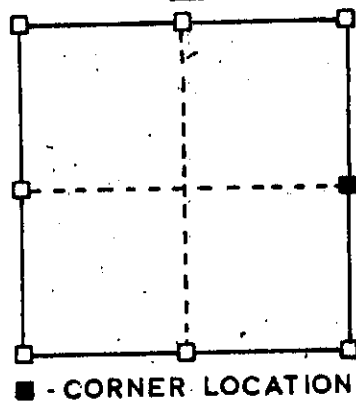
STATE PLANE COORDINATES OF _____
(Y) NORTH _____ ELEVATION _____
(X) EAST _____

HORIZONTAL DATUM: WISCONSIN STATE PLANE COORDINATE SYSTEM, SOUTH ZONE

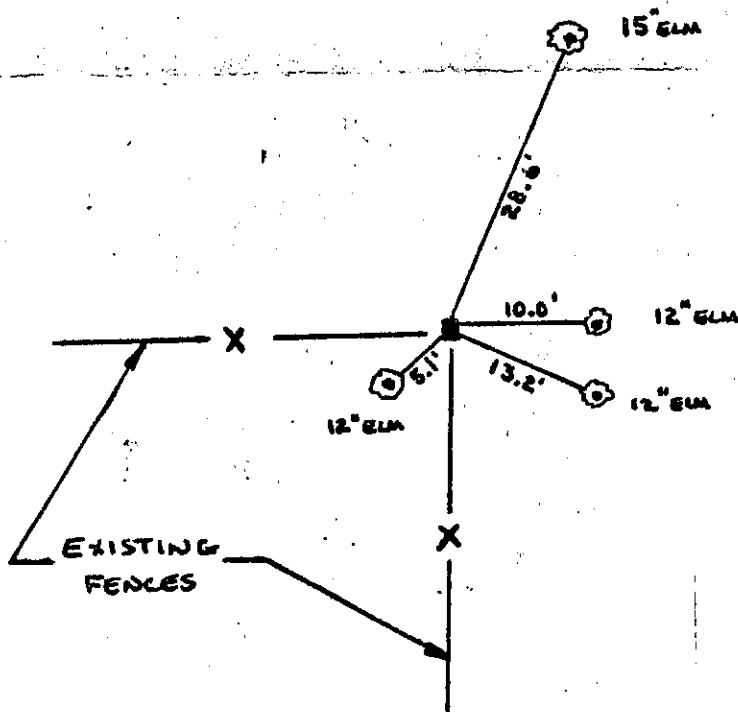


SKETCH OF CORNER
REFERENCE TIES

SECTION 30



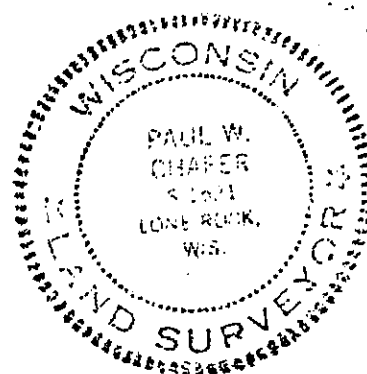
TYPE OF MONUMENT: 3/4" ø x 3'-8" REBAR SET



Woodman Map

SURVEYOR'S CERTIFICATE
STATE OF WISCONSIN)
GRANT COUNTY)

I HEREBY CERTIFY THAT A 3/4" REBAR WAS SET AT THE
QUARTER CORNER LOCATION. THE REQUIRED TIES TO
THIS REBAR WERE MADE AS DESCRIBED ABOVE.



DATED THIS 14 DAY OF
December 1987

Paul W. Chapin
REGISTERED LAND SURVEYOR
S-1521

0.95