

# GRANT COUNTY CERTIFIED LAND CORNER

CORNER NUMBER 112

**CERTIFICATE:**

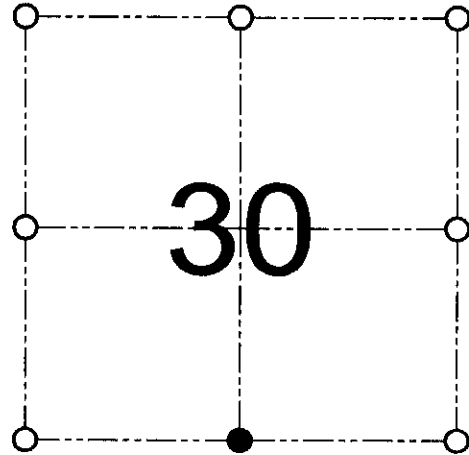
I, Larry L. Austin, do hereby certify that on the 22nd day of June, 2000, I found evidence of the South 1/4 corner of Section 30, Town 7 North, Range 4 West, of the 4th Principal Meridian, and I re-established said corner according to the Wisconsin statutes as shown and described hereon.

Dated this 27th day of December, 2000

*Larry L. Austin*  
Larry L. Austin S-1903



SEAL



● = CORNER LOCATION

SOUTH 1/4 CORNER OF  
SECTION 30, T 7 N R 4 W  
TOWN OF WOODMAN

**HISTORY OF ORIGINAL CORNER ESTABLISHMENT:**

Corner was originally set in 1832 by Harvey Parke.  
In 1890 Gould found remains of both original bearing trees.

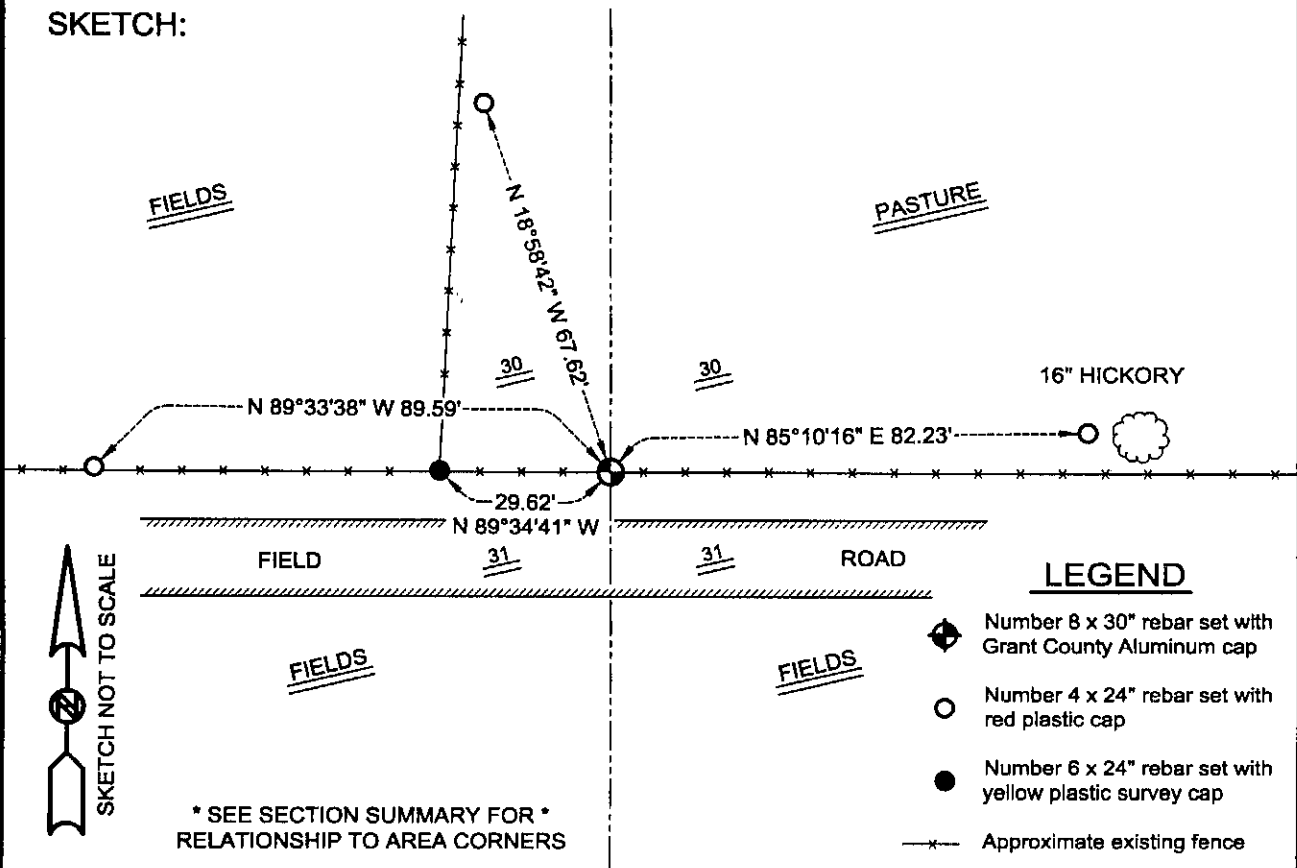
**DESCRIPTION OF CORNER EVIDENCE FOUND:**

I found no evidence of the original bearing trees. I did find an existing East-West fence and accepted it's location for Northing. Easting was established proportionately between the Southwest and Southeast corners of Section 30. Verified this location using EDM & GPS traverses of the area.

**DESCRIPTION OF CORNER AND WITNESS MONUMENTS, references and accessories used to perpetuate the original or re-established location of this corner**

WITNESS TO THE CORNER LOCATION: SHANE AUSTIN & SHELBY BLINDERT & BOBBY SEDGWICK

**SKETCH:**



\* SEE SECTION SUMMARY FOR \*  
RELATIONSHIP TO AREA CORNERS

**LEGEND**

- ◆ Number 8 x 30" rebar set with Grant County Aluminum cap
- Number 4 x 24" rebar set with red plastic cap
- Number 6 x 24" rebar set with yellow plastic survey cap
- x— Approximate existing fence

**AUSTIN ENGINEERING, LLC**  
4211 HWY 81 E, LANCASTER, WI 53813  
PHONE 608-723-6363 FAX 608-723-6702

FIELDBOOK: SDR33, 2006  
G:\T7NR4W\32A  
C:\SC14\SWA\TIE\T7NR4W\112

DRAWN BY: SW AUSTIN  
APPROVED: LL AUSTIN  
CREW: BS - SB - SA