

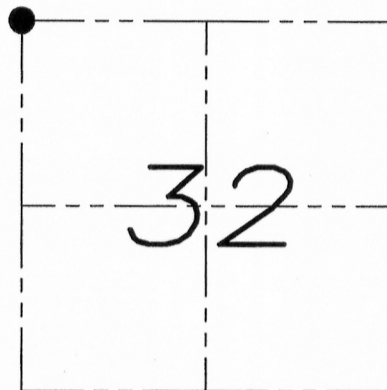
U.S. PUBLIC LAND SURVEY MONUMENT RECORD

Section 32, Town 7 North Range 4 West, Town of Woodman, Grant County, Wisconsin

CERTIFICATE

I, Larry L. Austin, do hereby certify that the corner location on this record was determined by me and/or under my direct supervision and that this U.S. public land survey monument record is correct and complete to the best of my knowledge and belief.

Larry L. Austin
 Larry L. Austin, S-1903



● = CORNER LOCATION

HISTORY OF CORNER

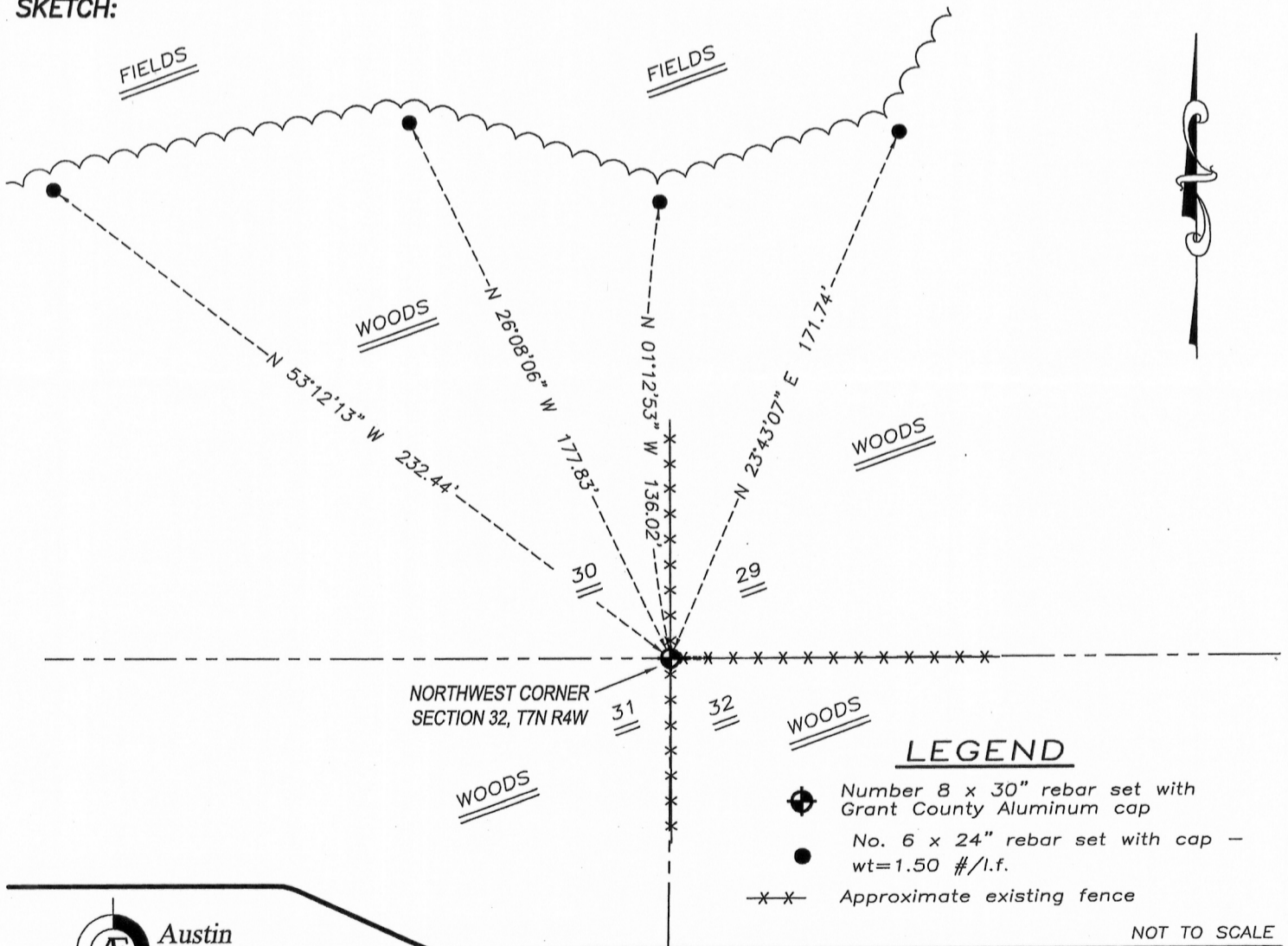
Corner was originally set in 1833 by Hervey Parke. No other record of the corner was found.

CORNER EVIDENCE FOUND

No evidence of the corner was found. I reset the corner at a fence intersection. I verified this location with E.D.M. and G.P.S. methods.

DESCRIPTION OF CORNER AND WITNESS MONUMENTS, references and accessories used to perpetuate the original or re-established location of this corner. Witnesses to monument location Bobby Sedgwick & Brad Digman & Shane Austin

SKETCH:



LEGEND

- ⊕ Number 8 x 30" rebar set with Grant County Aluminum cap
- No. 6 x 24" rebar set with cap - wt=1.50 #/l.f.
- x-x- Approximate existing fence

NOT TO SCALE

Austin Engineering LLC
 austinengineeringllc.com
 4211 HWY 81 E, LANCASTER, WI 53813
 PHONE: 608-723-6363 FAX: 608-723-6702

JOB NUMBER WACHTER
 FIELDBOOK: TDSR, 9801
 G:\T7NR4W\32A
 H:\TIE\T7NR4W\111

DRAWN BY: SW AUSTIN
 APPROVED: LL AUSTIN