

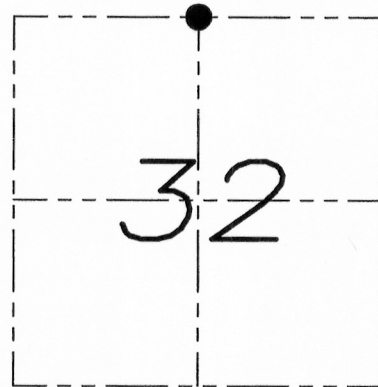
U.S. PUBLIC LAND SURVEY MONUMENT RECORD

Section 32, Town 7 North Range 4 West, Town of Woodman, Grant County, Wisconsin

CERTIFICATE

I, Larry L. Austin, do hereby certify that the corner location on this record was determined by me and/or under my direct supervision and that this U.S. public land survey monument record is correct and complete to the best of my knowledge and belief.

Larry L. Austin
Larry L. Austin, S-1903



● = CORNER LOCATION

HISTORY OF CORNER

Corner was originally set in 1833 by Hervey Park.
No other record of the corner was found.

CORNER EVIDENCE FOUND

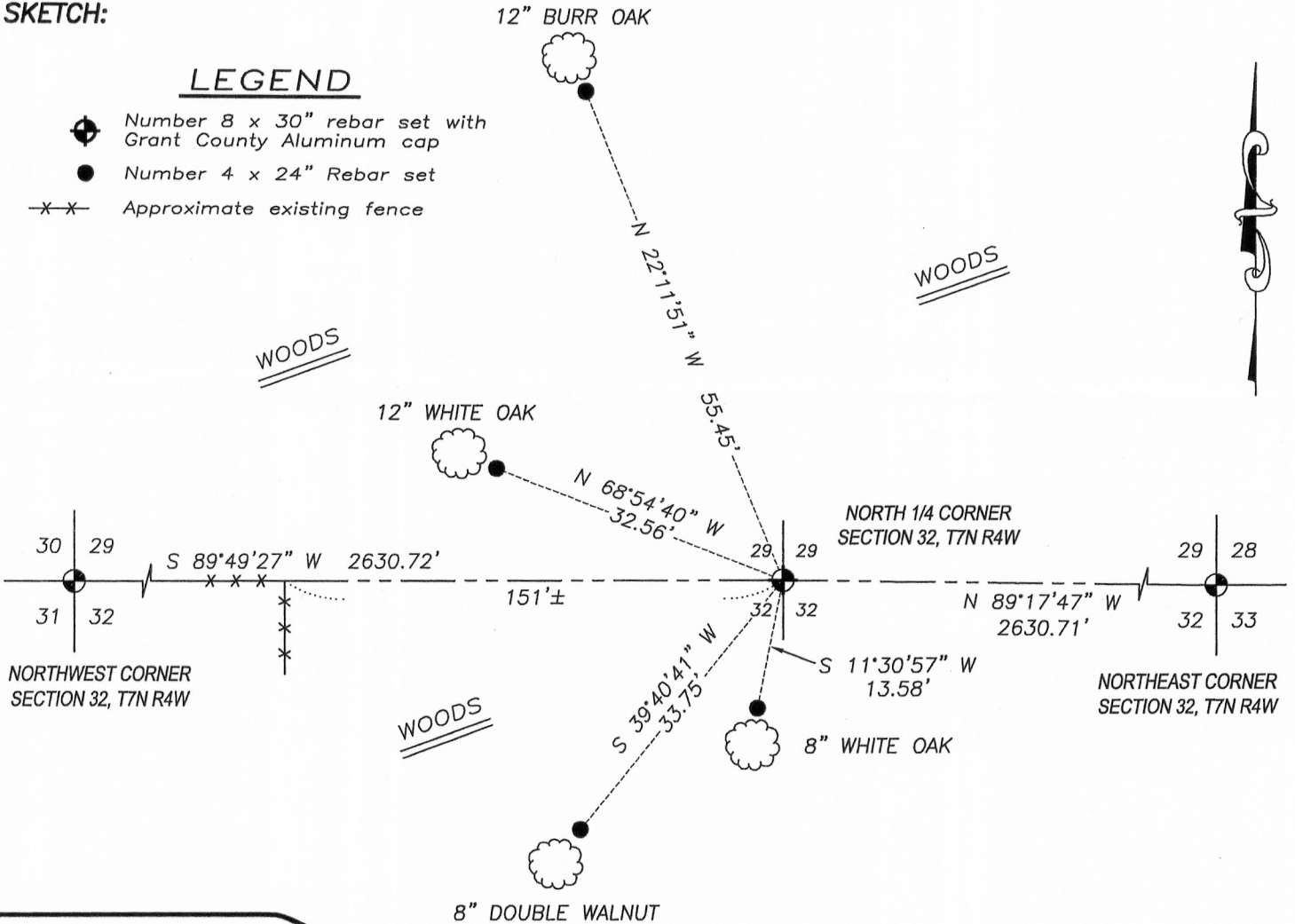
No evidence of the corner was found. I reset the corner based upon a projection of an East-West fence to the West of this corner and proportionally between the Northeast and Northwest corners of Section 32. I verified this location with E.D.M. and G.P.S. methods.

DESCRIPTION OF CORNER AND WITNESS MONUMENTS, references and accessories used to perpetuate the original or re-established location of this corner. Witnesses to monument location Bobby Sedgwick & Shelby Blindert

SKETCH:

LEGEND

- Number 8 x 30" rebar set with Grant County Aluminum cap
- Number 4 x 24" Rebar set
- x-x- Approximate existing fence



NOT TO SCALE



Austin Engineering LLC
austinengineeringllc.com

4211 HWY 81 E, LANCASTER, WI 53813
PHONE: 608-723-6363 FAX: 608-723-6702

JOB NUMBER WACHTER
FIELDBOOK: TDSR, 9801
G:\T7NR4W\32A
H:\TIE\T7NR4W\110

DRAWN BY: SW AUSTIN
APPROVED: LL AUSTIN

110

AUG 04 2011