

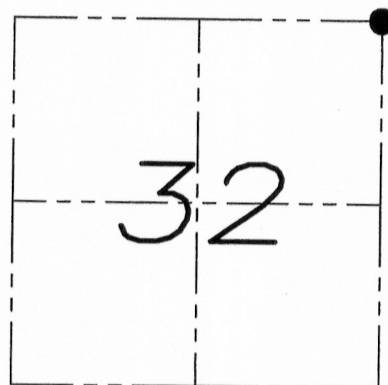
# U.S. PUBLIC LAND SURVEY MONUMENT RECORD

Section 32, Town 7 North Range 4 West, Town of Woodman, Grant County, Wisconsin

## CERTIFICATE

I, Larry L. Austin, do hereby certify that the corner location on this record was determined by me and/or under my direct supervision and that this U.S. public land survey monument record is correct and complete to the best of my knowledge and belief.

*Larry L. Austin*  
Larry L. Austin, S-1903



● = CORNER LOCATION

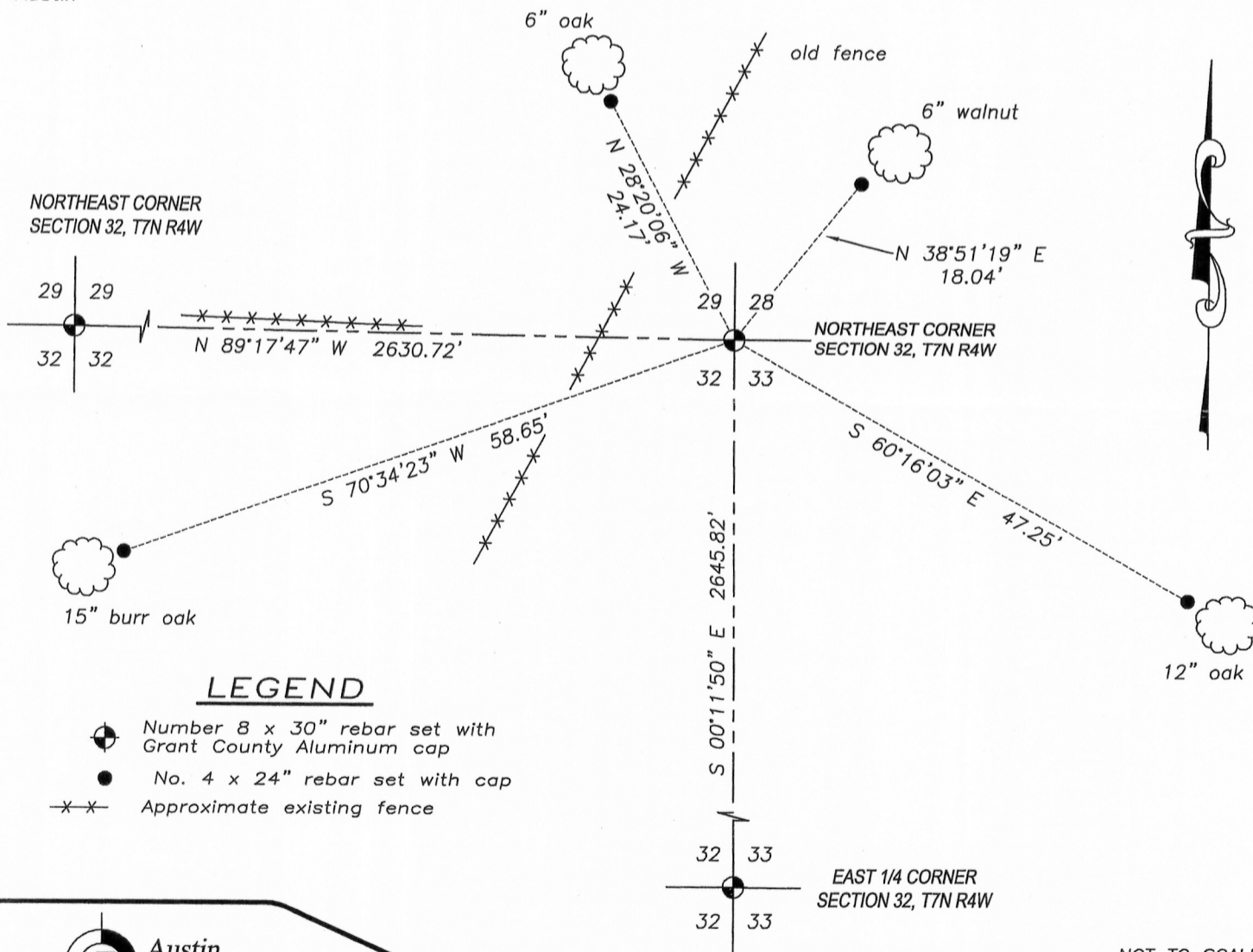
## HISTORY OF CORNER

Corner was originally set in 1833 by Hervey Parke. No other record of the corner was found.

## CORNER EVIDENCE FOUND

No evidence found of the original corner. I reset the corner based upon a projection of an East-West fence and a projection of a East 1/4 and Southeast corner of Section 32. I verified this corner location by E.D.M. and G.P.S. methods.

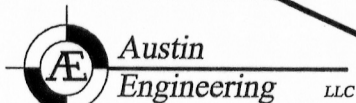
DESCRIPTION OF CORNER AND WITNESS MONUMENTS, references and accessories used to perpetuate the original or re-established location of this corner. Witnesses to monument location Bobby Sedgwick & Brad Digman & Shane Austin



## LEGEND

- Number 8 x 30" rebar set with Grant County Aluminum cap
- No. 4 x 24" rebar set with cap
- x-x- Approximate existing fence

NOT TO SCALE



4211 HWY 81 E, LANCASTER, WI 53813  
PHONE: 608-723-6363 FAX: 608-723-6702

JOB NUMBER WACHTER  
FIELDBOOK: TDSR, 9801  
G:\T7NR4W\32A  
H:\TIE\T7NR4W\109

DRAWN BY: SW AUSTIN  
APPROVED: LL AUSTIN

109

AUG 04 2011