

GRANT COUNTY CERTIFIED LAND CORNER

CORNER NO. 107

CERTIFICATE:

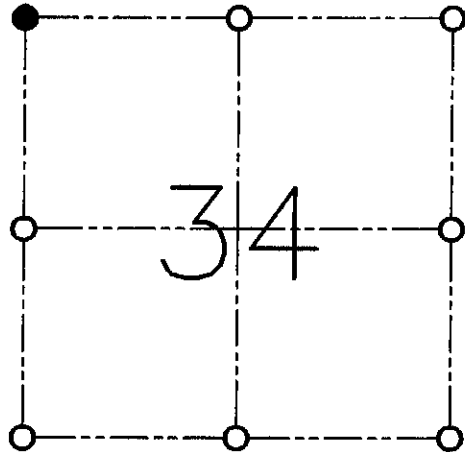
I, LARRY L. AUSTIN, DO HEREBY CERTIFY THAT ON SIXTEENTH DAY OF FEBRUARY, 1999, I FOUND MONUMENTED EVIDENCE OF THE NORTHWEST CORNER OF SECTION 34, TOWN 7 NORTH, RANGE 4 WEST, OF THE FOURTH PRINCIPAL MERIDIAN, AND I RE-ESTABLISHED SAID CORNER ACCORDING TO THE WISCONSIN STATUTES AS SHOWN AND DESCRIBED HEREON.

DATED THIS THIRTY-FIRST DAY OF MARCH, 1999

Larry L. Austin
LARRY L. AUSTIN S-1903



SEAL



● = CORNER LOCATION

**NORTHWEST CORNER
SECTION 34, T 7 N R 4 W
TOWN OF WOODMAN**

HISTORY OF ORIGINAL CORNER ESTABLISHMENT:

CORNER WAS SET IN 1833 BY HARVEY PARKE.

DESCRIPTION OF CORNER EVIDENCE FOUND:

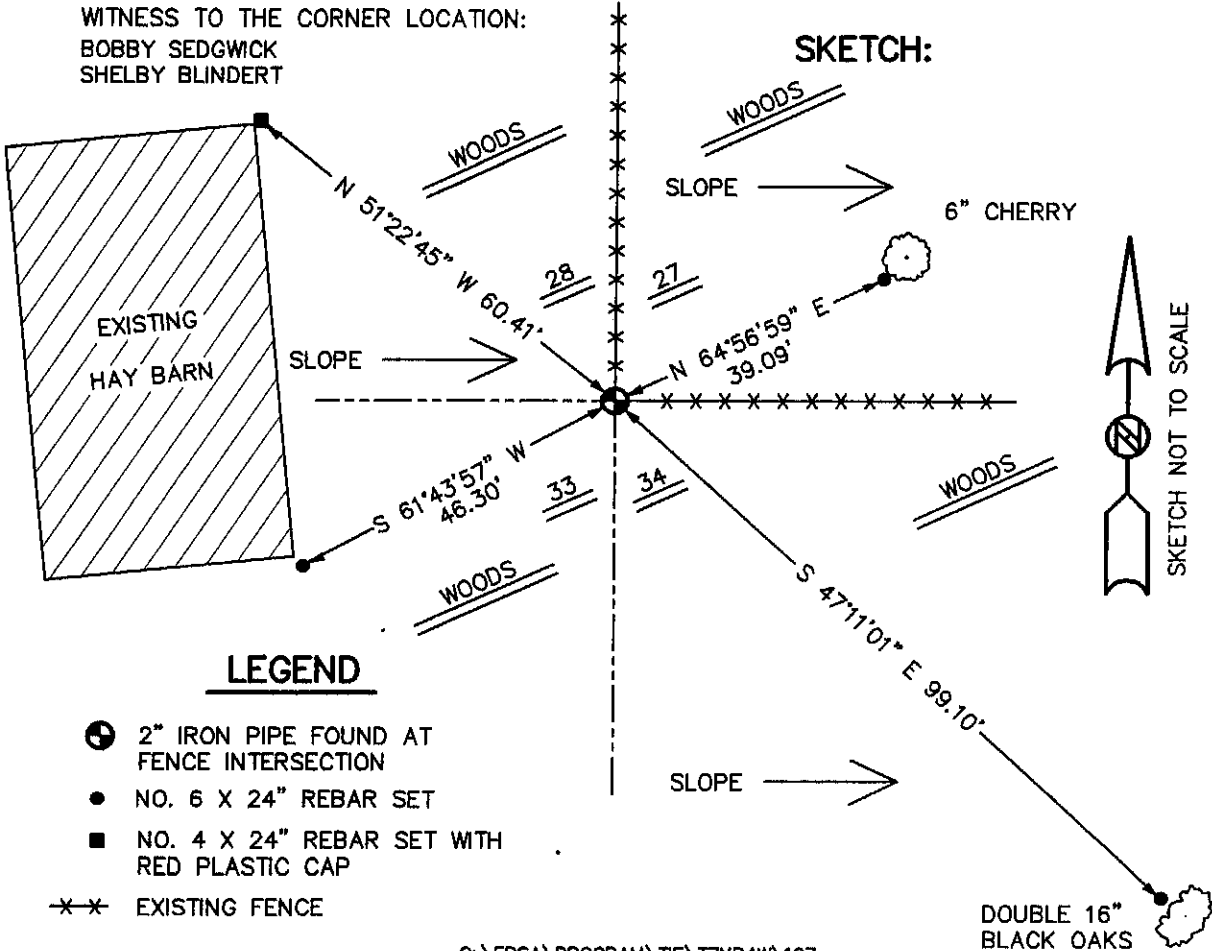
I FOUND A 2" IRON PIPE SET BY ROBERT M. LAMPMAN. I ACCEPTED IT'S LOCATION AFTER AN E.D.M. TRAVERSE OF THE AREA.

DESCRIPTION OF CORNER AND WITNESS MONUMENTS, REFERENCES AND ACCESSORIES USED TO PERPETUATE THE ORIGINAL OR RE-ESTABLISHED LOCATION OF THIS CORNER:

WITNESS TO THE CORNER LOCATION:

BOBBY SEDGWICK
SHELBY BLINDERT

SKETCH:



LEGEND

- 2" IRON PIPE FOUND AT FENCE INTERSECTION
- NO. 6 X 24" REBAR SET
- NO. 4 X 24" REBAR SET WITH RED PLASTIC CAP
- *- EXISTING FENCE