

GRANT COUNTY CERTIFIED LAND CORNER

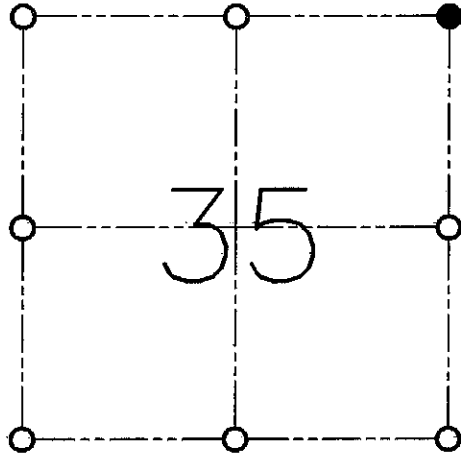
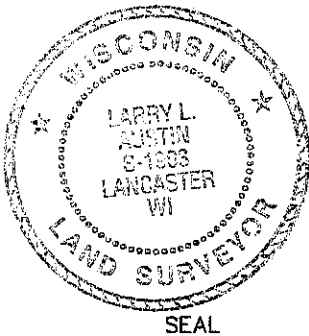
CORNER NO. 103

CERTIFICATE:

I, LARRY L. AUSTIN, DO HEREBY CERTIFY THAT ON TWENTY-FIRST DAY OF SEPTEMBER, 1998, I FOUND MONUMENTED EVIDENCE OF THE NORTHEAST CORNER OF SECTION 35, TOWN 7 NORTH, RANGE 4 WEST OF THE FOURTH PRINCIPAL MERIDIAN, AND I RE-ESTABLISHED SAID CORNER ACCORDING TO THE WISCONSIN STATUTES AS SHOWN AND DESCRIBED HEREON.

DATED THIS EIGHTH DAY OF JANUARY, 1999

Larry L. Austin
LARRY L. AUSTIN S-1983



● = CORNER LOCATION

**NORTHEAST CORNER OF SECTION 9
T 7 N R 4 W
TOWN OF WOODMAN**

HISTORY OF ORIGINAL CORNER ESTABLISHMENT:

CORNER SET IN 1833 BY HARVEY PARKE.

DESCRIPTION OF CORNER EVIDENCE FOUND:

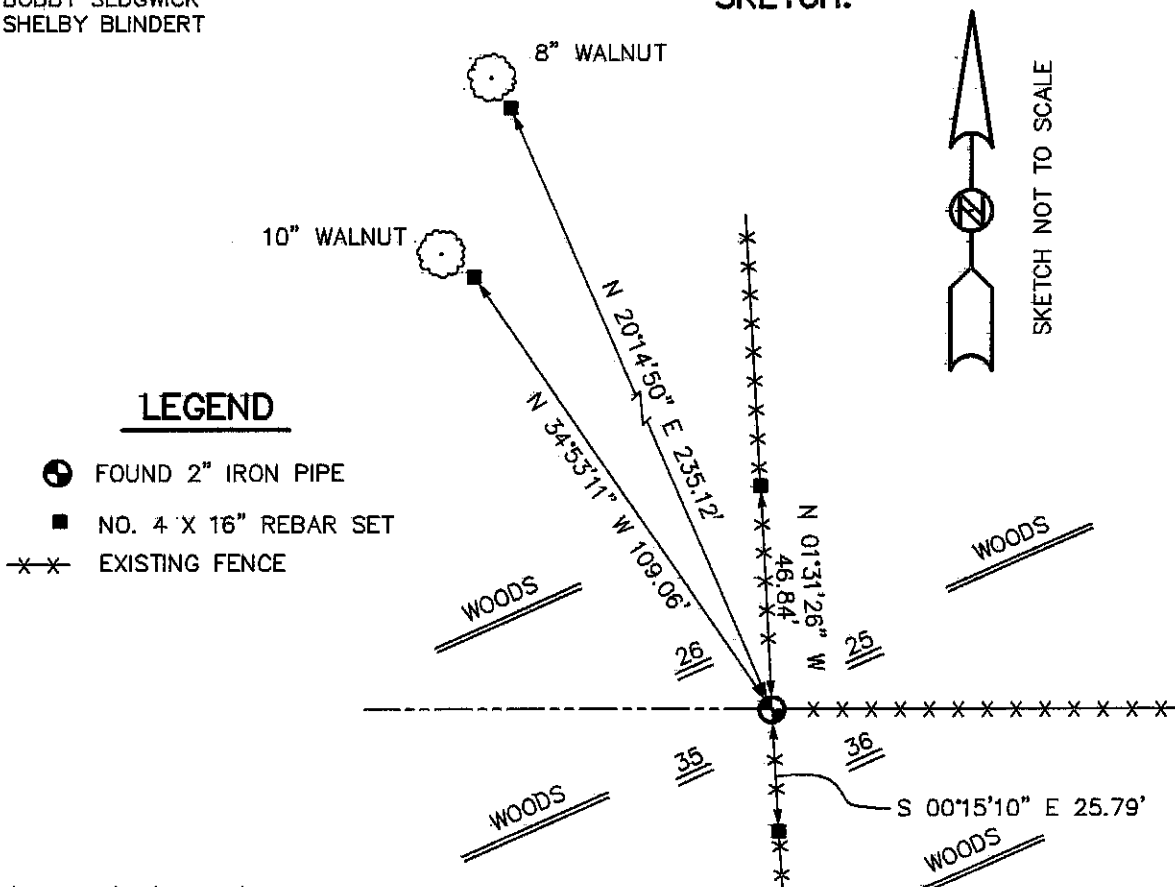
FOUND A 2" IRON PIPE AT AN OCCUPIED FENCE CORNER AND ACCEPTED ITS LOCATION. VERIFIED THIS LOCATION USING E.D.M. AND G.P.S. METHODS.

DESCRIPTION OF CORNER AND WITNESS MONUMENTS, REFERENCES AND ACCESSORIES USED TO PERPETUATE THE ORIGINAL OR RE-ESTABLISHED LOCATION OF THIS CORNER:

WITNESS TO THE CORNER LOCATION:

BOBBY SEDGWICK
SHELBY BLINDERT

SKETCH:



LEGEND

- FOUND 2" IRON PIPE
- NO. 4 X 16" REBAR SET
- ××× EXISTING FENCE