

# GRANT COUNTY CERTIFIED LAND CORNER

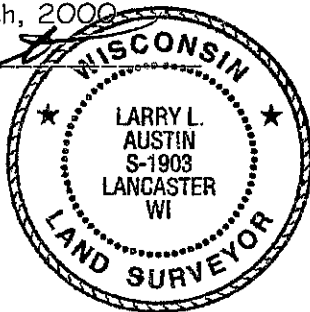
CORNER NUMBER 100

**CERTIFICATE:**

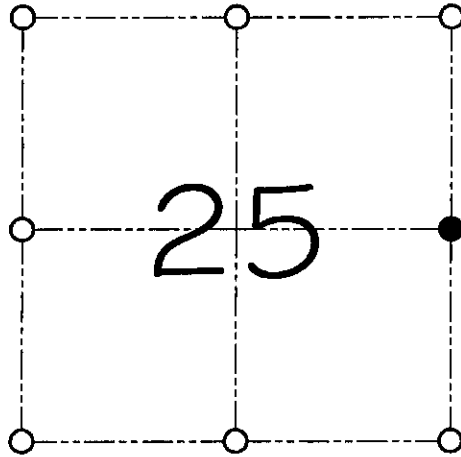
I, Larry L. Austin, do hereby certify that on the 7th day of March, 2000, I found no evidence of the East 1/4 corner of Section 25, Town 7 North, Range 4 West, of the 4th Principal Meridian, and I re-established said corner according to the Wisconsin statutes as shown and described hereon.

Dated this 22nd day of March, 2000

*Larry L. Austin*  
Larry L. Austin S-1903



SEAL



● = CORNER LOCATION  
EAST 1/4 CORNER OF SECTION 25, T 7 N R 4 W TOWN OF WOODMAN

**HISTORY OF ORIGINAL CORNER ESTABLISHMENT:**

Corner was originally set in 1832 by Sibley.  
No other record of the corner was found.

**DESCRIPTION OF CORNER EVIDENCE FOUND:**

I found no evidence of the original corner location.  
I reset the corner based on the East line of the Northeast 1/4.  
Verified this location using E.D.M. & G.P.S. methods.

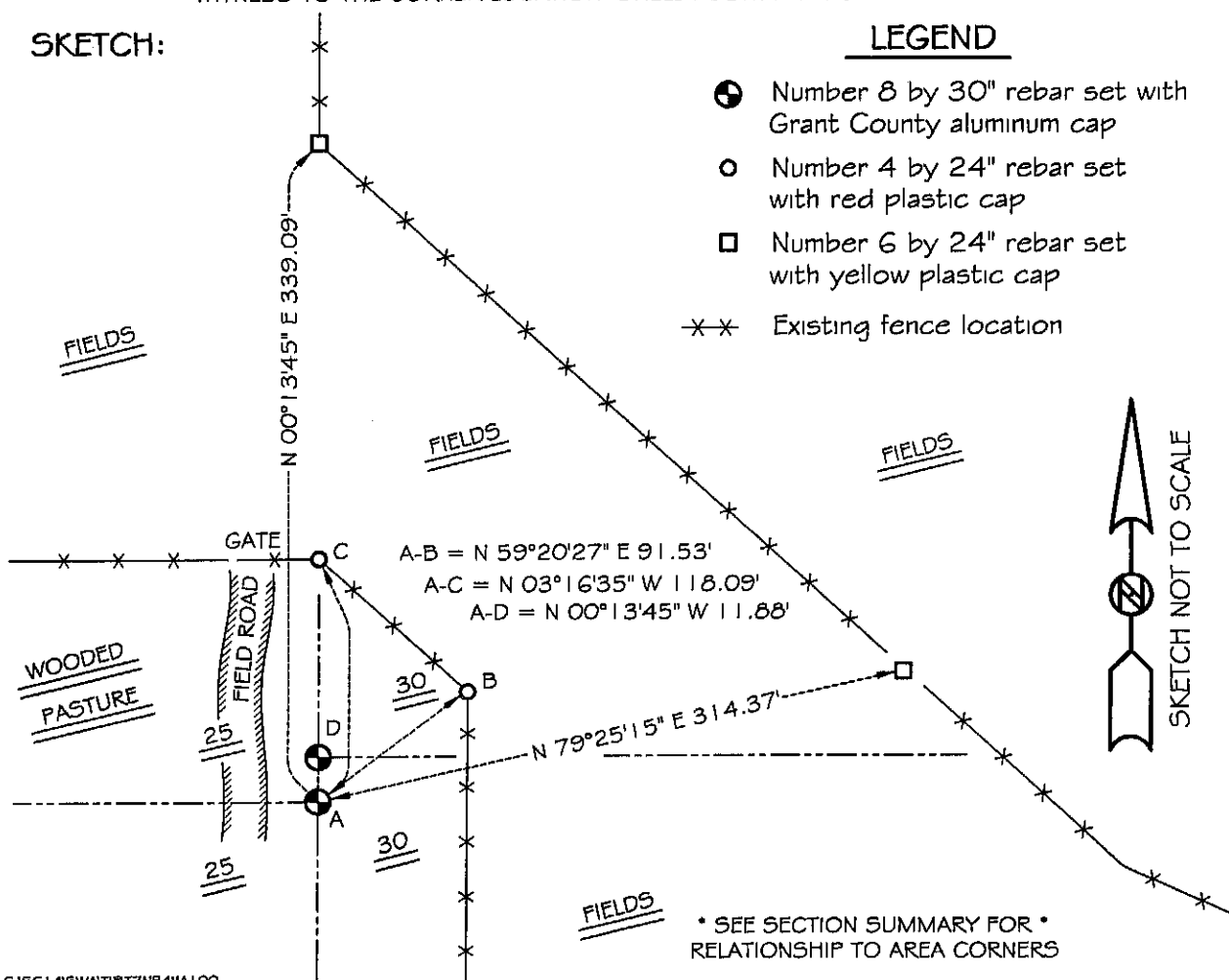
**DESCRIPTION OF CORNER AND WITNESS MONUMENTS, references and accessories used to perpetuate the original or re-established location of this corner**

WITNESS TO THE CORNER LOCATION: SHELBY BLINDERT & SHAWN BEHERNDS

**SKETCH:**

LEGEND

- Number 8 by 30" rebar set with Grant County aluminum cap
- Number 4 by 24" rebar set with red plastic cap
- Number 6 by 24" rebar set with yellow plastic cap
- ×× Existing fence location



\* SEE SECTION SUMMARY FOR \*  
RELATIONSHIP TO AREA CORNERS

# GRANT COUNTY CERTIFIED LAND CORNER

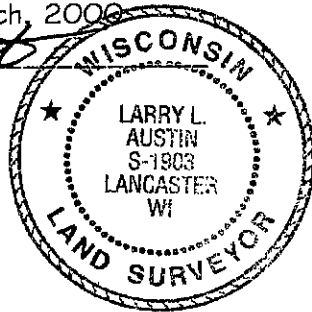
CORNER NUMBER 94

**CERTIFICATE:**

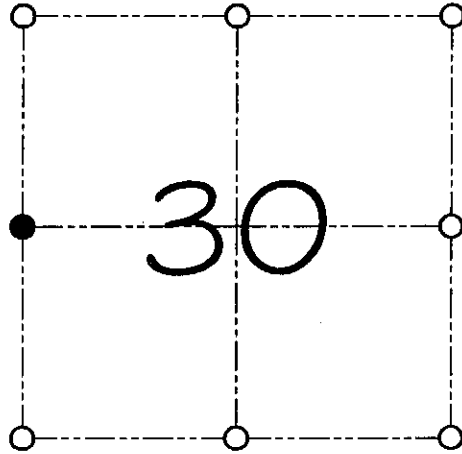
I, Larry L. Austin, do hereby certify that on the 7th day of March, 2000, I found no evidence of the West 1/4 corner of Section 30, Town 7 North, Range 3 West, of the 4th Principal Meridian, and I re-established said corner according to the Wisconsin statutes as shown and described hereon.

Dated this 22nd day of March, 2000

*Larry L. Austin*  
Larry L. Austin S-1903



SEAL



● = CORNER LOCATION

WEST 1/4 CORNER OF  
SECTION 30, T 7 N R 3 W  
TOWN OF MARION

**HISTORY OF ORIGINAL CORNER ESTABLISHMENT:**

Corner was never originally set.  
No other record of the corner was found.

**DESCRIPTION OF CORNER EVIDENCE FOUND:**

I reset the corner based on the proportioned offset from the East 1/4 of Section 25, T7N R4W. Verified this location using E.D.M. & G.P.S. methods.

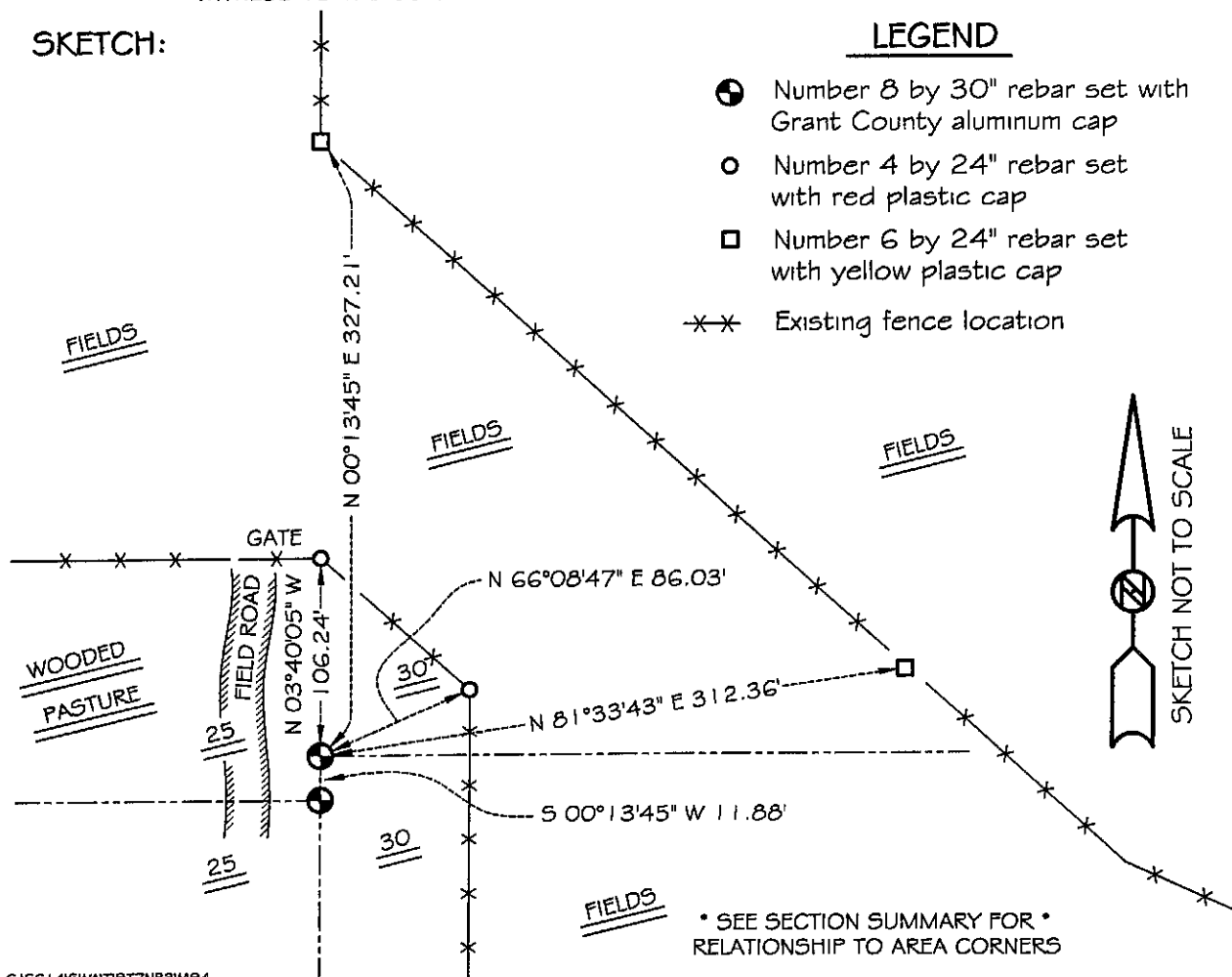
**DESCRIPTION OF CORNER AND WITNESS MONUMENTS, references and accessories used to perpetuate the original or re-established location of this corner**

WITNESS TO THE CORNER LOCATION: SHELBY BLINDERT & SHAWN BEHERNDS

**SKETCH:**

LEGEND

- Number 8 by 30" rebar set with Grant County aluminum cap
- Number 4 by 24" rebar set with red plastic cap
- Number 6 by 24" rebar set with yellow plastic cap
- \*— Existing fence location



\* SEE SECTION SUMMARY FOR \*  
RELATIONSHIP TO AREA CORNERS