

# GRANT COUNTY CERTIFIED LAND CORNER

**CERTIFICATE:**

I, LARRY L. AUSTIN, DO HEREBY CERTIFY THAT ON 17th DAY OF NOVEMBER, 1999, I FOUND EVIDENCE OF THE EAST 1/4 CORNER OF SECTION 19, TOWN 7 NORTH, RANGE 3 WEST, OF THE FOURTH PRINCIPAL MERIDIAN, AND I RE-ESTABLISHED SAID CORNER ACCORDING TO THE WISCONSIN STATUTES AS SHOWN AND DESCRIBED HEREON.

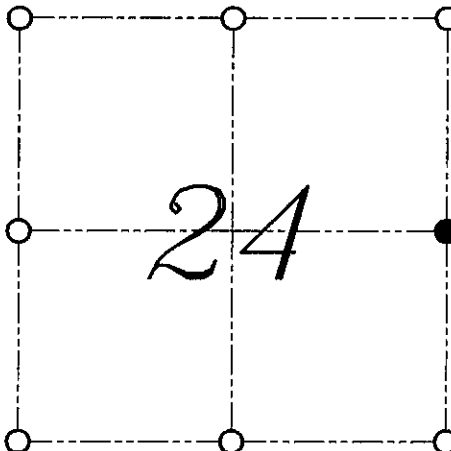
DATED THIS 6th DAY OF DECEMBER, 1999

*Larry L. Austin*  
LARRY L. AUSTIN S-1903



SEAL

CORNER NUMBER 80



● = CORNER LOCATION  
EAST 1/4 CORNER OF  
SECTION 24, T 7 N R 4 W  
TOWN OF WOODMAN

**HISTORY OF ORIGINAL CORNER ESTABLISHMENT:**

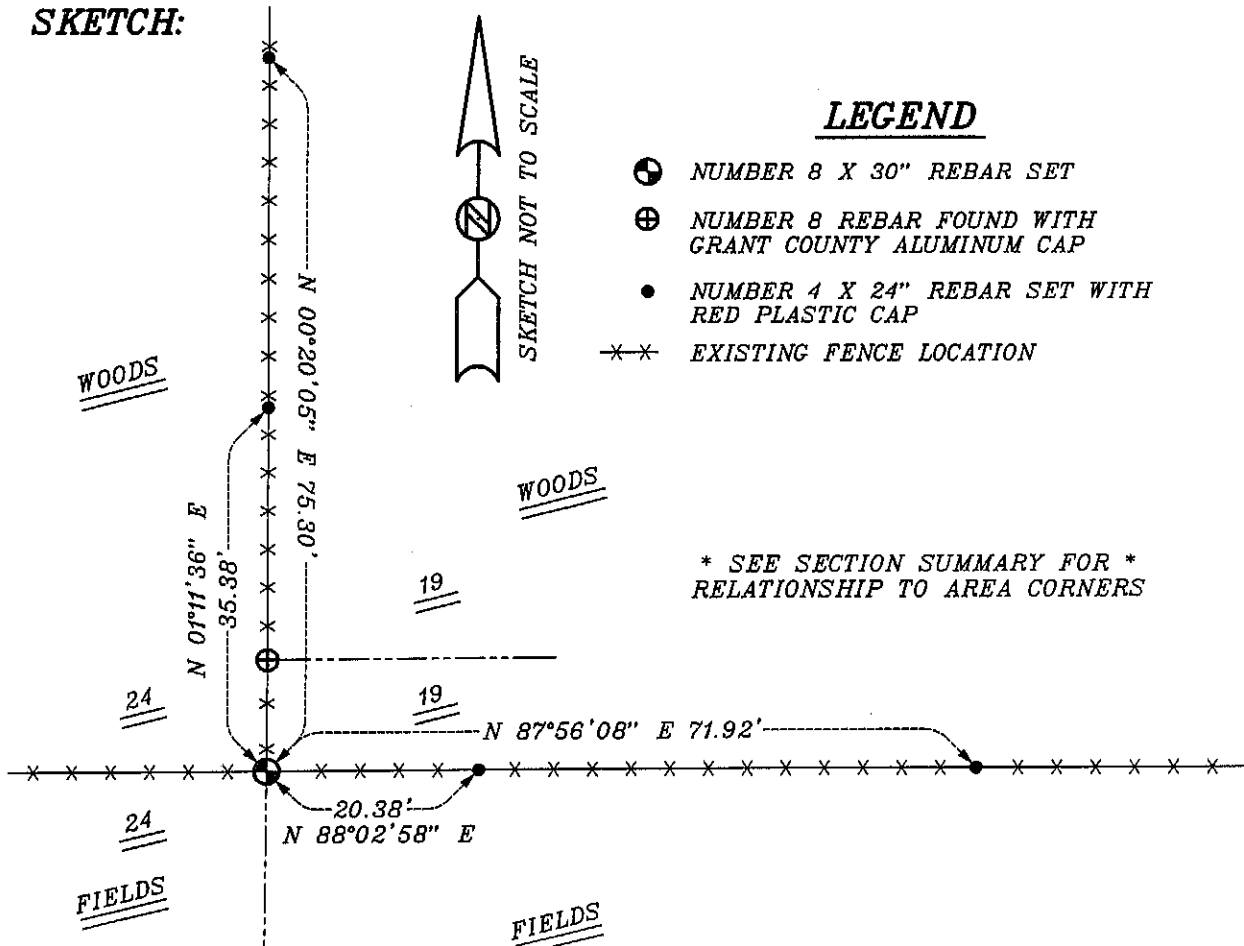
CORNER WAS ORIGINALLY SET IN 1833 BY HARVEY PARKE.  
NO OTHER RECORD OF THE CORNER WAS FOUND.

**DESCRIPTION OF CORNER EVIDENCE FOUND:**

I FOUND AN EXISTING FENCE CORNER AND ACCEPTED IT'S LOCATION AFTER AN E.D.M. AND G.P.S. TRAVERSE OF THE WEST LINE OF SECTION 19.

**DESCRIPTION OF CORNER AND WITNESS MONUMENTS, REFERENCES AND ACCESSORIES USED TO PERPETUATE THE ORIGINAL OR RE-ESTABLISHED LOCATION OF THIS CORNER:**  
WITNESS TO THE CORNER LOCATION: SHANE AUSTIN ; SHELBY BLINDERT

**SKETCH:**



# GRANT COUNTY CERTIFIED LAND CORNER

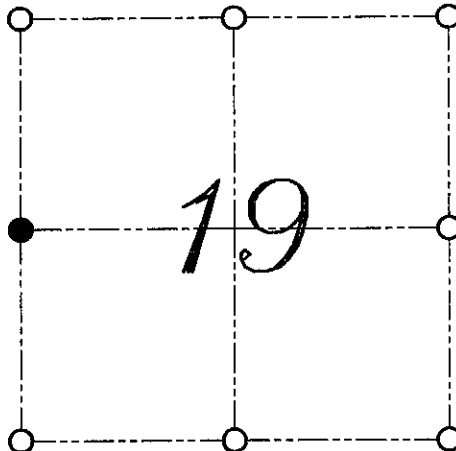
CORNER NUMBER 74

**CERTIFICATE:**

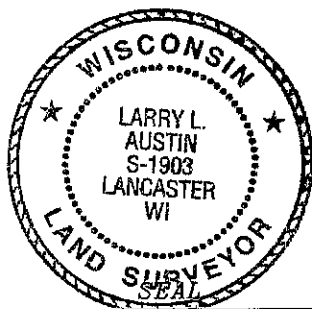
I, LARRY L. AUSTIN, DO HEREBY CERTIFY THAT ON 17th DAY OF NOVEMBER, 1999, I FOUND EVIDENCE OF THE WEST 1/4 CORNER OF SECTION 19, TOWN 7 NORTH, RANGE 3 WEST, OF THE FOURTH PRINCIPAL MERIDIAN, AND I RE-ESTABLISHED SAID CORNER ACCORDING TO THE WISCONSIN STATUTES AS SHOWN AND DESCRIBED HEREON.

DATED THIS 6th DAY OF DECEMBER, 1999

*Larry L. Austin*  
LARRY L. AUSTIN S-1903



● = CORNER LOCATION  
WEST 1/4 CORNER OF  
SECTION 19, T 7 N R 3 W  
TOWN OF MARION



**HISTORY OF ORIGINAL CORNER ESTABLISHMENT:**

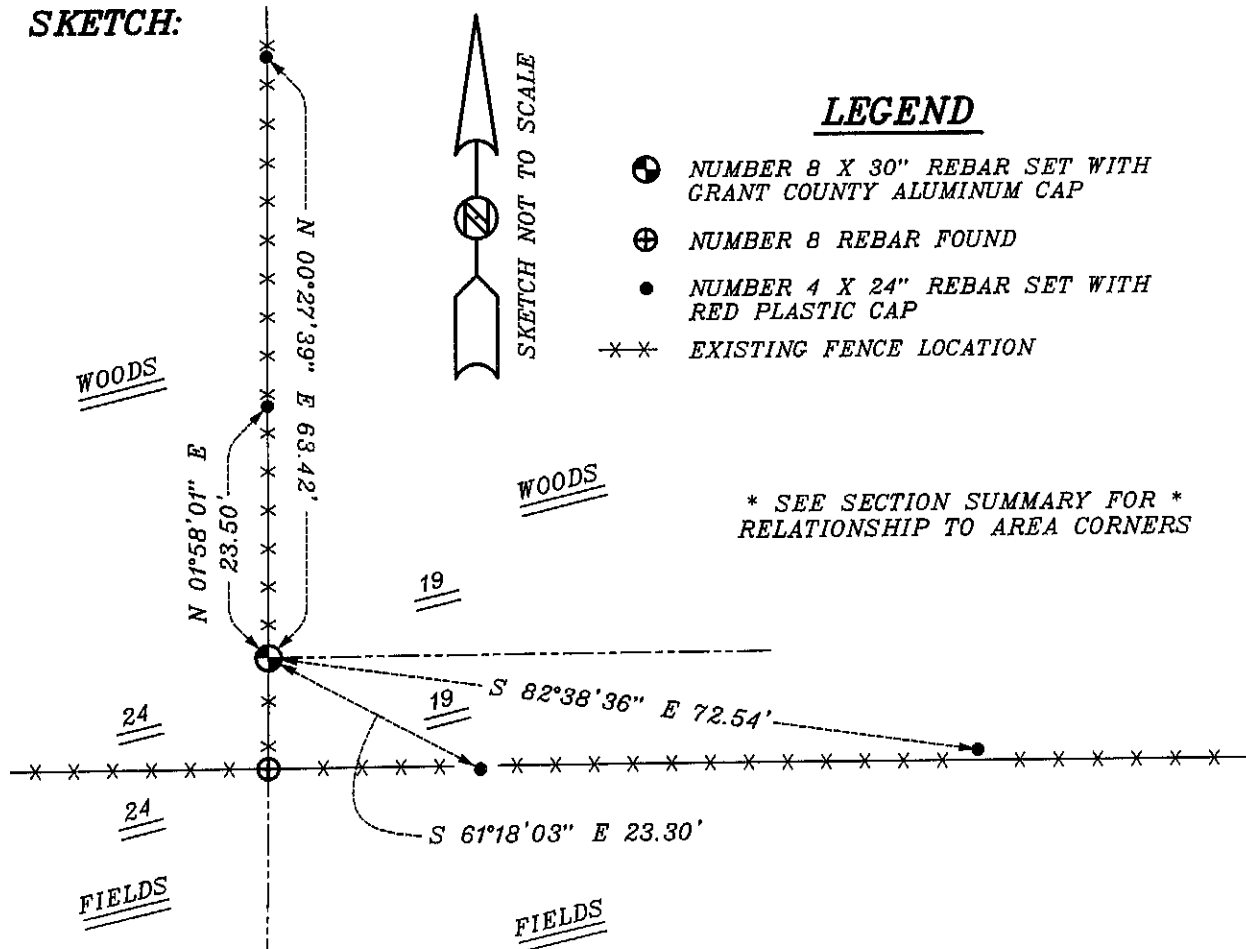
CORNER WAS NEVER ORIGINALLY SET.  
NO RECORD OF THE CORNER WAS FOUND.

**DESCRIPTION OF CORNER EVIDENCE FOUND:**

I SET THE CORNER AT THE PROPORTIONED OFFSET FROM THE EAST QUARTER OF SECTION 24, T7N R4W. VERIFIED THIS LOCATION USING E.D.M. AND G.P.S. METHODS.

DESCRIPTION OF CORNER AND WITNESS MONUMENTS, REFERENCES AND ACCESSORIES USED TO PERPETUATE THE ORIGINAL OR RE-ESTABLISHED LOCATION OF THIS CORNER:  
WITNESS TO THE CORNER LOCATION: SHANE AUSTIN ; SHELBY BLINDERT

**SKETCH:**



**LEGEND**

- NUMBER 8 X 30" REBAR SET WITH GRANT COUNTY ALUMINUM CAP
- ⊕ NUMBER 8 REBAR FOUND
- NUMBER 4 X 24" REBAR SET WITH RED PLASTIC CAP
- \* \* \* \* \* EXISTING FENCE LOCATION

\* SEE SECTION SUMMARY FOR \*  
RELATIONSHIP TO AREA CORNERS