

GRANT COUNTY CERTIFIED LAND CORNER

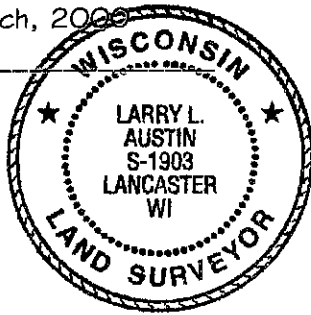
CORNER NUMBER 81

CERTIFICATE:

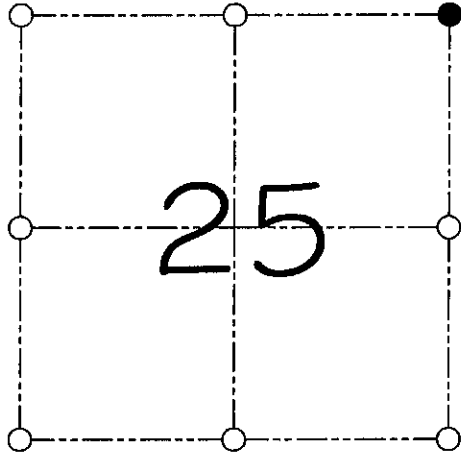
I, Larry L. Austin, do hereby certify that on the 7th day of March, 2000, I found evidence of the Northeast corner of Section 25, Town 7 North, Range 4 West, of the 4th Principal Meridian, and I re-established said corner according to the Wisconsin statutes as shown and described hereon.

Dated this 22nd day of March, 2000

Larry L. Austin
Larry L. Austin S-1903



SEAL



● = CORNER LOCATION

NORTHEAST CORNER OF
SECTION 25, T 7 N R 4 W
TOWN OF WOODMAN

HISTORY OF ORIGINAL CORNER ESTABLISHMENT:

Corner was originally set in 1832 by Sibley.
No other record of the corner was found.

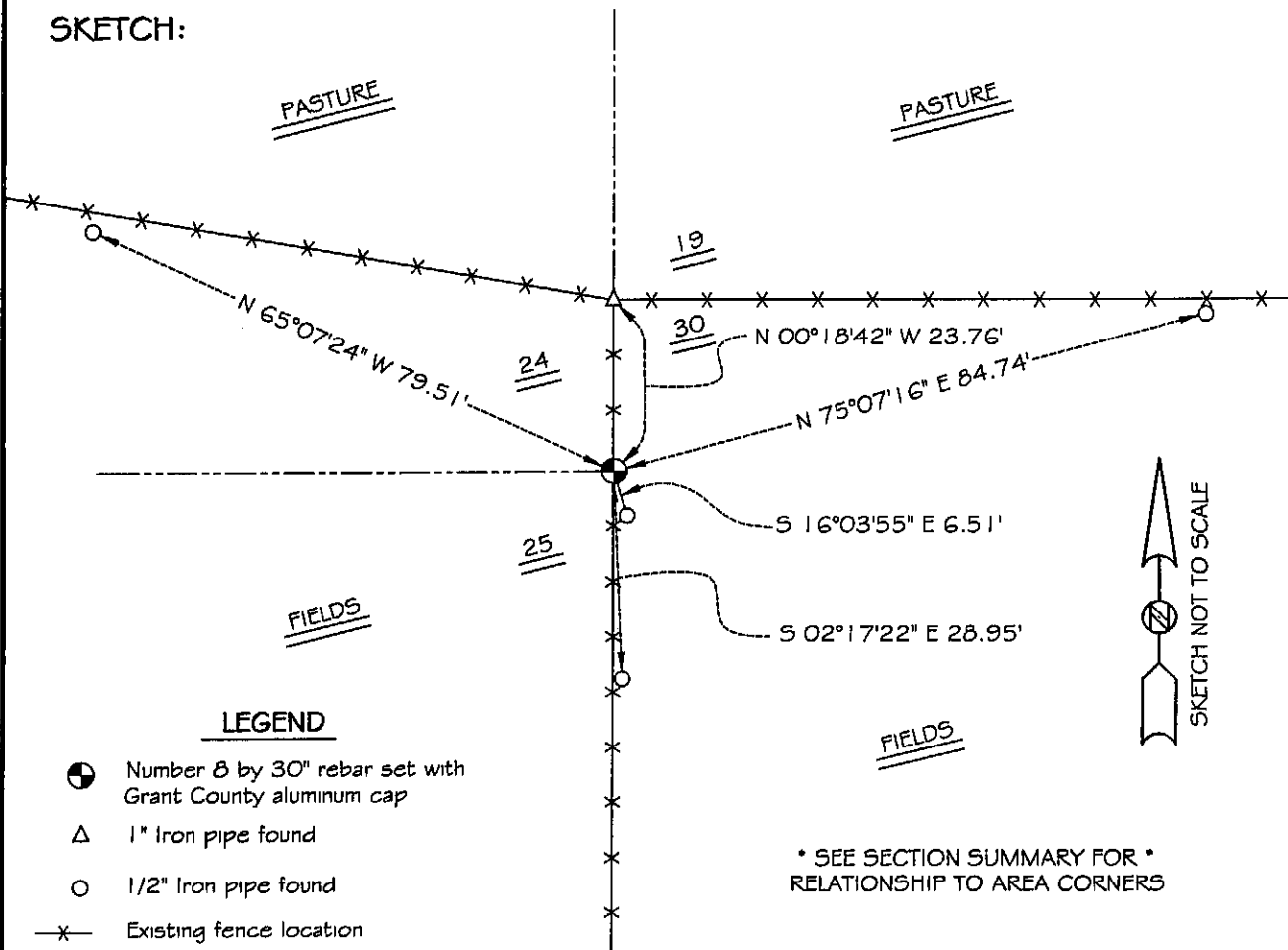
DESCRIPTION OF CORNER EVIDENCE FOUND:

I found a 1" iron pipe at the Northwest corner of Section 30.
I set the corner at the recorded offset from the pipe. Verified this location
using E.D.M. & G.P.S. methods.

DESCRIPTION OF CORNER AND WITNESS MONUMENTS, references and accessories used to perpetuate the original or re-established location of this corner

WITNESS TO THE CORNER LOCATION: SHELBY BLINDERT & BOBBY SEDGWICK

SKETCH:



LEGEND

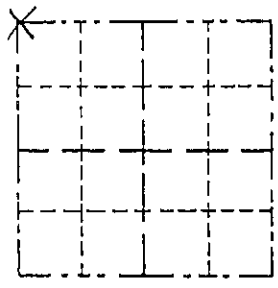
- Number 8 by 30" rebar set with Grant County aluminum cap
- △ 1" Iron pipe found
- 1/2" Iron pipe found
- x— Existing fence location

* SEE SECTION SUMMARY FOR *
RELATIONSHIP TO AREA CORNERS

Survey Monument Record

TYPE OF MONUMENT 1" Iron Pipe
 STATE PLANE COORDINATES: N _____
 E _____
 ELEVATION — M.S.L. DATUM: _____
 THETA ANGLE: _____
 FIELD BOOK: 95-11
 PAGE _____

CORNER NO. _____
 SECTION 30 FEB 5 1996
 TOWN 7N
 RANGE 3W



BASIS FOR MONUMENT LOCATION

(Use reverse side if necessary)

Show info such as: History of corner, with reference to Vol. and pg., dates, surveyor; exact description of monument replaced; if location computed, by taped or EDM traverse; landowner, remarks, etc.

LOCATION
 (Indicated by "X")

- FOUND PERPETUATED LOCATION
- OBLITERATED EVIDENCE LOCATION
- LOST CORNER (RESTORED BY PROPORTIONATE METHODS)

There are no survey records of this corner since the original government survey. Ownership records indicate that the corner has been maintained since the mid 1800's. The nearby corner for the west side of the town line has had no change of ownership across the line between section 25 and 24 since this time. The original bearing trees are gone. The occupied location of a fence East and South and a field fence to the northwest was accepted as the corner location and monuments EDM shots on the fence lines along the north line of the section do not vary off the line more than a few feet despite the rough terrain.

CERTIFIED CORRECT TO THE BEST OF MY KNOWLEDGE AND BELIEF

Michael R. LaRosa
 Registered Land Surveyor

DATE: 1/10/1996

TIE SKETCH

Show at least ~~two~~ (4) ties and monument



1" = 30' ±
 Legend
 x x fence
 o 1/2" Iron Pipe St.

