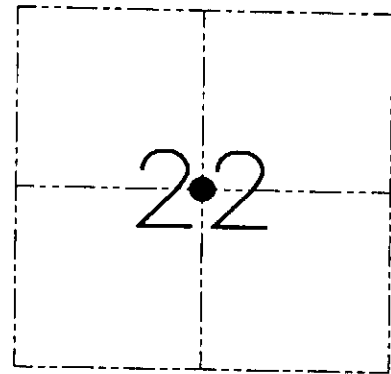
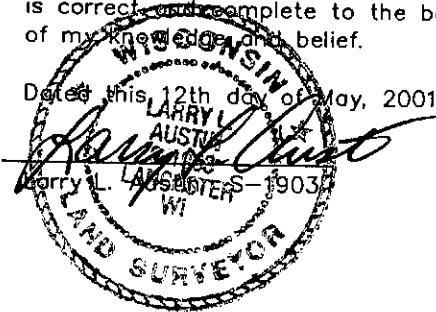


**U.S. PUBLIC LAND SURVEY MONUMENT RECORD - GRANT COUNTY, WI**  
 Section 22, Town 7 North Range 4 West, Town of Woodman

**CERTIFICATE**

I, Larry L. Austin, do hereby certify that the corner location on this record was determined by me and/or under my direct supervision and that this U.S. public land survey monument record is correct and complete to the best of my knowledge and belief.

Dated this 12th day of May, 2001



● = CORNER LOCATION

**HISTORY OF CORNER ESTABLISHMENT**

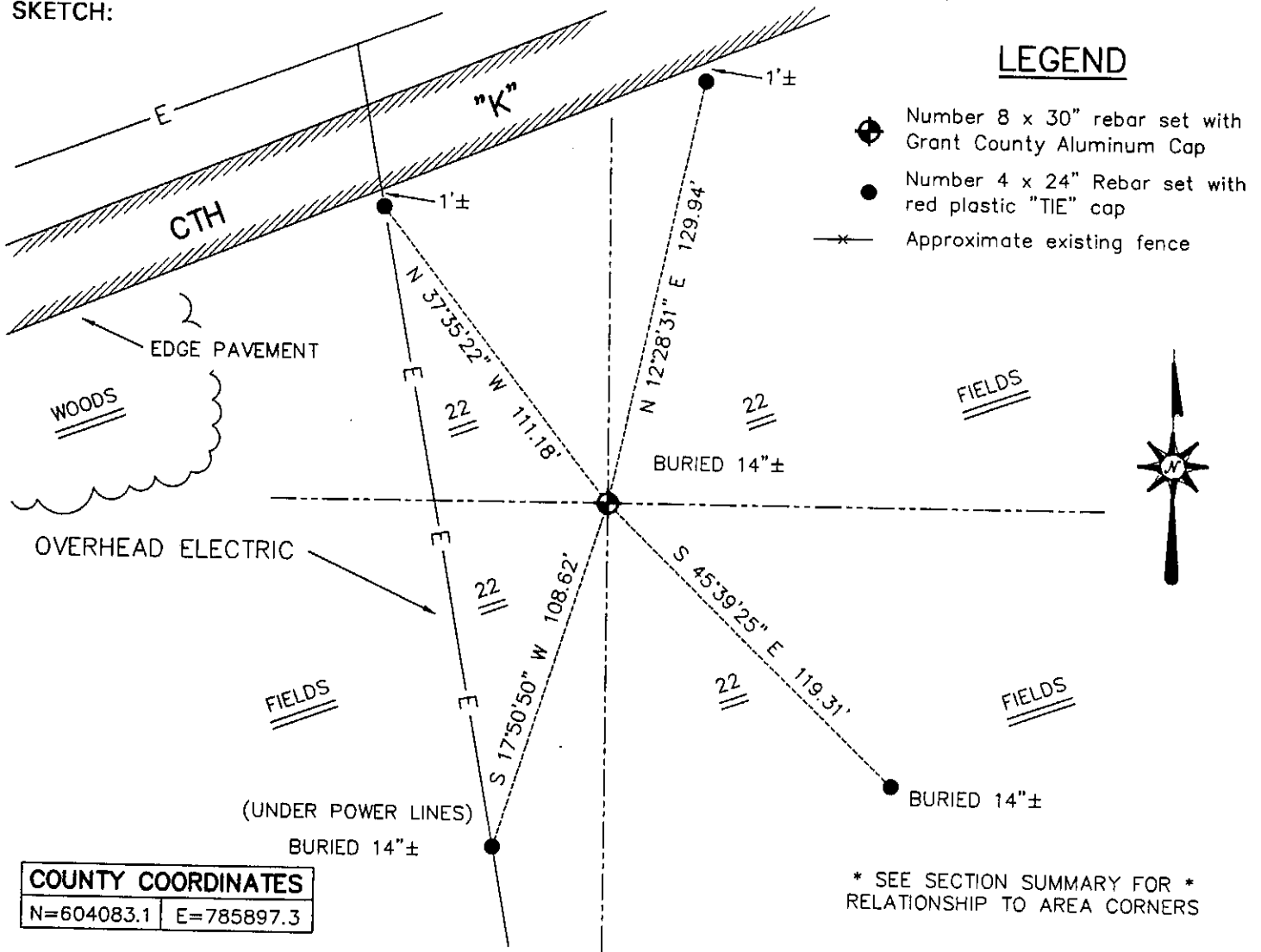
Corner was never originally set.

**DESCRIPTION OF CORNER EVIDENCE FOUND**

I set the corner at the intersection of the Quarter lines. Verified this location using an EDM & GPS traverse of the area.

**DESCRIPTION OF CORNER AND WITNESS MONUMENTS, references and accessories used to perpetuate the original or re-established location of this corner. Witnesses to the corner location Bobby Sedgwick & Shane Austin & Tim Fauver.**

SKETCH:



SKETCH NOT TO SCALE

**AUSTIN ENGINEERING, LLC**

4211 HWY 81 EAST, LANCASTER, WI 53813  
 PHONE 608-723-6363 FAX 608-723-6702

FIELDBOOK: SDR33, 2007, 2009,  
 G:\T7NR4W\133 2020  
 C:\SWA\TIE\T7NR4W\77A  
 CREW: BS-SB-SA-TF

DRAWN BY: SW AUSTIN  
 APPROVED: LL AUSTIN

**CORNER NUMBER 77A**