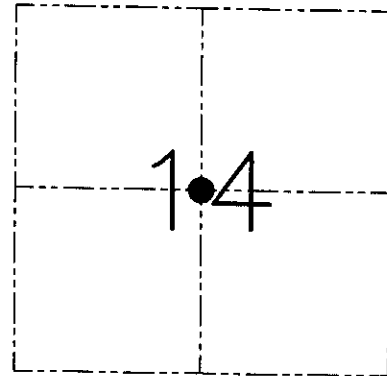
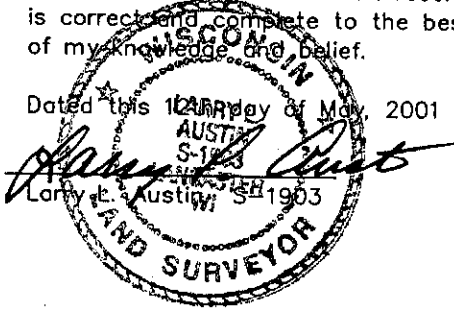


U.S. PUBLIC LAND SURVEY MONUMENT RECORD - GRANT COUNTY, WI
 Section 14, Town 7 North Range 4 West, Town of Woodman

CERTIFICATE

I, Larry L. Austin, do hereby certify that the corner location on this record was determined by me and/or under my direct supervision and that this U.S. public land survey monument record is correct and complete to the best of my knowledge and belief.

Dated this 12th day of May, 2001



● = CORNER LOCATION

HISTORY OF CORNER ESTABLISHMENT

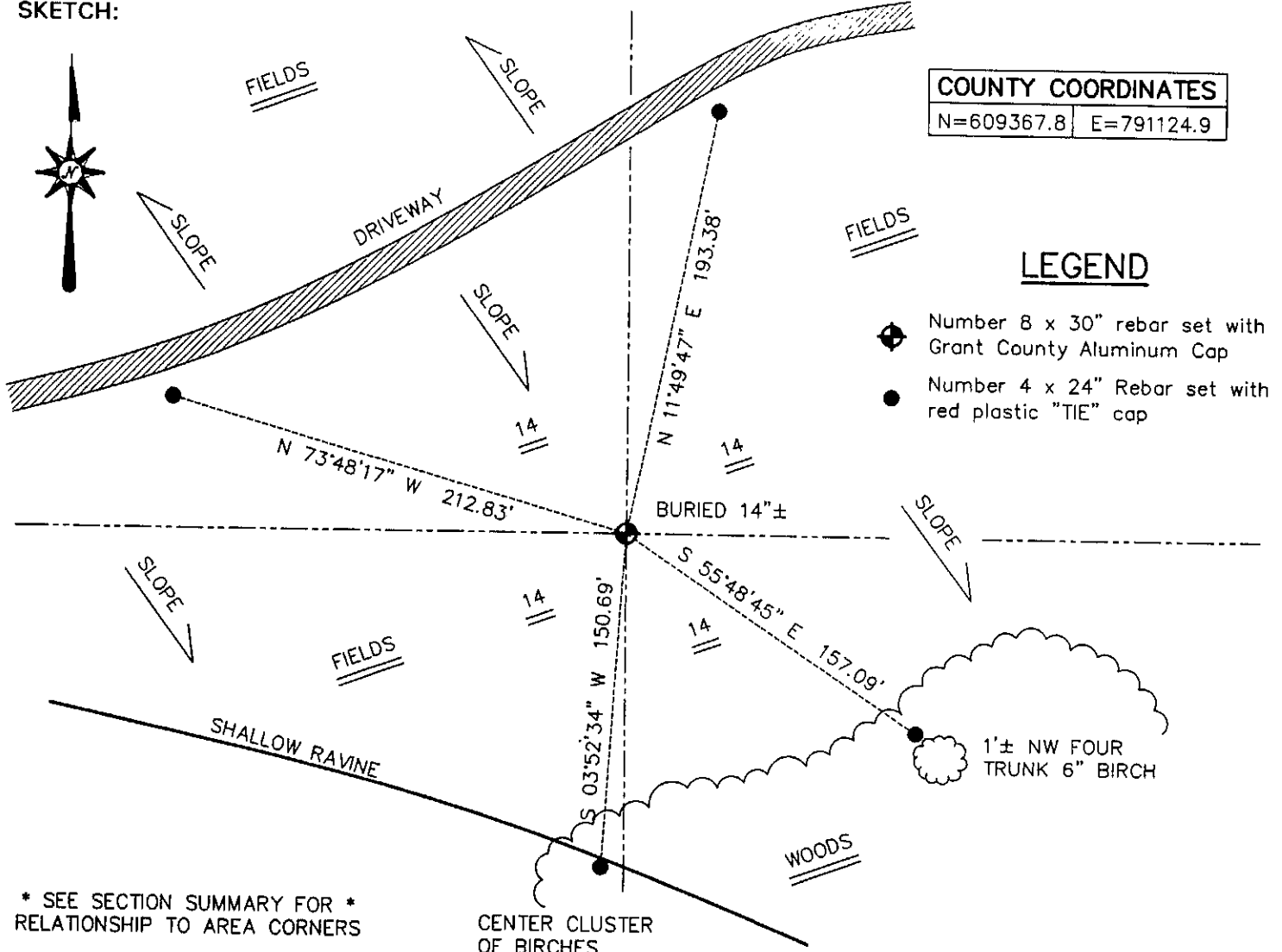
Corner was never originally set.
 No other record of the corner was found.

DESCRIPTION OF CORNER EVIDENCE FOUND

I reset the corner at the intersection of the Quarter lines.
 Verified this location using EDM & GPS methods.

DESCRIPTION OF CORNER AND WITNESS MONUMENTS, references and accessories used to perpetuate the original or re-established location of this corner. Witnesses to the corner location Bobby Sedgwick & Shane Austin & Tim Fauver.

SKETCH:



* SEE SECTION SUMMARY FOR *
 RELATIONSHIP TO AREA CORNERS

SKETCH NOT TO SCALE

AUSTIN ENGINEERING, LLC

4211 HWY B1 EAST, LANCASTER, WI 53813
 PHONE 608-723-6363 FAX 608-723-6702

FIELDBOOK: SDR33, 2007, 2009,
 G:\T7NR4W\133 2020
 C:\SWA\TIE\T7NR4W\58A
 CREW: BS-SB-SA-TF

DRAWN BY: SW AUSTIN
 APPROVED: LL AUSTIN

CORNER NUMBER 58A