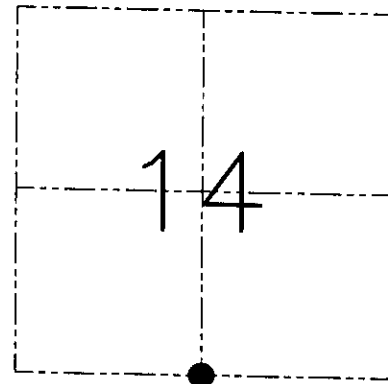
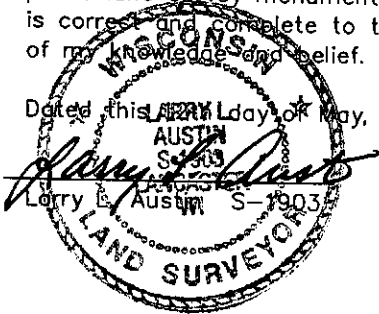


U.S. PUBLIC LAND SURVEY MONUMENT RECORD - GRANT COUNTY, WI
 Section 14, Town 7 North Range 4 West, Town of Woodman

CERTIFICATE

I, Larry L. Austin, do hereby certify that the corner location on this record was determined by me and/or under my direct supervision and that this U.S. public land survey monument record is correct and complete to the best of my knowledge and belief.

Dated this 12th day of May, 2001



● = CORNER LOCATION

HISTORY OF CORNER ESTABLISHMENT

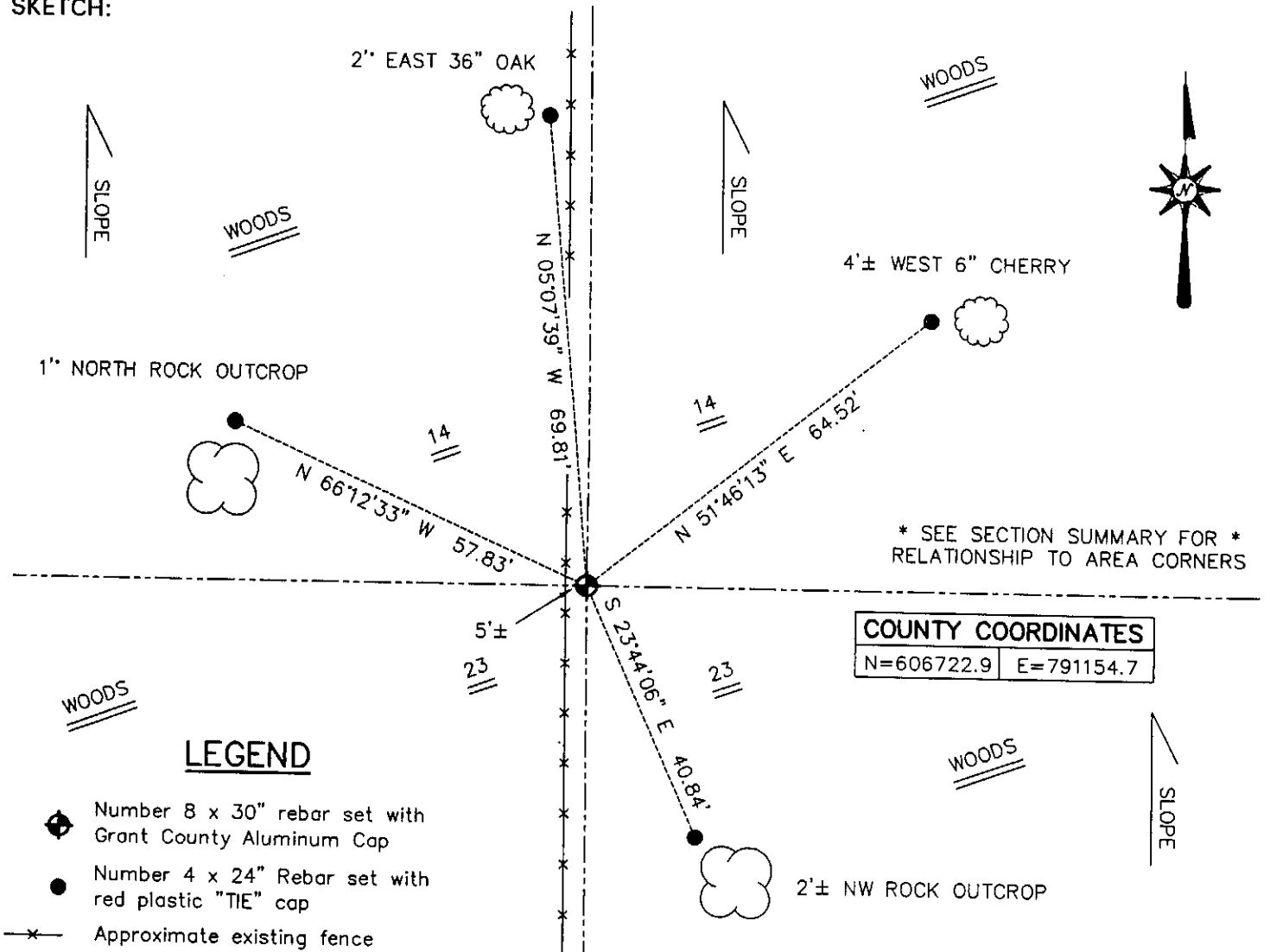
Corner was originally set in 1833 by Harvey Parke.
 In 1882 Scott set a stake in a pile of stone.

DESCRIPTION OF CORNER EVIDENCE FOUND

I was unable to locate the pile of stone. I set the corner proportionately and online between the Southwest and Southeast corners of Section 14. Verified this location using EDM & GPS methods.

DESCRIPTION OF CORNER AND WITNESS MONUMENTS, references and accessories used to perpetuate the original or re-established location of this corner. Witnesses to the corner location Bobby Sedgwick & Shane Austin & Tim Fauver.

SKETCH:



COUNTY COORDINATES	
N=606722.9	E=791154.7

LEGEND

- Number 8 x 30" rebar set with Grant County Aluminum Cap
- Number 4 x 24" Rebar set with red plastic "TIE" cap
- x- Approximate existing fence

SKETCH NOT TO SCALE

AUSTIN ENGINEERING, LLC

4211 HWY 81 EAST, LANCASTER, WI 53813
 PHONE 608-723-6363 FAX 608-723-6702

FIELDBOOK: SDR33, 2007, 2009,
 G: \T7NR4W\133 2020
 C: \SWA\TIE\T7NR4W\64
 CREW: BS-SB-SA-TF

DRAWN BY: SW AUSTIN
 APPROVED: LL AUSTIN

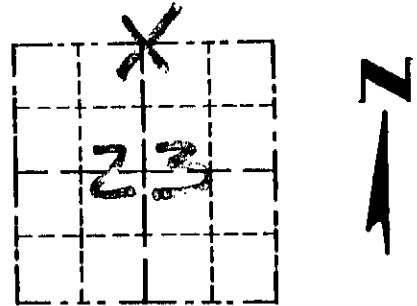
CORNER NUMBER 64

Survey Monument Record

TYPE OF MONUMENT 3/4" X 24" IRON BAR SET

CORNER NO. 64
 SECTION 23
 TOWN 7N
 RANGE 4W

FIELD BOOK: 97-02
 PAGE (13)



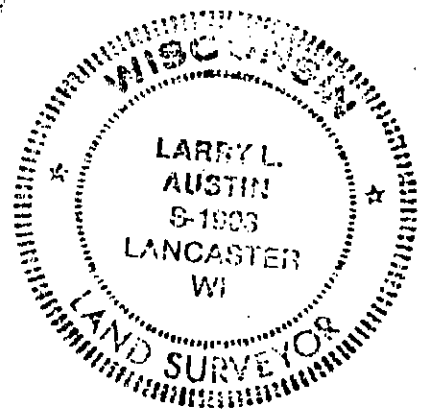
LOCATION
 (Indicated by "X")

BASIS FOR MONUMENT LOCATION

(Use reverse side if necessary)

Show info such as: History of corner, with reference to Vol. and pg., dates, surveyor; exact description of monument replaced; if location computed, by taped or EDM traverse; landowner, remarks, etc.

SEAL:



CORNER SET IN 1833 BY
 HARVEY CARKE. IN 1882
 J.C. SCOTT LOCATED A STAKE
 IN A PILE OF STONES. I
 ACCEPTED A FENCE NORTH,
 SOUTH FOR EASTING. I USED
 THE NE CORNER AND A FENCE EAST/
 WEST, WEST OF CORNER FOR THE
 NORTHING. I VERIFIED ITS LOCATION
 USING EDM TRAVERSE OF AREA.

CERTIFIED CORRECT

Larry L. Austin
 Registered Land Surveyor

DATE: 4/6/97

TIE SKETCH

Show at least three (3) ties and monument

LEGEND

- ⊙ 3/4" X 24" IRON BAR SET
- 1/2" X 15" IRON BAR SET

XX EXISTING FENCE

