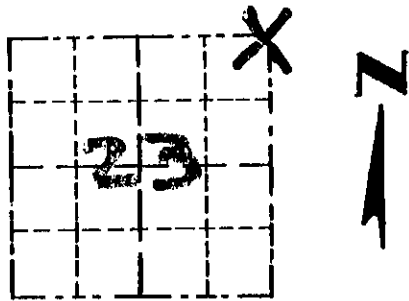


Survey Monument Record

TYPE OF MONUMENT 3/4" x 24" IRON BAR SET

CORNER NO. 63
 SECTION 23
 TOWN 7N
 RANGE 4W

FIELD BOOK: 97-02
 PAGE (13)



LOCATION
 (Indicated by "X")

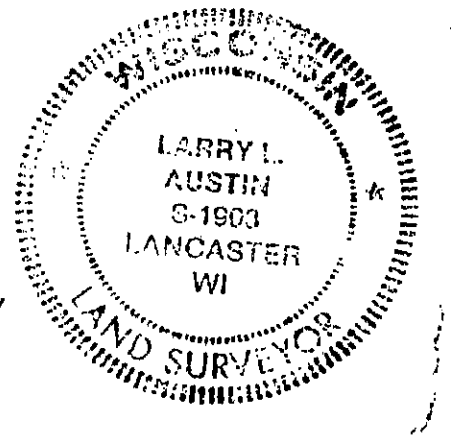
BASIS FOR MONUMENT LOCATION

(Use reverse side if necessary)

Show info such as: History of corner, with reference to Vol. and pg. dates, surveyor; exact description of monument replaced; if location computed, by taped or EDM traverse; landowner, remarks, etc.

CORNER SET IN 1833 BY HARVEY CLARKE. NO RECORD OF CORNER FOUND SINCE ORIGINAL SURVEY; CORNER WAS SET AT AN OCCUPIED FENCE CORNER. I ACCEPTED THIS LOCATION AFTER AN E.D.M. TRAVERSE OF AREA.

SEAL:



CERTIFIED CORRECT

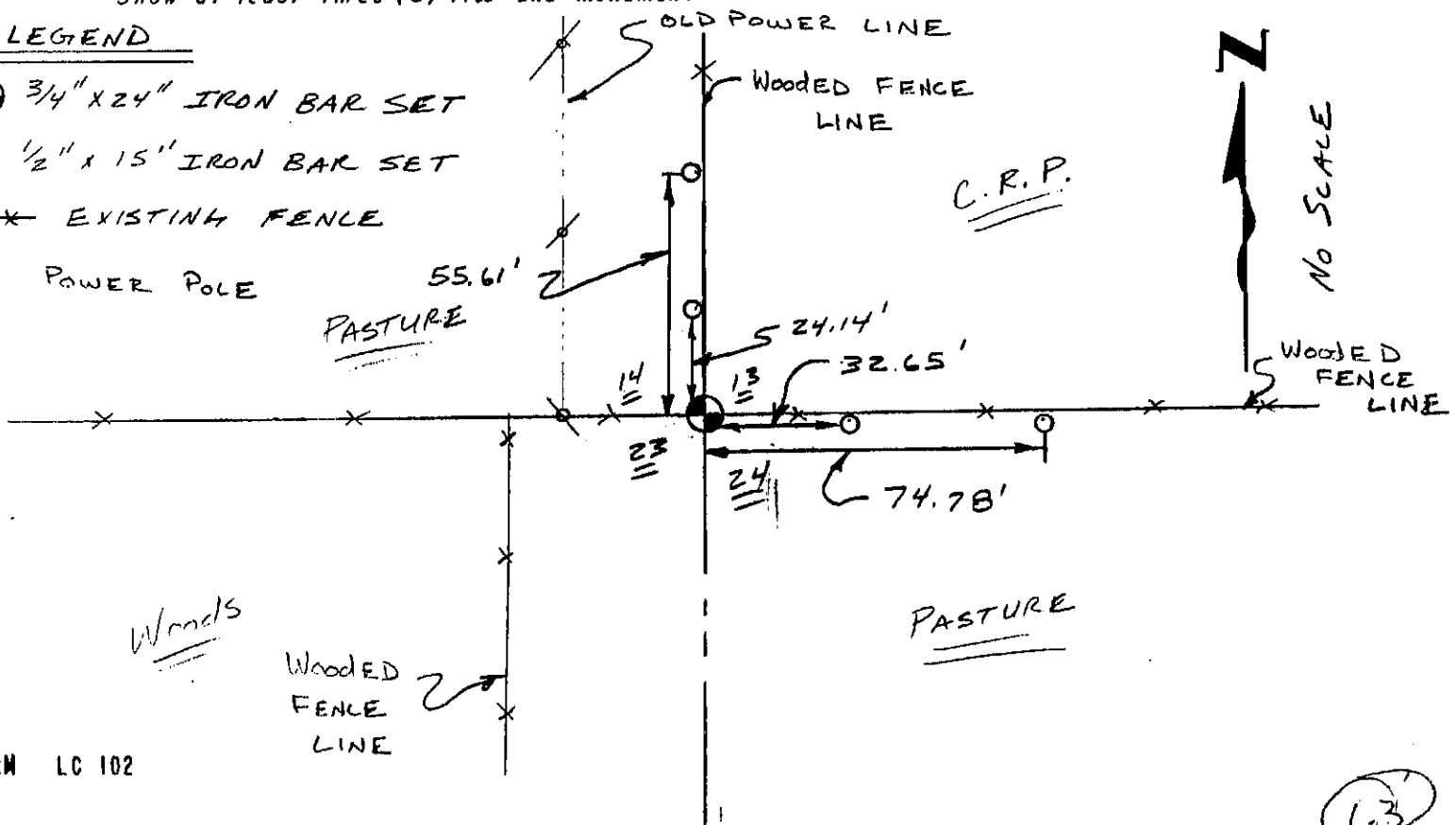
Larry L. Austin
 Registered Land Surveyor
 DATE: 2/4/97

TIE SKETCH

Show at least three (3) ties and monument

LEGEND

- ⊕ 3/4" x 24" IRON BAR SET
- 1/2" x 15" IRON BAR SET
- EXISTING FENCE
- ⊙ POWER POLE



(63)