

GRANT COUNTY CERTIFIED LAND CORNER

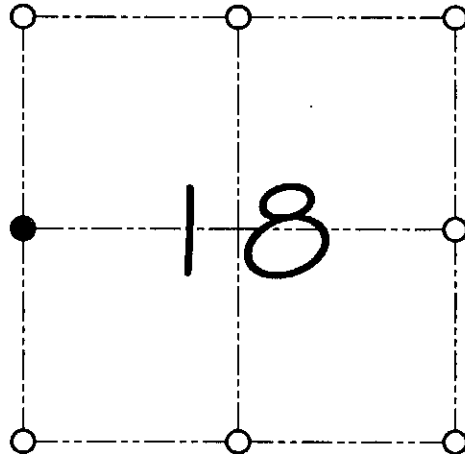
CORNER NUMBER 54

CERTIFICATE:

I, Larry L. Austin, do hereby certify that on the 11th day of April, 2000, I found no evidence of the West 1/4 corner of Section 18, Town 7 North, Range 3 West, of the 4th Principal Meridian, and I re-established said corner according to the Wisconsin statutes as shown and described hereon.

Dated this 21st day of April, 2000

Larry L. Austin
Larry L. Austin S-1903



● = CORNER LOCATION

WEST 1/4 CORNER OF
SECTION 18, T 7 N R 3 W
TOWN OF HICKORY GROVE

HISTORY OF ORIGINAL CORNER ESTABLISHMENT:

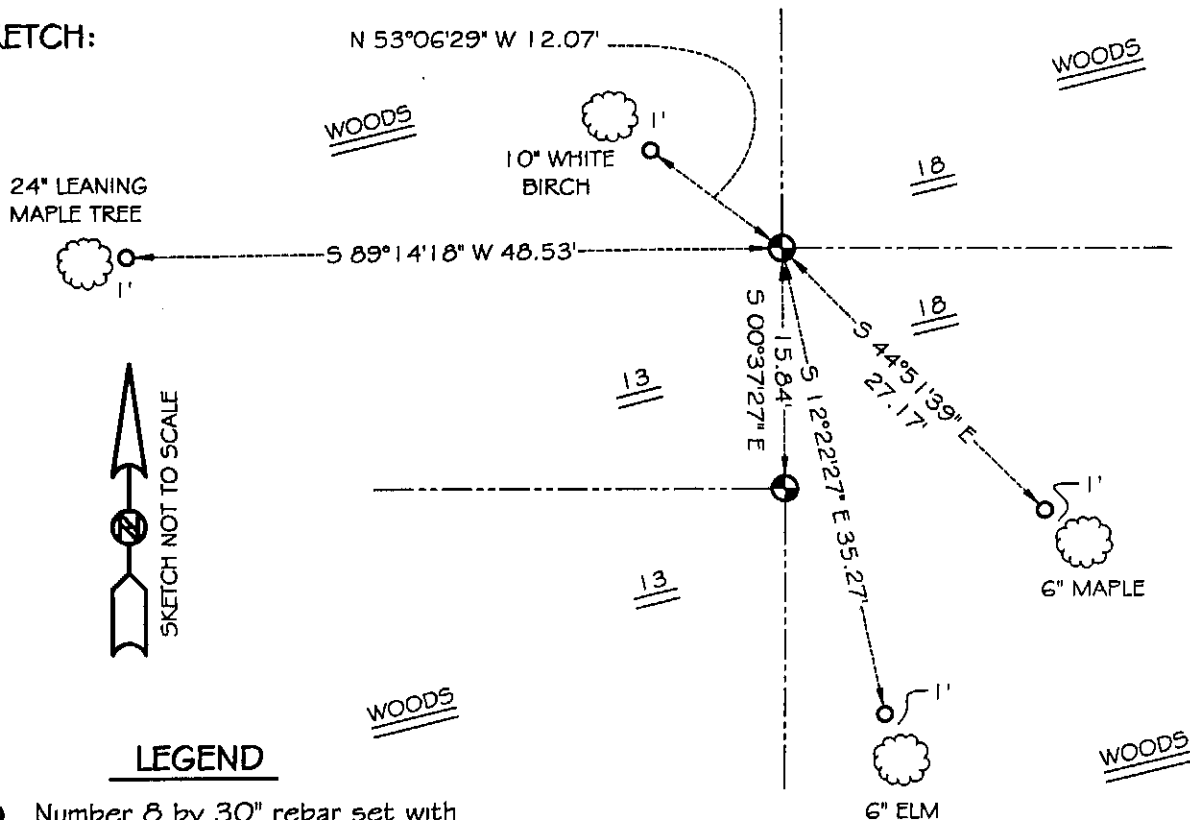
Corner was never originally set.
No other record of the corner was found.

DESCRIPTION OF CORNER EVIDENCE FOUND:

I set the corner at the proportioned offset from the East 1/4 of Section 13, T7N R4W. Verified it's location using E.D.M. & G.P.S. methods.

DESCRIPTION OF CORNER AND WITNESS MONUMENTS, references and accessories used to perpetuate the original or re-established location of this corner
WITNESS TO THE CORNER LOCATION: SHANE AUSTIN & BOBBY SEDGWICK

SKETCH:



LEGEND

- Number 8 by 30" rebar set with Grant County aluminum cap
- Number 4 by 24" rebar set with red plastic cap

* SEE SECTION SUMMARY FOR *
RELATIONSHIP TO AREA CORNERS

GRANT COUNTY CERTIFIED LAND CORNER

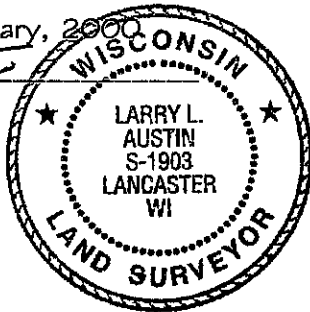
CORNER NUMBER 60

CERTIFICATE:

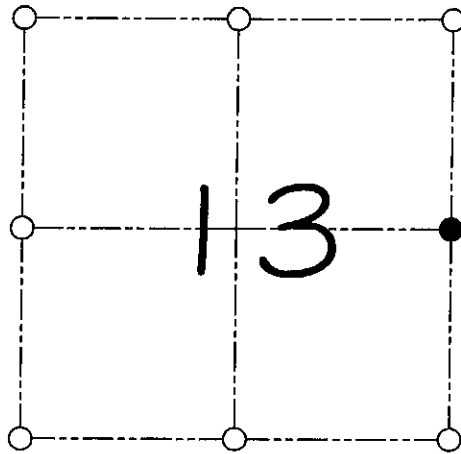
I, Larry L. Austin, do hereby certify that on the 8th day of February, 2000, I found no evidence of the East 1/4 corner of Section 13, Town 7 North, Range 4 West, of the 4th Principal Meridian, and I re-established said corner according to the Wisconsin statutes as shown and described hereon.

Dated this 16th day of February, 2000

Larry L. Austin
Larry L. Austin S-1903



SEAL



● = CORNER LOCATION

*EAST 1/4 CORNER OF
SECTION 13, T 7 N R 4 W
TOWN OF WOODMAN*

HISTORY OF ORIGINAL CORNER ESTABLISHMENT:

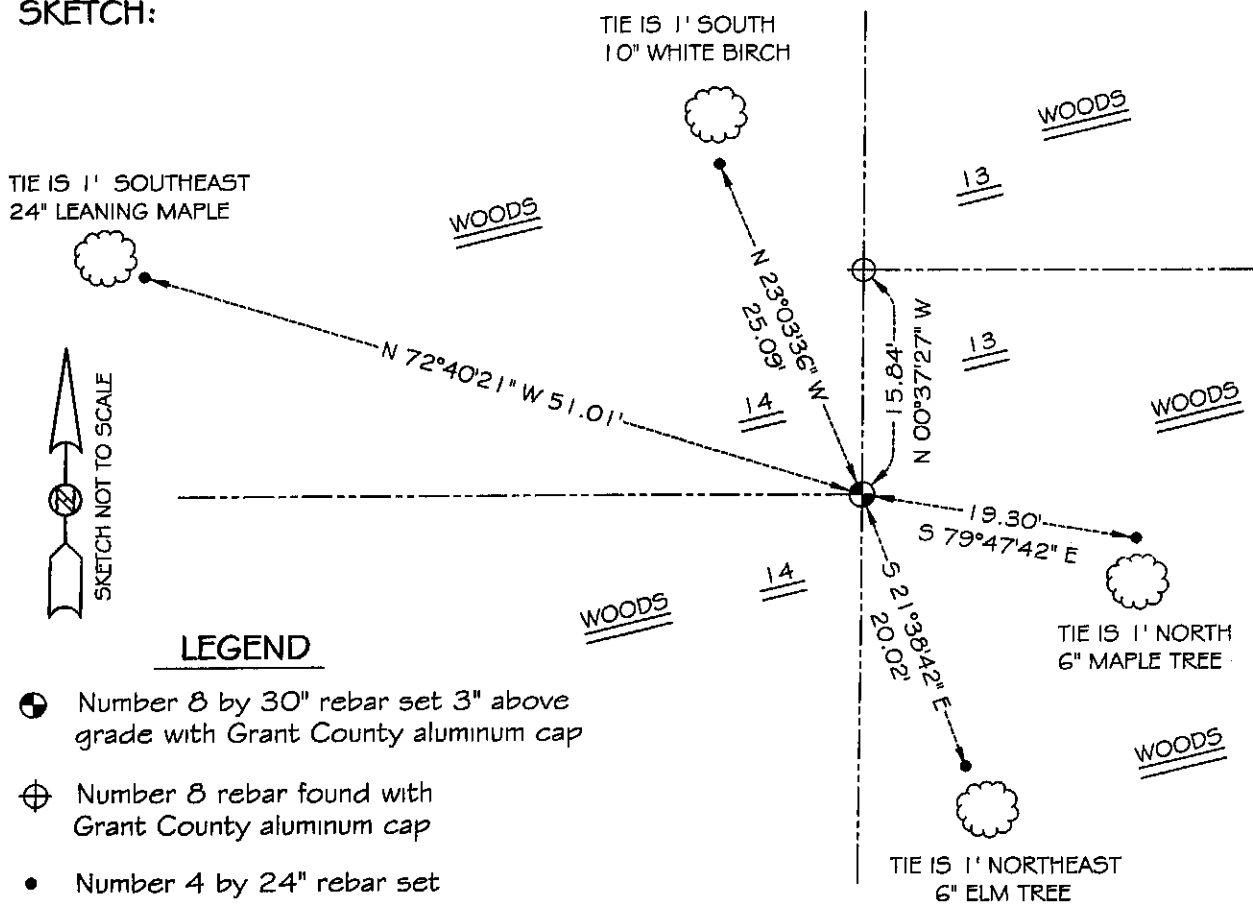
Corner was originally set in 1832 by Sibley.
No other record of the corner was found.

DESCRIPTION OF CORNER EVIDENCE FOUND:

I found no evidence to the location of the corner. I reset the corner
midway online between the Northeast and Southeast corners of Section 13.

DESCRIPTION OF CORNER AND WITNESS MONUMENTS, references and accessories used to perpetuate the original or re-established location of this corner
WITNESS TO THE CORNER LOCATION: SHANE AUSTIN & SHELBY BLINDERT

SKETCH:



LEGEND

- Number 8 by 30" rebar set 3" above grade with Grant County aluminum cap
- ⊕ Number 8 rebar found with Grant County aluminum cap
- Number 4 by 24" rebar set with red plastic cap

* SEE SECTION SUMMARY FOR *
RELATIONSHIP TO AREA CORNERS