

AUG 10 1999

# GRANT COUNTY CERTIFIED LAND CORNER

**CERTIFICATE:**

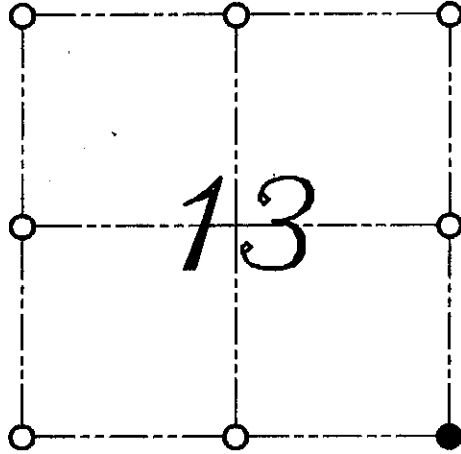
I, LARRY L. AUSTIN, DO HEREBY CERTIFY THAT ON NINETEENTH DAY OF JULY, 1999, I FOUND OCCUPATIONAL EVIDENCE OF THE SOUTHEAST CORNER SECTION 13, TOWN 7 NORTH, RANGE 4 WEST, OF THE FOURTH PRINCIPAL MERIDIAN, AND I RE-ESTABLISHED SAID CORNER ACCORDING TO THE WISCONSIN STATUTES AS SHOWN AND DESCRIBED HEREON.

DATED THIS TWENTY-FIRST DAY OF JULY, 1999

*Larry L. Austin*  
LARRY L. AUSTIN S-1903



CORNER NUMBER 61



● = CORNER LOCATION  
SOUTHEAST CORNER OF  
SECTION 13, T 7 N R 4 W  
TOWN OF WOODMAN

**HISTORY OF ORIGINAL CORNER ESTABLISHMENT:**

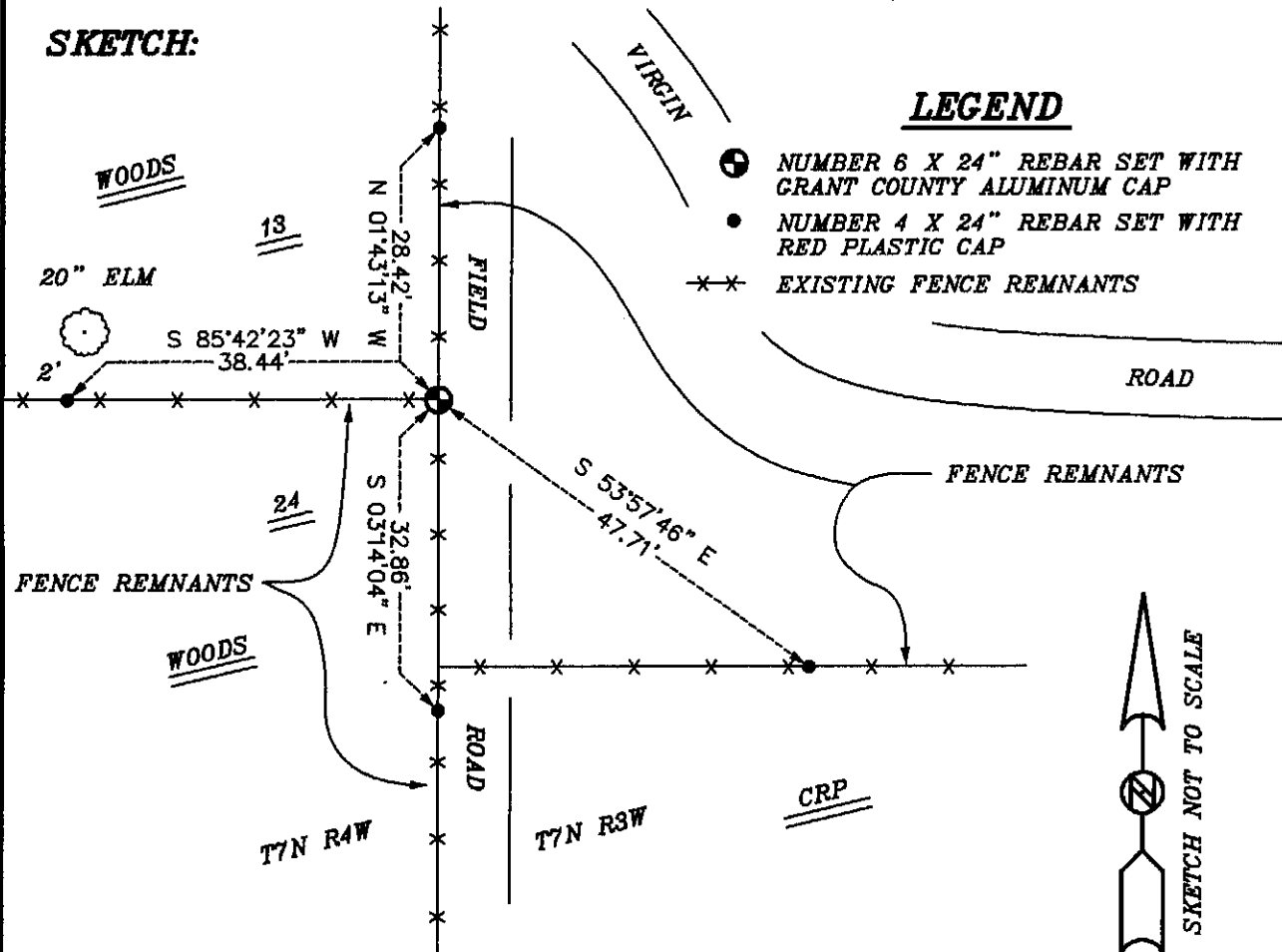
CORNER WAS SET IN 1832 BY SIBLEY. NO OTHER SURVEY RECORDS OF THE CORNER WERE FOUND.

**DESCRIPTION OF CORNER EVIDENCE FOUND:**

I SET THE CORNER BASED ON OCCUPATIONAL EVIDENCE. THIS LOCATION FIT WELL WITH OTHER AREA CORNERS. VERIFIED THIS LOCATION USING E.D.M. AND G.P.S. METHODS.

**DESCRIPTION OF CORNER AND WITNESS MONUMENTS, REFERENCES AND ACCESSORIES USED TO PERPETUATE THE ORIGINAL OR RE-ESTABLISHED LOCATION OF THIS CORNER:**  
WITNESS TO THE CORNER LOCATION: BOBBY SEDGWICK ; SHELBY BLINDERT

**SKETCH:**



**LEGEND**

- NUMBER 6 X 24" REBAR SET WITH GRANT COUNTY ALUMINUM CAP
- NUMBER 4 X 24" REBAR SET WITH RED PLASTIC CAP
- \*\* EXISTING FENCE REMNANTS

