

U.S. PUBLIC LAND SURVEY MONUMENT RECORD - GRANT COUNTY, WI

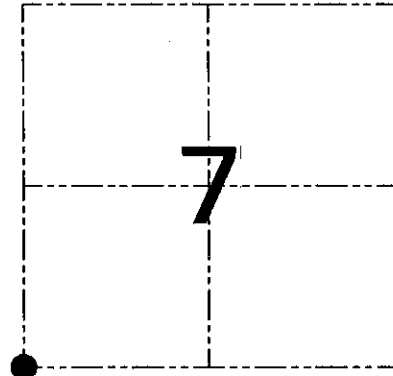
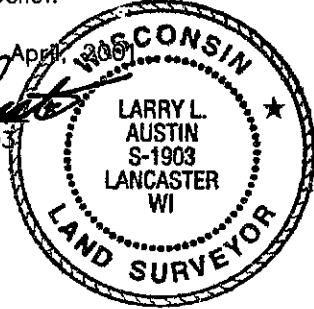
Section 7, Town 7 North Range 3 West, Town of Marion

CERTIFICATE

I, Larry L. Austin, do hereby certify that the corner location on this record was determined by me and/or under my direct supervision and that this U.S. public land survey monument record is correct and complete to the best of my knowledge and belief.

Dated this 11th day of April, 2007

Larry L. Austin
Larry L. Austin S-1903



● = CORNER LOCATION

HISTORY OF CORNER ESTABLISHMENT

Corner was originally set in 1833 by Harvey Parke. In 1892 Sampson found the original corner. Bearing trees were decayed and he set a stake. No other record of the corner was found.

DESCRIPTION OF CORNER EVIDENCE FOUND

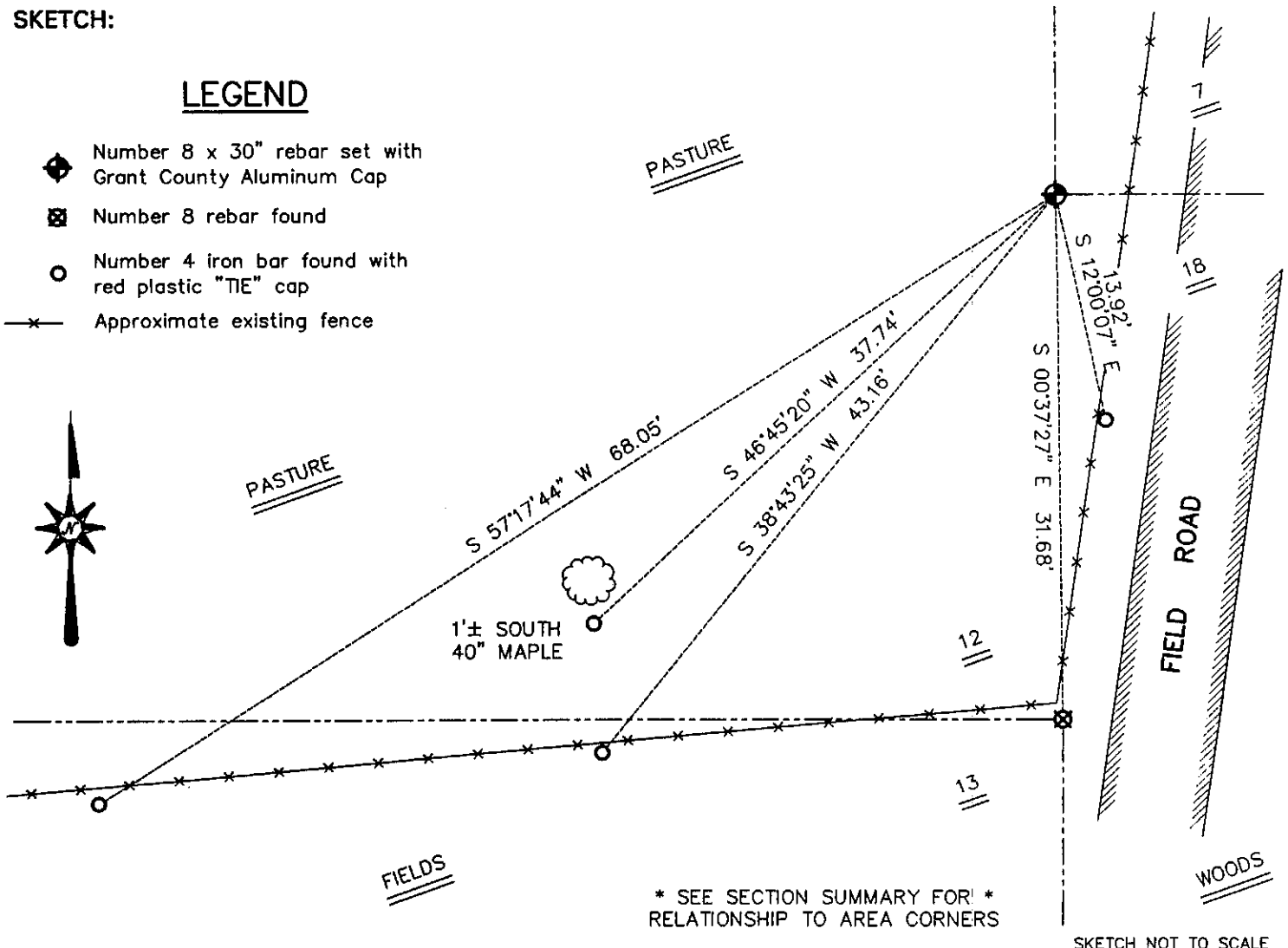
I found no evidence to the location of the corner. I reset the corner at the recorded offset from the Southeast corner of Section 12. Verified this location using EDM & GPS methods.

DESCRIPTION OF CORNER AND WITNESS MONUMENTS, references and accessories used to perpetuate the original or re-established location of this corner. Witnesses to the corner location Bobby Sedgwick & Shelby Blindert & Shane Austin & Tim Fauver.

SKETCH:

LEGEND

- ◆ Number 8 x 30" rebar set with Grant County Aluminum Cap
- ⊠ Number 8 rebar found
- Number 4 iron bar found with red plastic "TIE" cap
- ✕ Approximate existing fence



* SEE SECTION SUMMARY FOR *
RELATIONSHIP TO AREA CORNERS

SKETCH NOT TO SCALE

AUSTIN ENGINEERING, LLC

4211 HWY 81 EAST, LANCASTER, WI 53813
PHONE 608-723-6363 FAX 608-723-6702

FIELDBOOK: SDR33, 2040
G: \T7NR4W\13
C: \SWA\TIE\T7NR3W\53
CREW: BS-SB-SA-TF

DRAWN BY: SW AUSTIN
APPROVED: LL AUSTIN

CORNER NUMBER 53

GRANT COUNTY CERTIFIED LAND CORNER

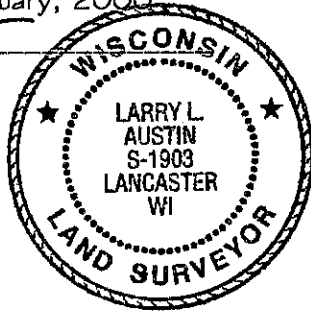
CORNER NUMBER 41

CERTIFICATE:

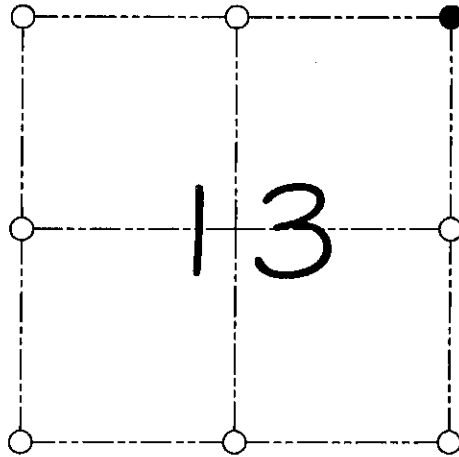
I, Larry L. Austin, do hereby certify that on the 8th day of February, 2000, I found evidence of the Northeast corner of Section 13, Town 7 North, Range 4 West, of the 4th Principal Meridian, and I re-established said corner according to the Wisconsin statutes as shown and described hereon.

Dated this 16th day of February, 2000

Larry L. Austin
Larry L. Austin S-1903



SEAL



● = CORNER LOCATION

**NORTHEAST CORNER OF
SECTION 13, T 7 N R 4 W
TOWN OF WOODMAN**

HISTORY OF ORIGINAL CORNER ESTABLISHMENT:

Corner was originally set in 1832 by Sibley.
No other record of the corner was found.

DESCRIPTION OF CORNER EVIDENCE FOUND:

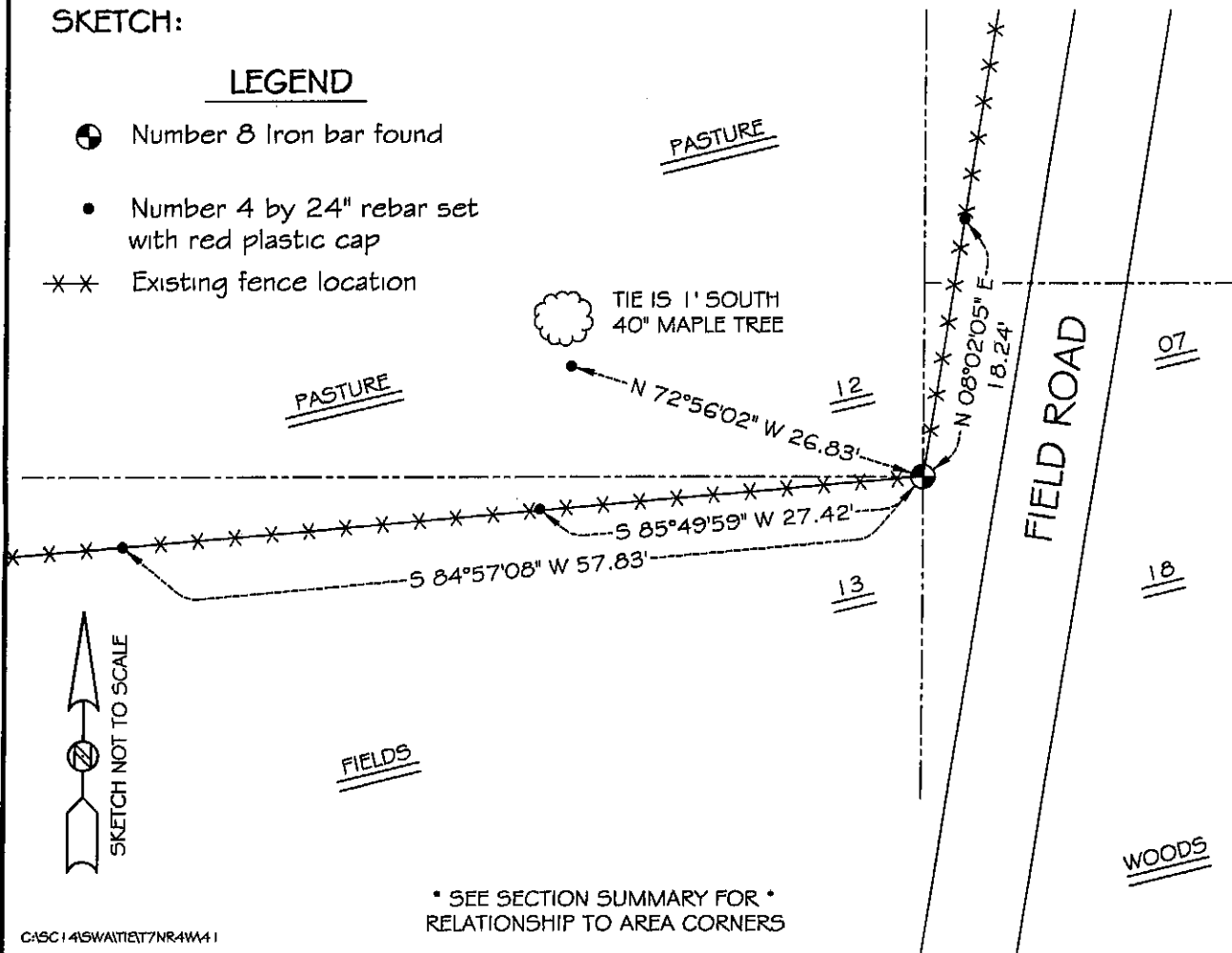
I found an existing 1" iron bar and accepted it's location
after an E.D.M. and G.P.S. traverse of the area.

DESCRIPTION OF CORNER AND WITNESS MONUMENTS, references and accessories used to perpetuate the original or re-established location of this corner
WITNESS TO THE CORNER LOCATION: SHANE AUSTIN & SHELBY BLINDERT

SKETCH:

LEGEND

- Number 8 Iron bar found
- Number 4 by 24" rebar set with red plastic cap
- ×× Existing fence location



* SEE SECTION SUMMARY FOR *
RELATIONSHIP TO AREA CORNERS