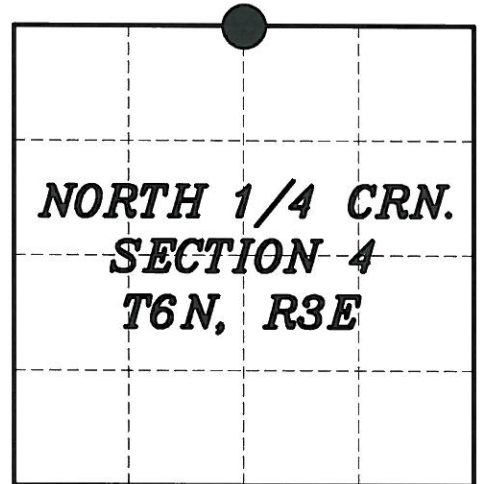


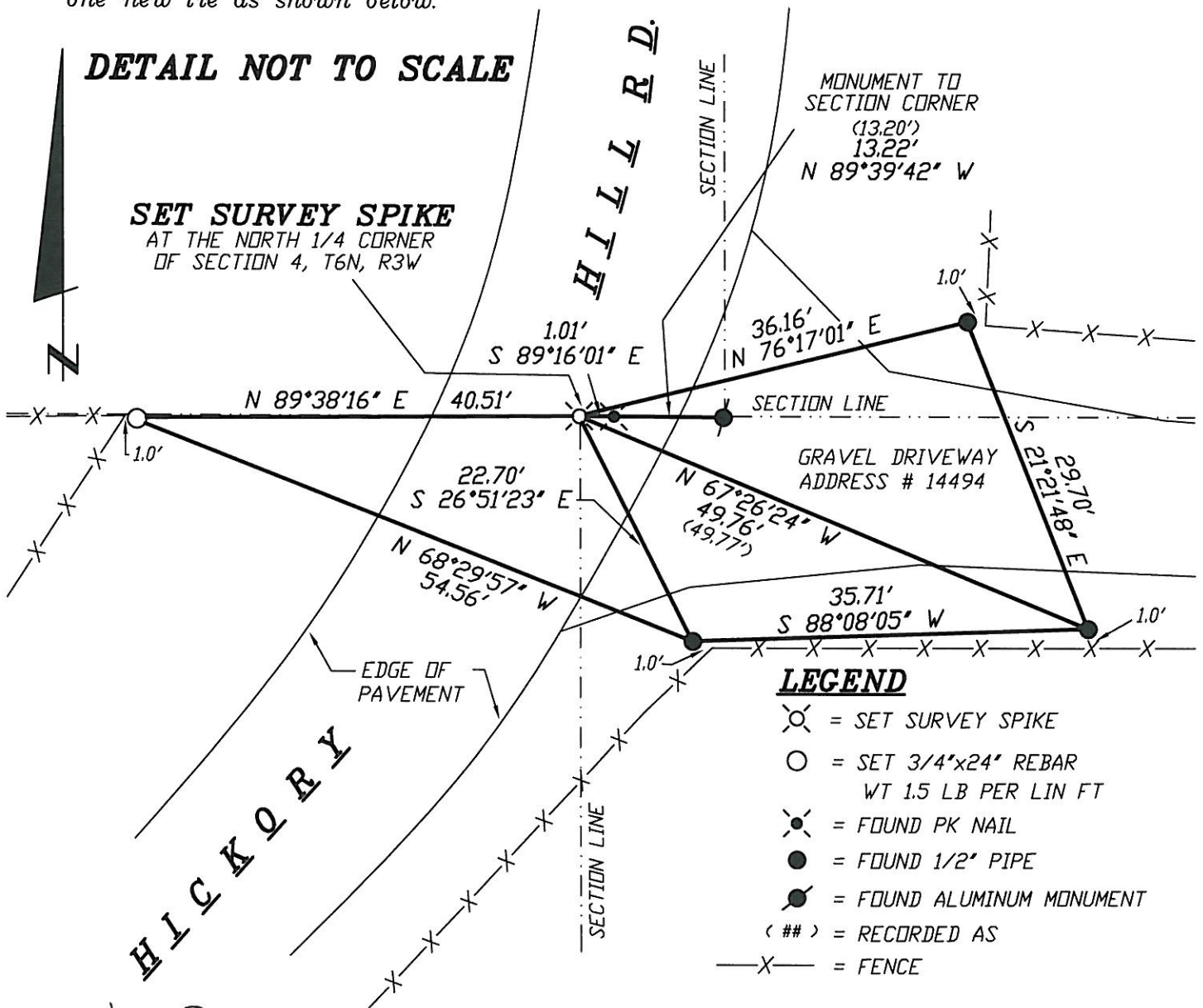
U. S. PUBLIC LAND SURVEY MONUMENT RECORD

NORTH 1/4 Corner of Section 4
 Township 6 North, Range 3 East
 Town of MOUNT IDA
 GRANT County

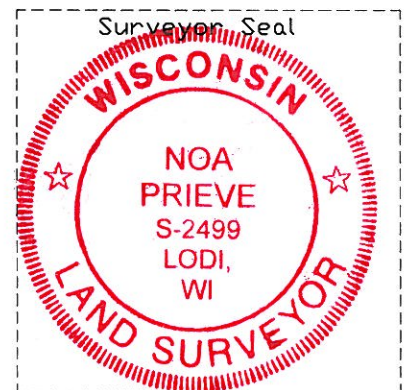


DESCRIPTION OF EVIDENCE:

Found no evidence of the aluminum cap monument set by Austin Engineering's tie sheet dated 4-10-07. Found 4 of the 5 ties to reestablish the corner and set one new tie as shown below.



I, NOA PRIEVE, certify that the corner location shown on this record was determined by me or under my direction and control and that this U.S. Public Land Survey Monument Record is correct and complete to the best of my knowledge and belief.



[Signature]
 Signature

FEB. 24, 2014
 Date

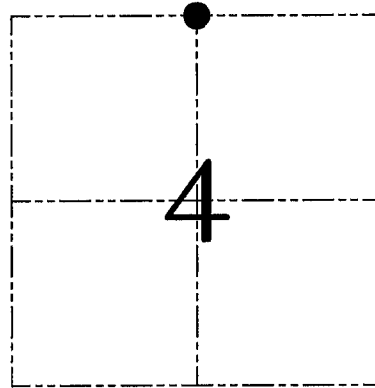
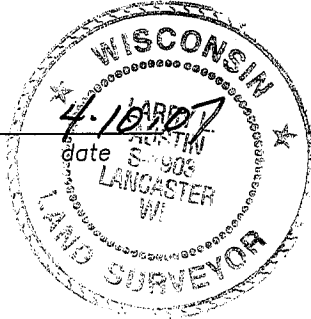
U.S. PUBLIC LAND SURVEY MONUMENT RECORD – GRANT COUNTY, WI

Section 4, Town 6 North Range 3 West, Town of Mount Ida

CERTIFICATE

I, Larry L. Austin, do hereby certify that the corner location on this record was determined by me and/or under my direct supervision and that this U.S. public land survey monument record is correct and complete to the best of my knowledge and belief.

Larry L. Austin
Larry L. Austin, S-1903



● = CORNER LOCATION

HISTORY OF CORNER ESTABLISHMENT

Corner was never originally set.
No other record of the corner was found.

DESCRIPTION OF CORNER EVIDENCE FOUND

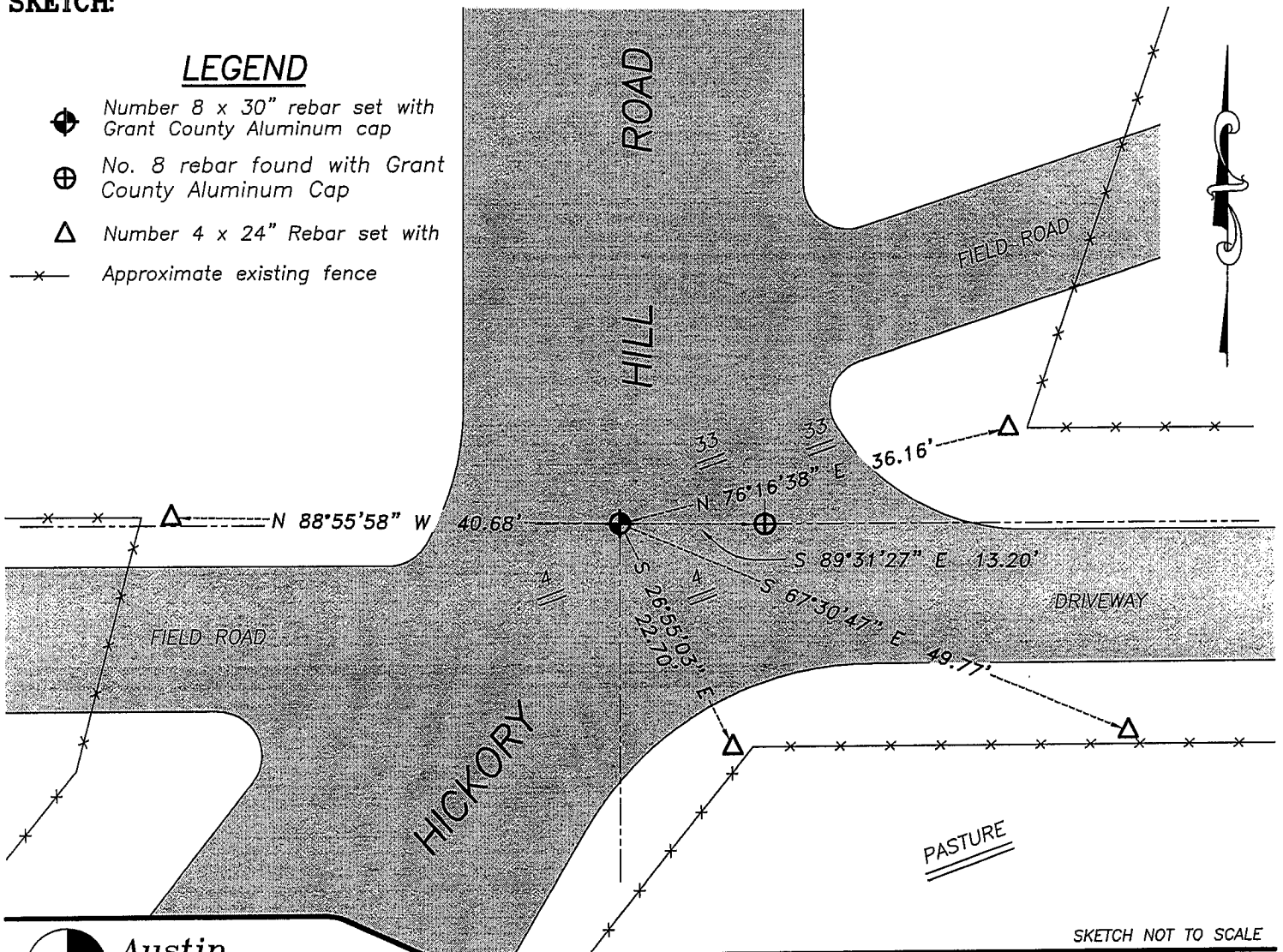
I set the corner at the proportioned offset from the existing South 1/4 of Section 33, T7N R3W. Verified this location using EDM & GPS methods.

DESCRIPTION OF CORNER AND WITNESS MONUMENTS, references and accessories used to perpetuate the original or re-established location of this corner. Witnesses to corner location Bobby Sedgwick & Brad Digman & Shelby Blindert

SKETCH:

LEGEND

- ⊕ Number 8 x 30" rebar set with Grant County Aluminum cap
- ⊕ No. 8 rebar found with Grant County Aluminum Cap
- △ Number 4 x 24" Rebar set with
- x— Approximate existing fence



SKETCH NOT TO SCALE

Austin Engineering LLC

4211 HWY 81 E, LANCASTER, WI 53813
PHONE 608-723-6363 FAX 608-723-6702

JOB NUMBER 06S305
FIELDBOOK: TDSR, 2700
G:\T6NR3W\09
H:\TIE\T6NR3W\08

DRAWN BY: SW AUSTIN
APPROVED: LL AUSTIN

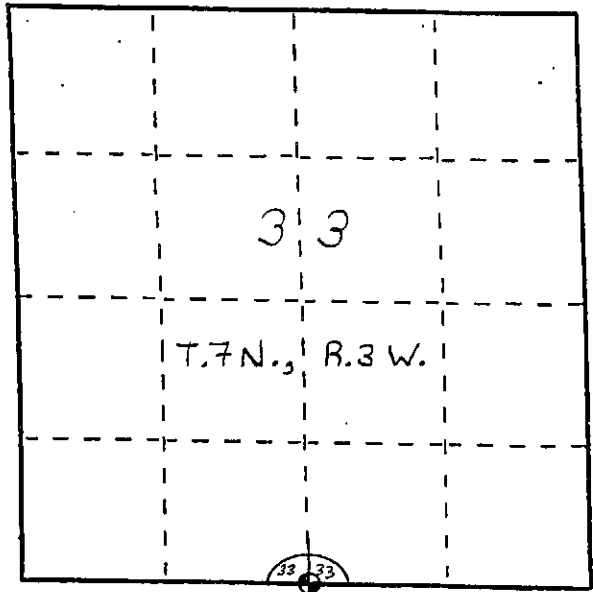
U. S. PUBLIC LAND SURVEY MONUMENT RECORD

INSTRUCTIONS: This record shall show the location of the corner and shall include all of the following nine elements (a through i).

- (a) Identify the corner by reference to the U.S. public land survey system.
- = Corner monument restored.

The South Quarter Corner
of Section 33, Tawn 7 North,
Range 3 West, Marion Township,
Grant County, Wisconsin.
Grant County Coordinates

N = 590,732.55'
E = 812,363.52'

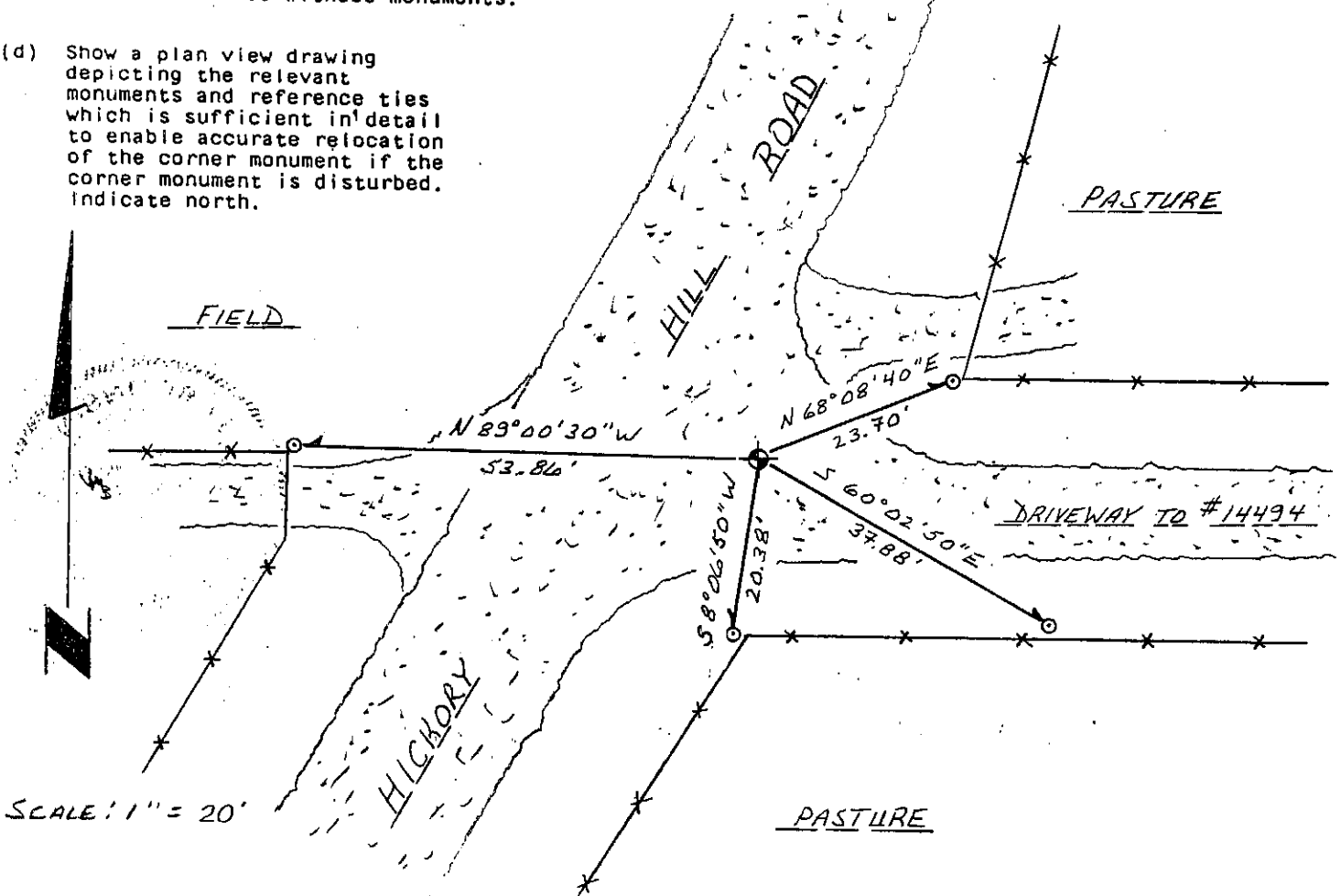


- (b) Describe any record evidence, monument evidence, occupational evidence, testimonial evidence or any other material evidence you considered, and whether the monument was found or placed.

I set a 1" dia. x 30" rebar with a Grant County aluminum cap from existing physical evidence of fence lines to the North, East and West. This location was verified by proportionate measurements to existing evidence in Section 33.

- (c) In the plan view drawing below, provide reference ties to at least 4 witness monuments, or, if the location is within a municipality, to at least 2 witness monuments. (Witness monuments shall be made of concrete, natural stone, iron or other equally durable material. Describe witness monuments.)

- (d) Show a plan view drawing depicting the relevant monuments and reference ties which is sufficient in detail to enable accurate relocation of the corner monument if the corner monument is disturbed. Indicate north.



(e) Describe any material discrepancy between the location of the corner as restored or reestablished and the location of that corner as previously restored or reestablished by distance and direction. Show the discrepancy on the plan view drawing under (d), above. Show the distances between the corner as previously restored or reestablished and (1) the corner as restored or reestablished, and (2) to at least 2 of the witness monuments shown on the drawing in (d), above.

No.

(f) Was the corner restored through acceptance of (1) an obliterated evidence location, or, (2) a found perpetuated location?

An obliterated evidence location.

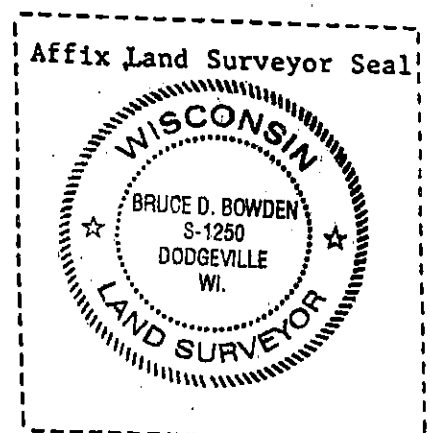
(g&h) Was the corner reestablished through lost corner proportionate methods? If so, show the method, including the directions and distances to other public land survey corners used as evidence or used for proportioning in determining the corner location?

No.

(1) I, Bruce D. Bowden
(type or print name) certify that the corner location shown on this record was determined by me or under my direction and control and that this U.S. Public Land Survey Monument Record is correct and complete to the best of my knowledge and belief.

Signature

Date



Bruce D. Bowden April 15, 2004