

# GRANT COUNTY CERTIFIED LAND CORNER

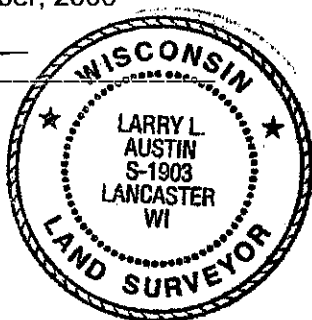
CORNER NUMBER 130

**CERTIFICATE:**

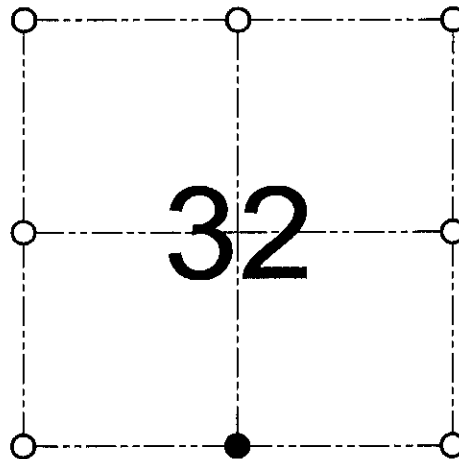
I, Larry L. Austin, do hereby certify that on the 28th day of August, 2000, I found evidence of the South 1/4 corner of Section 32, Town 7 North, Range 3 West, of the 4th Principal Meridian, and I re-established said corner according to the Wisconsin statutes as shown and described hereon.

Dated this 19th day of December, 2000

*Larry L. Austin*  
Larry L. Austin S-1903



SEAL



● = CORNER LOCATION

SOUTH 1/4 CORNER OF  
SECTION 32, T 7 N R 3 W  
TOWN OF MARION

**HISTORY OF ORIGINAL CORNER ESTABLISHMENT:**

Corner was originally set in 1832 by Sibley.  
In 1890 Gould found the original bearing trees in good order.

**DESCRIPTION OF CORNER EVIDENCE FOUND:**

I was unable to locate the bearing trees. I did find an occupied location of the North 1/4 of Section 5. I set the corner at the proportioned offset from the occupied North 1/4 of Section 5. Verified this location using EDM & GPS methods.

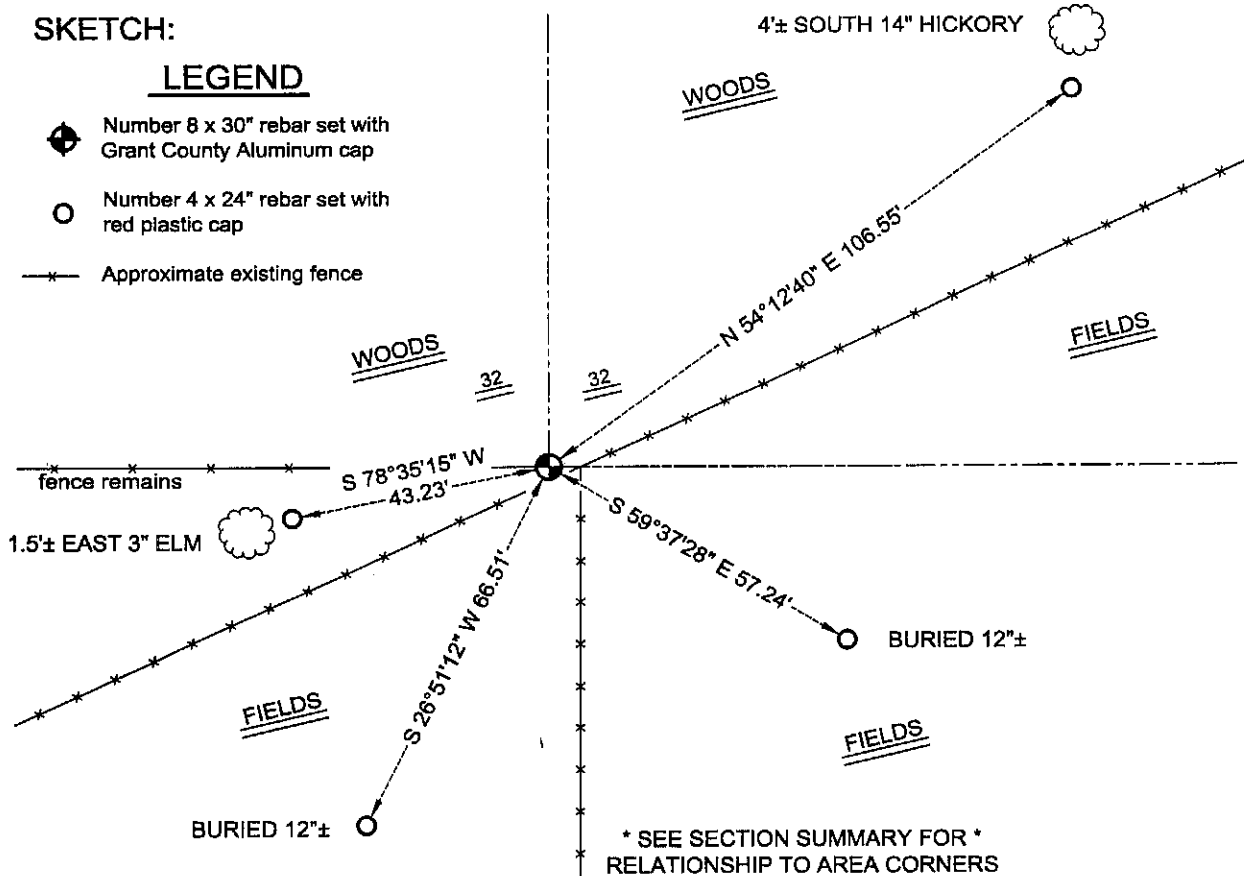
**DESCRIPTION OF CORNER AND WITNESS MONUMENTS, references and accessories used to perpetuate the original or re-established location of this corner**

WITNESS TO THE CORNER LOCATION: SHANE AUSTIN & SHELBY BLINDERT & BOBBY SEDGWICK

**SKETCH:**

LEGEND

- ◆ Number 8 x 30" rebar set with Grant County Aluminum cap
- Number 4 x 24" rebar set with red plastic cap
- \*— Approximate existing fence



\* SEE SECTION SUMMARY FOR \*  
RELATIONSHIP TO AREA CORNERS

**AUSTIN ENGINEERING, LLC**  
4211 HWY 81 E, LANCASTER, WI 53813  
PHONE 608-723-6363 FAX 608-723-6702

FIELDBOOK: SDR33, 9914  
G:\T7NR3W\19  
C:\SC14\SWA\TIE\T6NR3W\12

DRAWN BY: SW AUSTIN  
APPROVED: LL AUSTIN  
CREW: BS - SB - SA - TF