

GRANT COUNTY CERTIFIED LAND CORNER

CORNER NUMBER 115

CERTIFICATE:

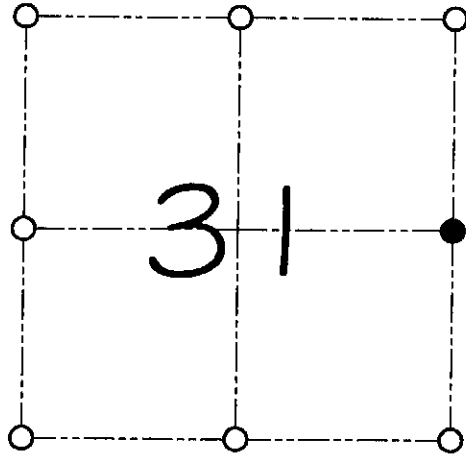
I, Larry L. Austin, do hereby certify that on the 14th day of June, 2000, I found evidence of the East 1/4 corner of Section 31, Town 7 North, Range 3 West, of the 4th Principal Meridian, and I re-established said corner according to the Wisconsin statutes as shown and described hereon.

Dated this 23th day of October, 2000

Larry L. Austin
Larry L. Austin 5-1903



SEAL



● = CORNER LOCATION

EAST 1/4 CORNER OF
SECTION 31, T 7 N R 3 W
TOWN OF MARION

HISTORY OF ORIGINAL CORNER ESTABLISHMENT:

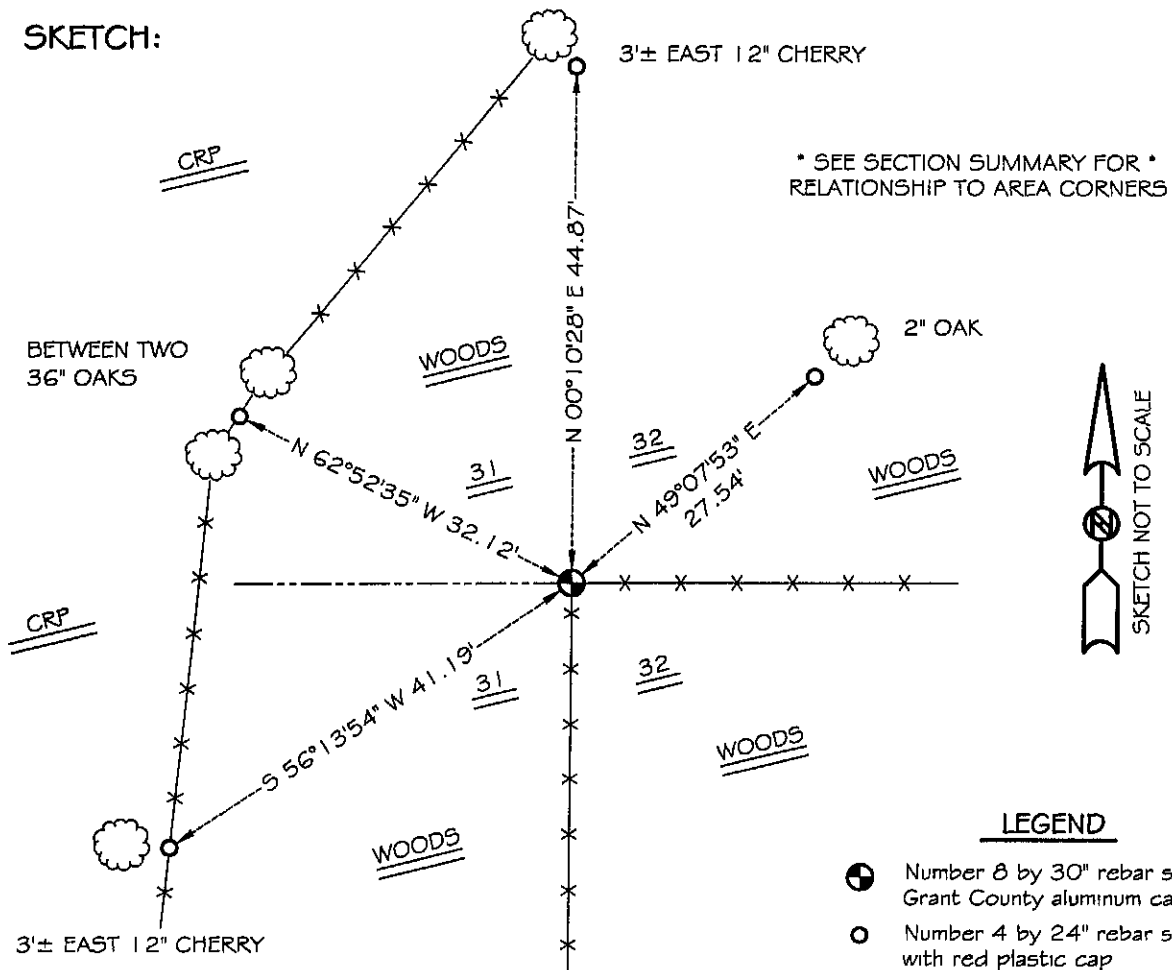
Corner was originally set in 1833 by Parke.
In 1880 Joel Barber tied to the corner.

DESCRIPTION OF CORNER EVIDENCE FOUND:

I found an occupied fence corner and accepted it's location
after an E.D.M. & G.P.S. traverse of the area.

DESCRIPTION OF CORNER AND WITNESS MONUMENTS, references and accessories used to perpetuate the original or re-established location of this corner
WITNESS TO THE CORNER LOCATION: SHANE AUSTIN & BOBBY SEDGWICK

SKETCH:



LEGEND

- Number 8 by 30" rebar set with Grant County aluminum cap
- Number 4 by 24" rebar set with red plastic cap
- x- Existing fence location