

GRANT COUNTY CERTIFIED LAND CORNER

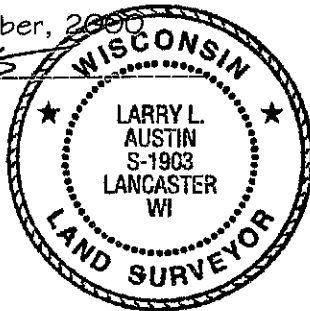
CORNER NUMBER 132

CERTIFICATE:

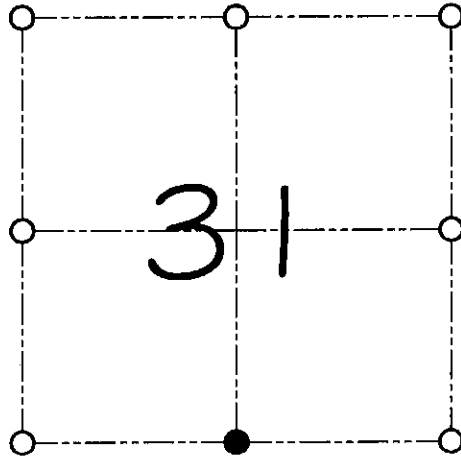
I, Larry L. Austin, do hereby certify that on the 15th day of June, 2000, I found no evidence of the South 1/4 corner of Section 31, Town 7 North, Range 3 West, of the 4th Principal Meridian, and I re-established said corner according to the Wisconsin statutes as shown and described hereon.

Dated this 20th day of October, 2000

Larry L. Austin
Larry L. Austin S-1903



SEAL



● = CORNER LOCATION

SOUTH 1/4 CORNER OF
SECTION 31, T 7 N R 3 W
TOWN OF MARION

HISTORY OF ORIGINAL CORNER ESTABLISHMENT:

Corner was originally set in 1832 by Sibley.
In 1880 Joel Barber tied to this corner.

DESCRIPTION OF CORNER EVIDENCE FOUND:

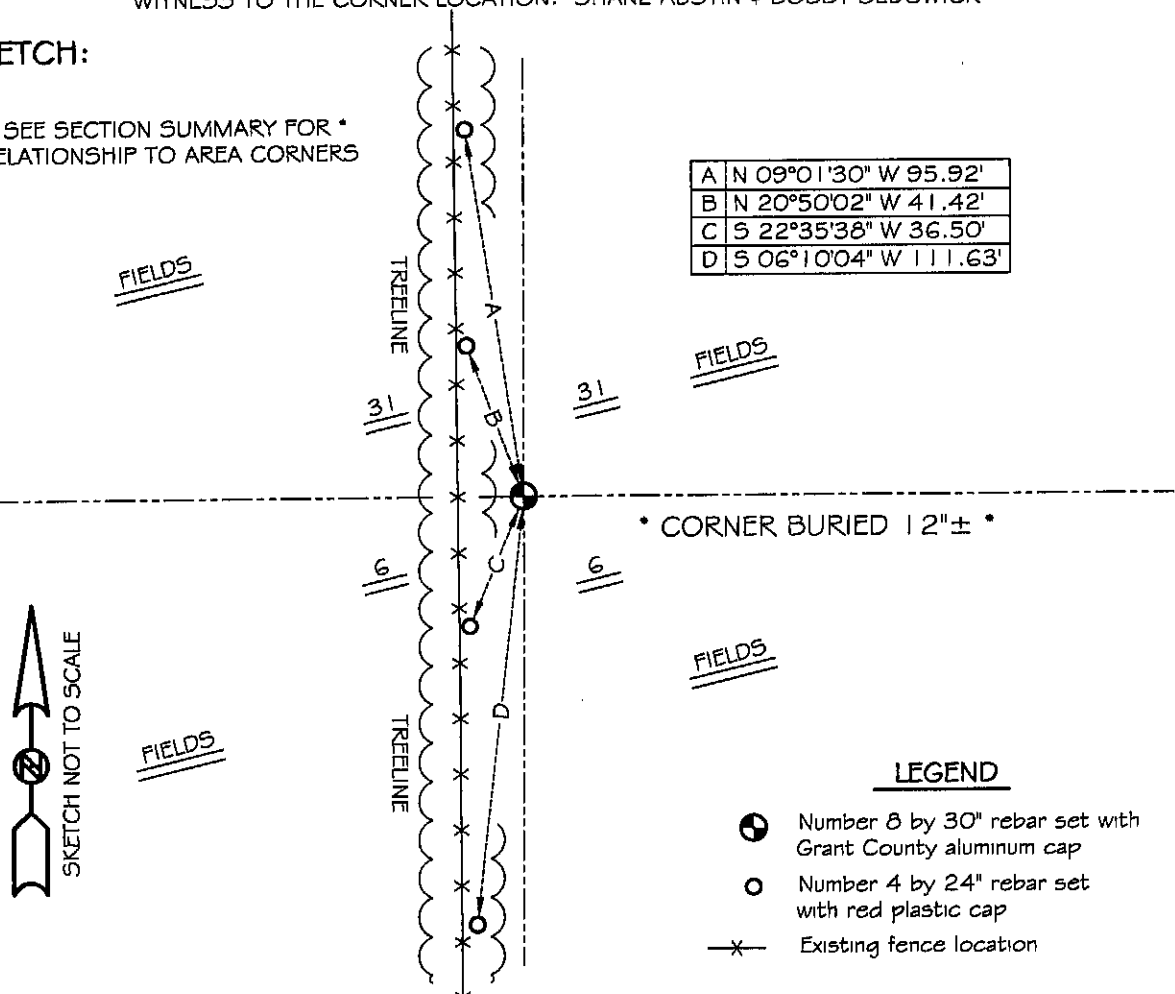
I reset the corner proportionately between the Southwest & Southeast corners of Section 31. Verified this location using E.D.M. & G.P.S. methods.

DESCRIPTION OF CORNER AND WITNESS MONUMENTS, references and accessories used to perpetuate the original or re-established location of this corner
WITNESS TO THE CORNER LOCATION: SHANE AUSTIN & BOBBY SEDGWICK

SKETCH:

* SEE SECTION SUMMARY FOR *
RELATIONSHIP TO AREA CORNERS

A	N 09°01'30" W	95.92'
B	N 20°50'02" W	41.42'
C	S 22°35'38" W	36.50'
D	S 06°10'04" W	111.63'



* CORNER BURIED 12" ± *



LEGEND

- Number 8 by 30" rebar set with Grant County aluminum cap
- Number 4 by 24" rebar set with red plastic cap
- ✕ Existing fence location

GRANT COUNTY CERTIFIED LAND CORNER

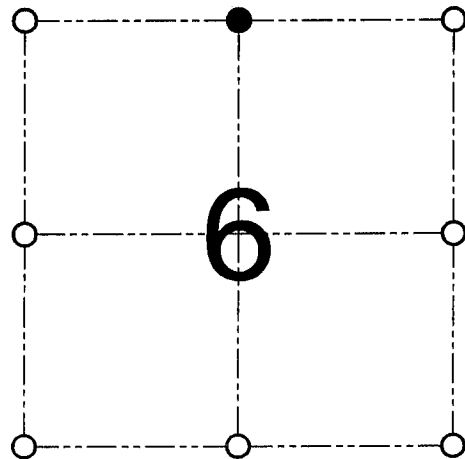
CORNER NUMBER 12

CERTIFICATE:

I, Larry L. Austin, do hereby certify that on the 15th day of June, 2000, I found no evidence of the North 1/4 corner of Section 6, Town 6 North, Range 3 West, of the 4th Principal Meridian, and I re-established said corner according to the Wisconsin statutes as shown and described hereon.

Dated this 19th day of December, 2000

Larry L. Austin
Larry L. Austin S-1903



● = CORNER LOCATION
NORTH 1/4 CORNER OF SECTION 6, T 6 N R 3 W TOWN OF MOUNT IDA

HISTORY OF ORIGINAL CORNER ESTABLISHMENT:

Corner was never originally set.
In 1909 J.C. Scott tied to the corner.

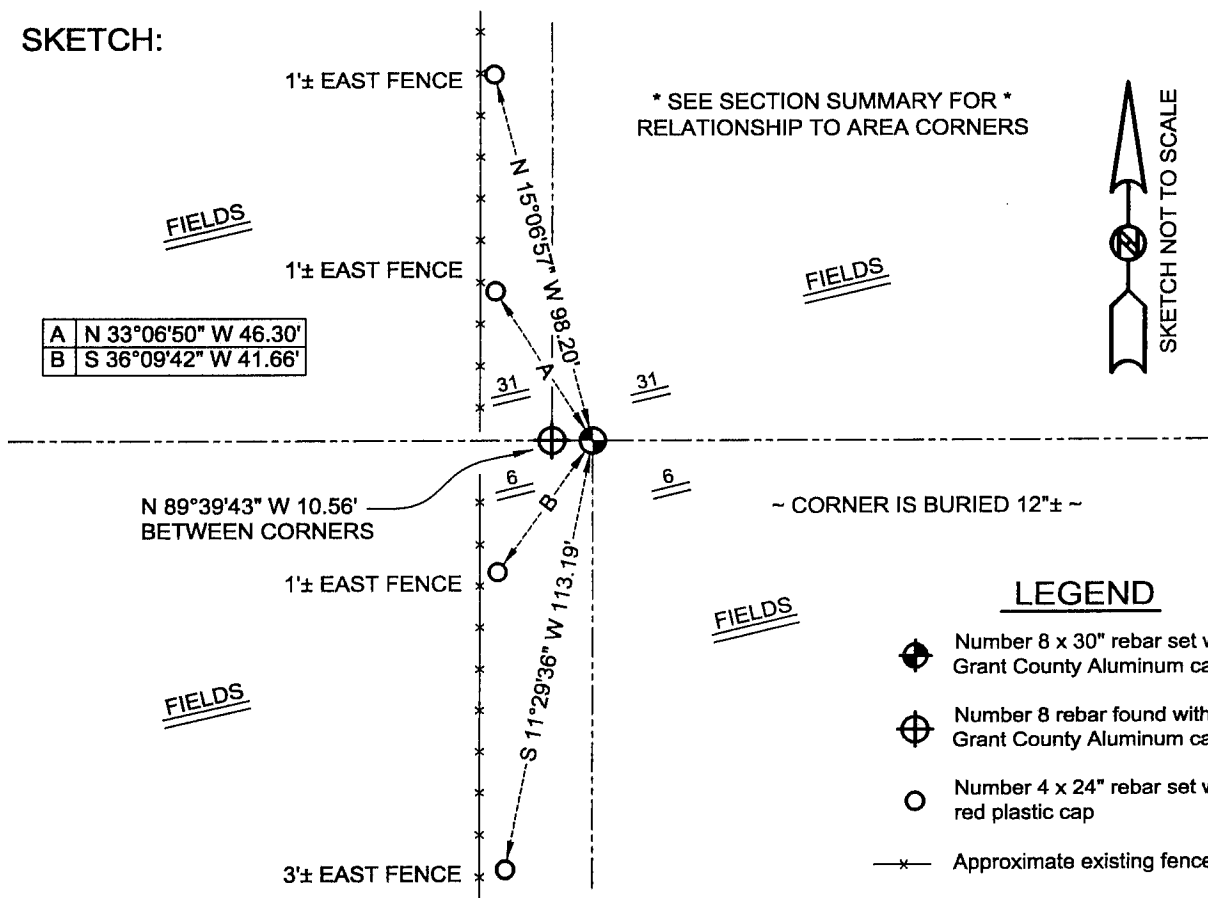
DESCRIPTION OF CORNER EVIDENCE FOUND:

I found the existing South 1/4 of Section 31 and set the North 1/4 of Section 6 at the recorded offset. Verified this location using EDM & GPS methods.

DESCRIPTION OF CORNER AND WITNESS MONUMENTS, references and accessories used to perpetuate the original or re-established location of this corner

WITNESS TO THE CORNER LOCATION: SHANE AUSTIN & BOBBY SEDGWICK

SKETCH:



LEGEND

- Number 8 x 30" rebar set with Grant County Aluminum cap
- Number 8 rebar found with Grant County Aluminum cap
- Number 4 x 24" rebar set with red plastic cap
- Approximate existing fence

AUSTIN ENGINEERING, LLC
4211 HWY 81 E, LANCASTER, WI 53813
PHONE 608-723-6363 FAX 608-723-6702

FIELDBOOK: SDR33, 9914
G:\T7NR3W\19
C:\SC14\SWA\TIE\T6NR3W\12

DRAWN BY: SW AUSTIN
APPROVED: LL AUSTIN
CREW: BS - SB - SA - TF