

GRANT COUNTY CERTIFIED LAND CORNER

CORNER NUMBER 131

CERTIFICATE:

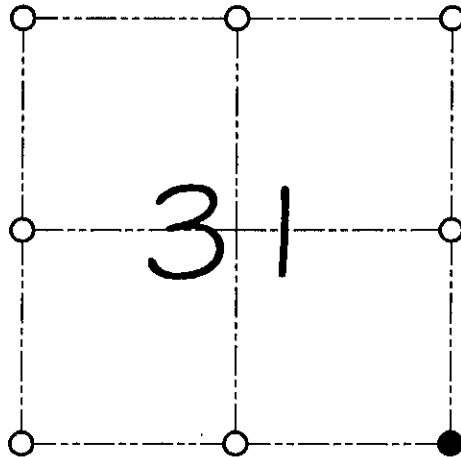
I, Larry L. Austin, do hereby certify that on the 15th day of June, 2000, I found evidence of the Southeast corner of Section 31, Town 7 North, Range 3 West, of the 4th Principal Meridian, and I re-established said corner according to the Wisconsin statutes as shown and described hereon.

Dated this 20th day of October, 2000

Larry L. Austin
Larry L. Austin S-1903



SEAL



● = CORNER LOCATION

SOUTHEAST CORNER OF
SECTION 31, T 7 N R. 3 W
TOWN OF MARION

HISTORY OF ORIGINAL CORNER ESTABLISHMENT:

Corner was set in 1832 by Sibley.
In 1880 Joel Barber tied to the corner.

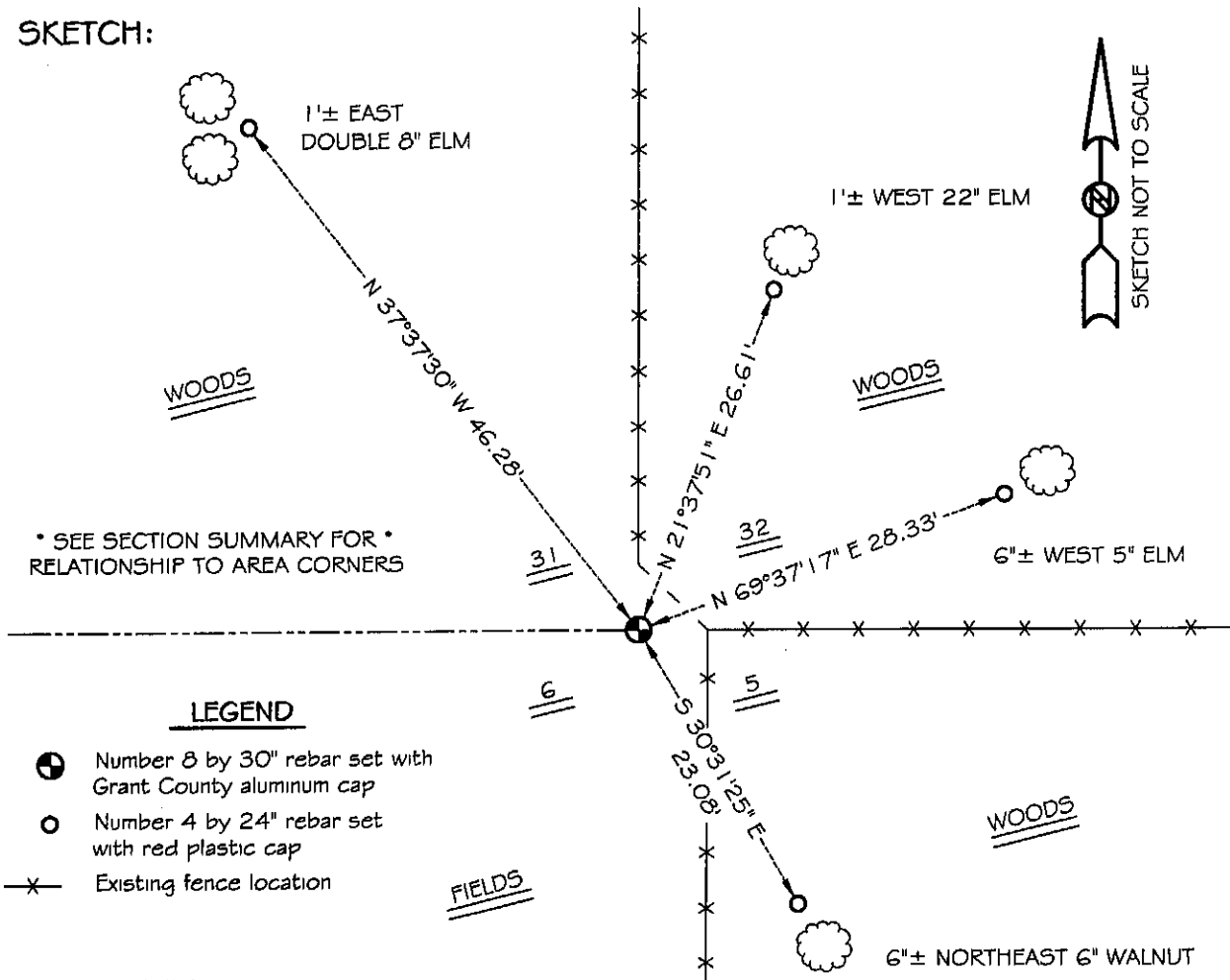
DESCRIPTION OF CORNER EVIDENCE FOUND:

I reset the corner based on occupational evidence. This location fit well with Barber's measurements. Verified this location using E.D.M. & G.P.S. methods.

DESCRIPTION OF CORNER AND WITNESS MONUMENTS, references and accessories used to perpetuate the original or re-established location of this corner

WITNESS TO THE CORNER LOCATION: SHANE AUSTIN & BOBBY SEDGWICK

SKETCH:



* SEE SECTION SUMMARY FOR *
RELATIONSHIP TO AREA CORNERS

LEGEND

- Number 8 by 30" rebar set with Grant County aluminum cap
- Number 4 by 24" rebar set with red plastic cap
- X— Existing fence location

GRANT COUNTY CERTIFIED LAND CORNER

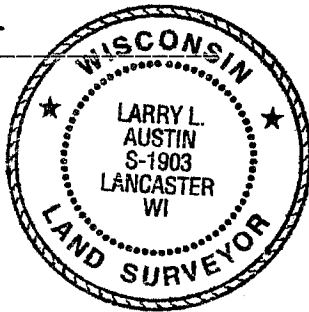
CORNER NUMBER 11

CERTIFICATE:

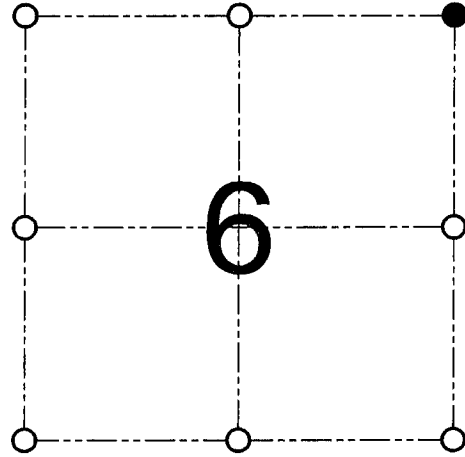
I, Larry L. Austin, do hereby certify that on the 15th day of June, 2000, I found evidence of the Northeast corner of Section 6, Town 6 North, Range 3 West, of the 4th Principal Meridian, and I re-established said corner according to the Wisconsin statutes as shown and described hereon.

Dated this 19th day of December, 2000

Larry L. Austin
Larry L. Austin S-1903



SEAL



● = CORNER LOCATION

NORTHEAST CORNER OF
SECTION 6, T 6 N R 3 W
TOWN OF MOUNT IDA

HISTORY OF ORIGINAL CORNER ESTABLISHMENT:

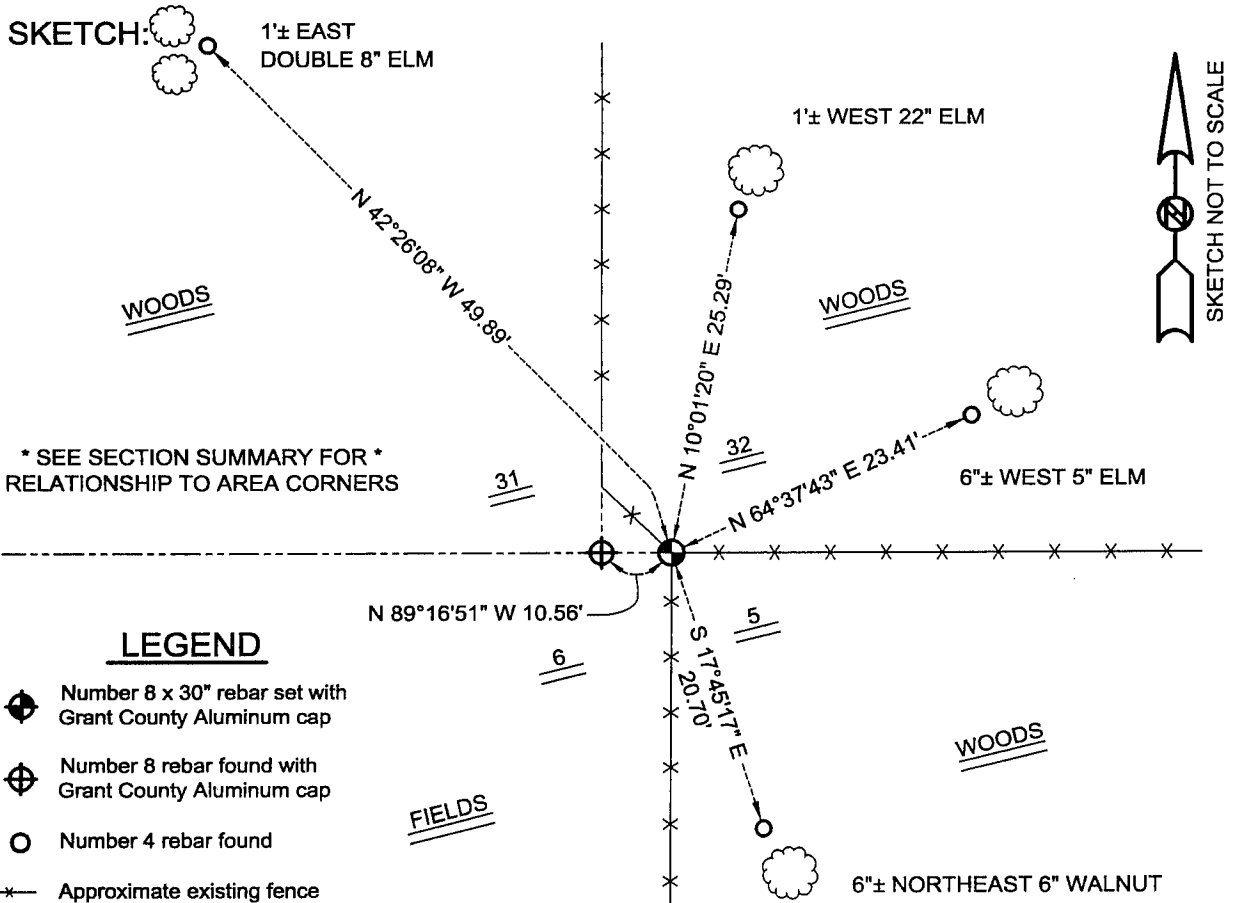
Corner was originally set in 1833 by Harvey Parke.
No other record of the corner was found.

DESCRIPTION OF CORNER EVIDENCE FOUND:

I set the corner at the recorded offset from the Southwest corner of Section 32 and online between the Southwest and South 1/4 corners of Section 32. Verified this location using EDM & GPS methods.

DESCRIPTION OF CORNER AND WITNESS MONUMENTS, references and accessories used to perpetuate the original or re-established location of this corner

WITNESS TO THE CORNER LOCATION: SHANE AUSTIN & SHELBY BLINDERT & BOBBY SEDGWICK



AUSTIN ENGINEERING, LLC
4211 HWY 81 E, LANCASTER, WI 53813
PHONE 608-723-6363 FAX 608-723-6702

FIELDBOOK: SDR33, 9914
G:\T7NR3W\19
C:\SC14\SWA\TIE\T6NR3W\11

DRAWN BY: SW AUSTIN
APPROVED: LL AUSTIN
CREW: BS - SB - SA - TF