

GRANT COUNTY CERTIFIED LAND CORNER

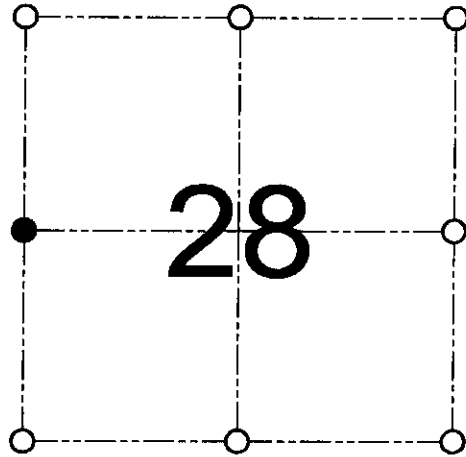
CORNER NUMBER 96

CERTIFICATE:

I, Larry L. Austin, do hereby certify that on the 4th day of August, 2000, I found evidence of the West 1/4 corner of Section 28, Town 7 North, Range 3 West, of the 4th Principal Meridian, and I re-established said corner according to the Wisconsin statutes as shown and described hereon.

Dated this 3rd day of November, 2000

Larry L. Austin
Larry L. Austin S-1903



● = CORNER LOCATION
WEST 1/4 CORNER OF SECTION 28, T 7 N R 3 W TOWN OF MARION

HISTORY OF ORIGINAL CORNER ESTABLISHMENT:

Corner was originally set in 1833 by Harvey Parke.
No other record of the corner was found.

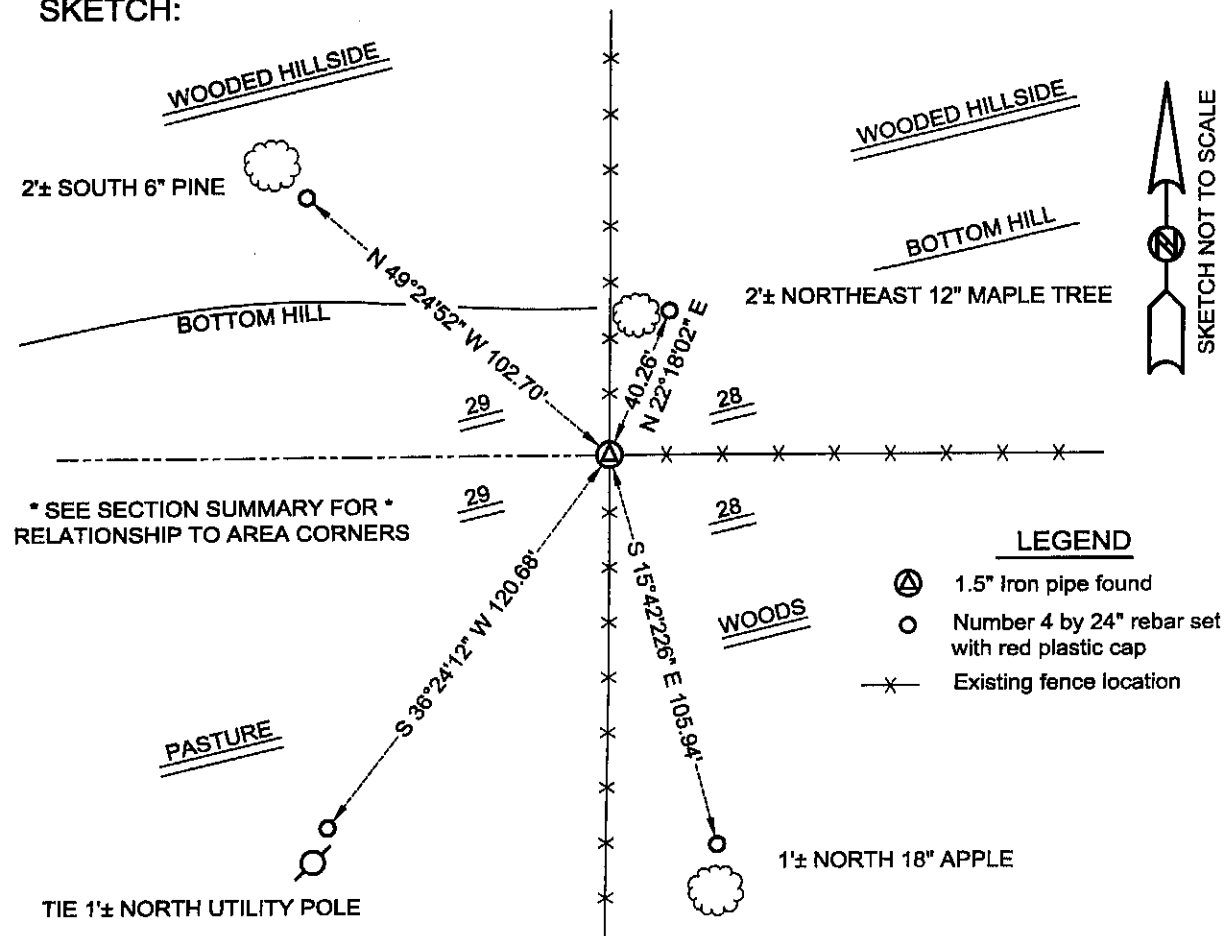
DESCRIPTION OF CORNER EVIDENCE FOUND:

I found an existing 1.5" iron pipe at an occupied fence corner.
I accepted this location after an EDM & GPS traverse of the area.

DESCRIPTION OF CORNER AND WITNESS MONUMENTS, references and accessories used to perpetuate the original or re-established location of this corner

WITNESS TO THE CORNER LOCATION: SHANE AUSTIN & SHELBY BLINDERT & BOBBY SEDGWICK

SKETCH:



* SEE SECTION SUMMARY FOR *
RELATIONSHIP TO AREA CORNERS

LEGEND

- ⊙ 1.5" Iron pipe found
- Number 4 by 24" rebar set with red plastic cap
- × Existing fence location