

GRANT COUNTY CERTIFIED LAND CORNER

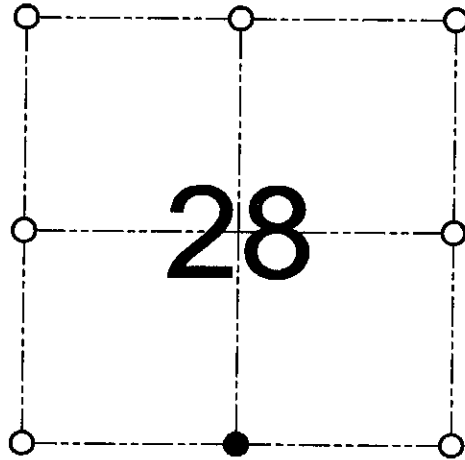
CORNER NUMBER 108

CERTIFICATE:

I, Larry L. Austin, do hereby certify that on the 28th day of July, 2000, I found no evidence of the South 1/4 corner of Section 28, Town 7 North, Range 3 West, of the 4th Principal Meridian, and I re-established said corner according to the Wisconsin statutes as shown and described hereon.

Dated this 3rd day of November, 2000

Larry L. Austin
Larry L. Austin S-1903



● = CORNER LOCATION
SOUTH 1/4 CORNER OF SECTION 28, T 7 N R 3 W TOWN OF MARION

HISTORY OF ORIGINAL CORNER ESTABLISHMENT:

Corner was originally set in 1833 by Harvey Parke.
No other record of the corner was found.

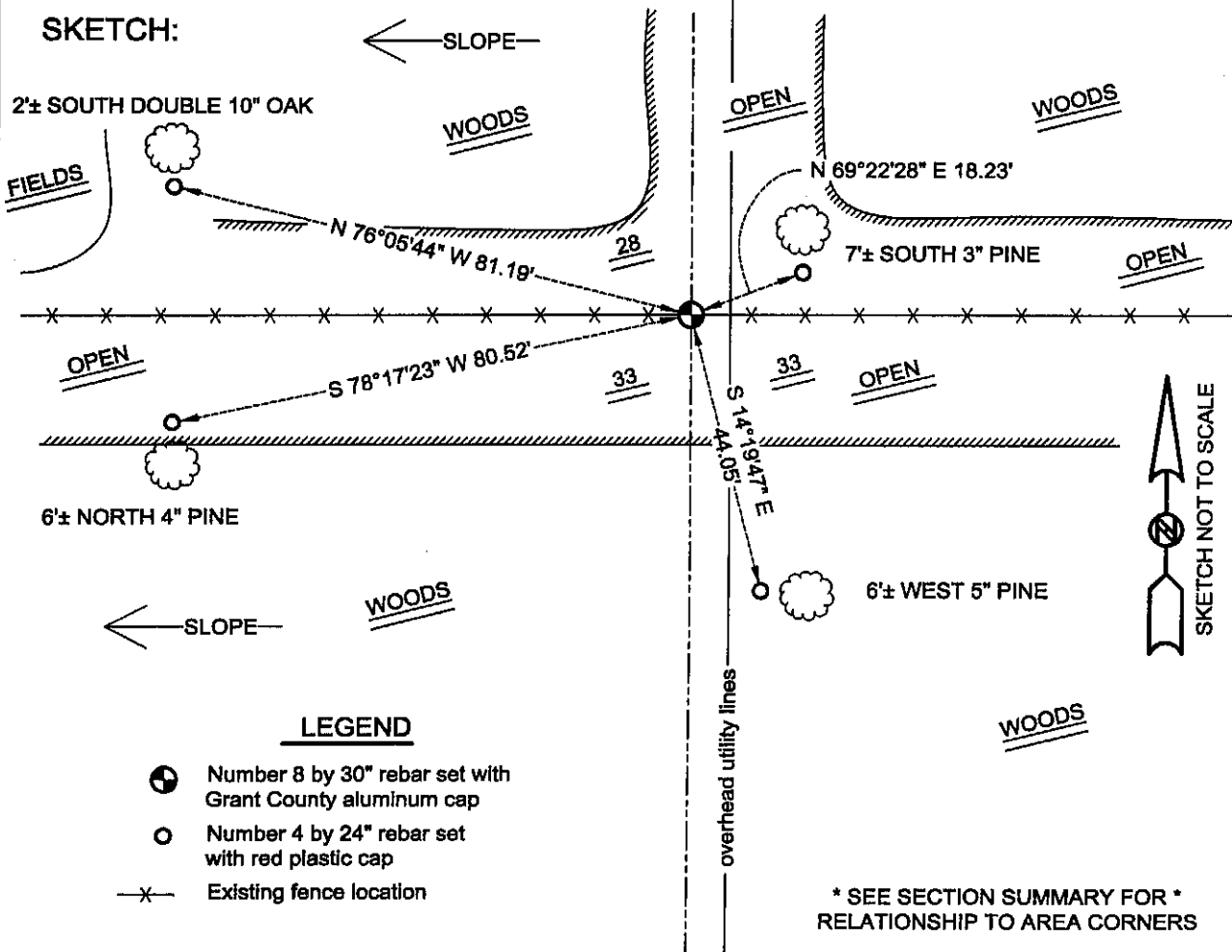
DESCRIPTION OF CORNER EVIDENCE FOUND:

I found an existing East-West fence for Northing. Easting was established based on a proportion between the Southwest and Southeast corners of Section 28. Verified this location using EDM & GPS methods.

DESCRIPTION OF CORNER AND WITNESS MONUMENTS, references and accessories used to perpetuate the original or re-established location of this corner

WITNESS TO THE CORNER LOCATION: SHANE AUSTIN & SHELBY BLINDERT & BOBBY SEDGWICK

SKETCH:



LEGEND

- Number 8 by 30" rebar set with Grant County aluminum cap
- Number 4 by 24" rebar set with red plastic cap
- x— Existing fence location

* SEE SECTION SUMMARY FOR *
RELATIONSHIP TO AREA CORNERS