

# GRANT COUNTY CERTIFIED LAND CORNER

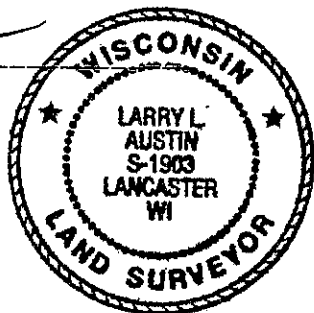
CORNER NUMBER 100

**CERTIFICATE:**

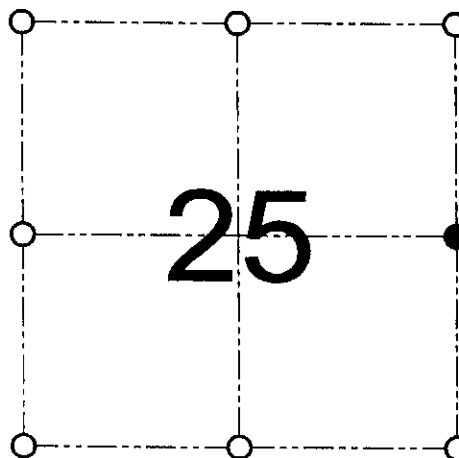
I, Larry L. Austin, do hereby certify that on the 13th day of April, 2000, I found evidence of the East 1/4 corner of Section 25, Town 7 North, Range 3 West, of the 4th Principal Meridian, and I re-established said corner according to the Wisconsin statutes as shown and described hereon.

Dated this 25th day of November, 2000

*Larry L. Austin*  
Larry L. Austin S-1903



SEAL



● = CORNER LOCATION  
EAST 1/4 CORNER OF  
SECTION 25, T 7 N R 3 W  
TOWN OF MARION

**HISTORY OF ORIGINAL CORNER ESTABLISHMENT:**

Corner was originally set in 1832 by Sibley. In 1997 Walsh set a #6 iron bar at this location. No other record of the corner was found.

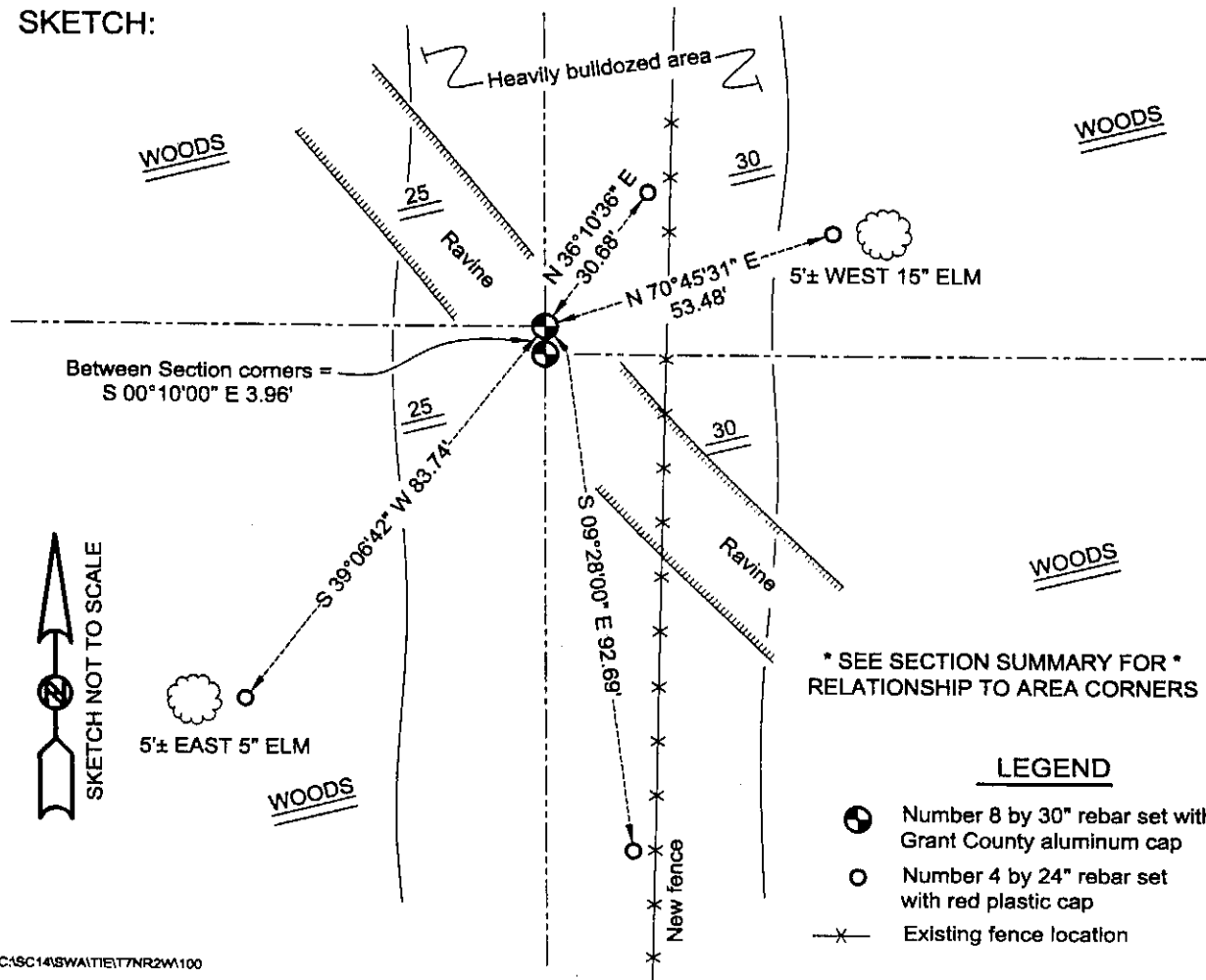
**DESCRIPTION OF CORNER EVIDENCE FOUND:**

I found no evidence in the area to the location of Walsh's corner. I reset it based on Walsh's location. This location was verified using EDM & GPS methods.

**DESCRIPTION OF CORNER AND WITNESS MONUMENTS, references and accessories used to perpetuate the original or re-established location of this corner**

WITNESS TO THE CORNER LOCATION: SHANE AUSTIN & SHELBY BLINDERT & BOBBY SEDGWICK

**SKETCH:**



# GRANT COUNTY CERTIFIED LAND CORNER

CORNER NUMBER 94

**CERTIFICATE:**

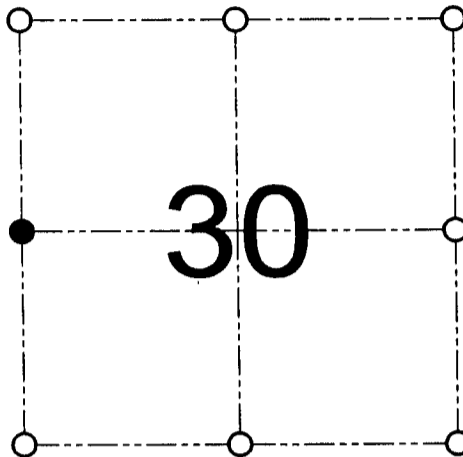
I, Larry L. Austin, do hereby certify that on the th day of , 2000, I found no evidence of the West 1/4 corner of Section 30, Town 7 North, Range 2 West, of the 4th Principal Meridian, and I re-established said corner according to the Wisconsin statutes as shown and described hereon.

Dated this 25th day of November, 2000

*Larry L. Austin*  
Larry L. Austin S-1903



SEAL



● = CORNER LOCATION

WEST 1/4 CORNER OF  
SECTION 30, T 7 N R 2 W  
TOWN OF HICKORY GROVE

**HISTORY OF ORIGINAL CORNER ESTABLISHMENT:**

Corner was never originally set.

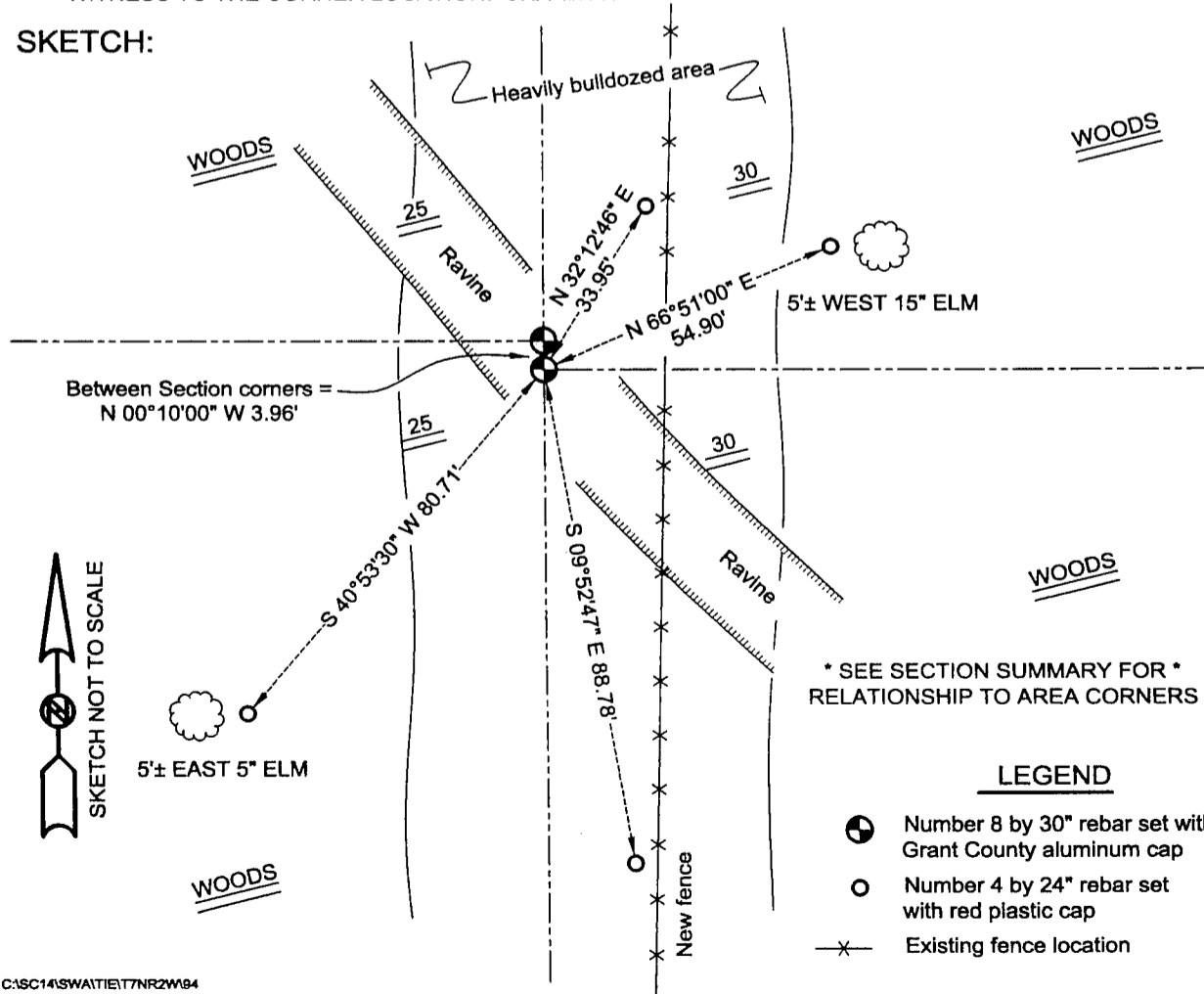
**DESCRIPTION OF CORNER EVIDENCE FOUND:**

I set the corner based on the proportioned offset from the East 1/4 of Section 25. Verified this location using EDM & GPS methods.

**DESCRIPTION OF CORNER AND WITNESS MONUMENTS, references and accessories used to perpetuate the original or re-established location of this corner**

WITNESS TO THE CORNER LOCATION: SHANE AUSTIN & SHELBY BLINDERT & BOBBY SEDGWICK

**SKETCH:**



REC'D JUN 4 1997

# GRANT COUNTY U.S. PUBLIC LAND SURVEY MONUMENT RECORD

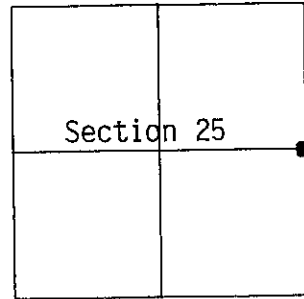
East 1/4 corner Section 25, 7-3W

TYPE OF MONUMENT:  
TIES ARE AS INDICATED ON SKETCH

WITNESSES TO CORNER LOCATION

Christopher G. Reedy

Christopher J. Ruetten



CORNER LOCATION

### BASIS FOR MONUMENT LOCATION

Subsequent to the Original Gov't. Survey, no record evidence of this corner could be located.

This corner has been re-established at a location which is at the mid-point along the occupied East line of Section 25.

This information is correct and true to the best of my information, knowledge and belief.

- -- 3/4" x 24" iron rod set at corner
- -- 3/4" x 24" iron rod set at witness tie

### TIE SKETCH

