

# Survey Monument Record

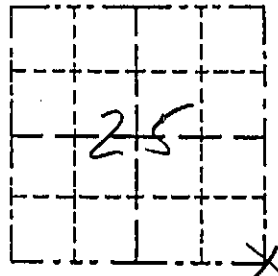
TYPE OF MONUMENT 1-1/2" Iron Pipe  
 STATE PLANE COORDINATES: N \_\_\_\_\_  
 E \_\_\_\_\_  
 ELEVATION — M.S.L. DATUM: \_\_\_\_\_  
 THETA ANGLE: \_\_\_\_\_  
 FIELD BOOK: 95-5  
 PAGE 955-265 MLPR

CORNER NO. \_\_\_\_\_  
 SECTION 25  
 TOWN 7N  
 RANGE 3W

## BASIS FOR MONUMENT LOCATION

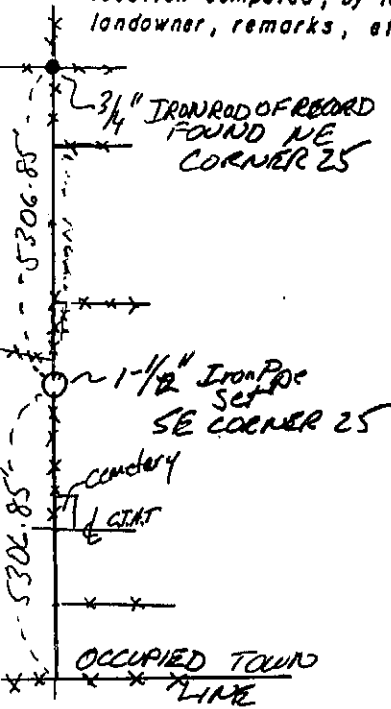
(Use reverse side if necessary)

Show info such as: History of corner, with reference to Vol. and pg., dates, surveyor; exact description of monument replaced; if location computed, by taped or EDM traverse; landowner, remarks, etc.

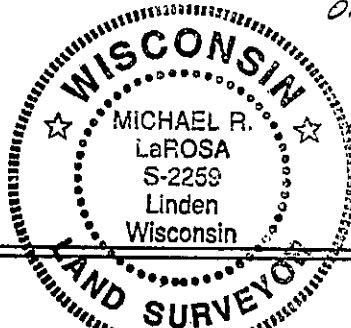


LOCATION  
 (Indicated by "X")

- FOUND PERPETUATED LOCATION
- OBLITERATED EVIDENCE LOCATION
- LOST CORNER (RESTORED BY PROPORTIONATE METHODS)



There are no survey records of this corner since the original government record. Physical Evidence Found is a fence intersection 1" rod north of corner and a 4" steel pipe post bent over and buried south easterly of corner. The corner was computed in line with the fence line North and South at the proportional distance between the monumented NE and occupied SE corners.



CERTIFIED CORRECT TO THE BEST OF MY KNOWLEDGE AND BELIEF

Michael R. LaRosa  
 Registered Land Surveyor

DATE: 8/17/1995

## TIE SKETCH

Show at least three (4) ties to monument

