

MAY 25 1990

GRANT COUNTY

GOVERNMENT CORNER RECORD

WEST 1/4 CORNER, SECTION 19, TOWNSHIP 7 NORTH, RANGE 2 EAST - WEST,
TOWN, CITY OR VILLAGE OF HICKORY GROVE, RICHLAND CO.

TYPE OF MONUMENT: 3/4" IRON ROD SET ELEVATION - M.S.L. DATUM _____

STATE PLANE COORDINATES: N _____

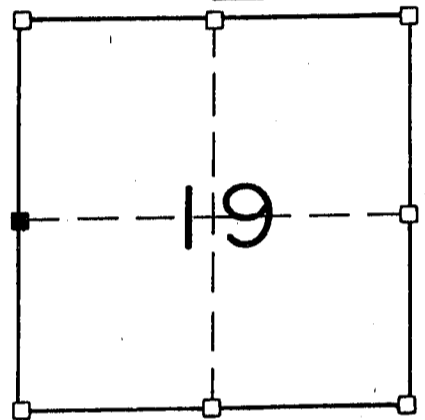
WISCONSIN SOUTH ZONE E _____

WITNESSES TO CORNER LOCATION

SEAN M. WALSH _____

PATRICK J. DEDERICH _____

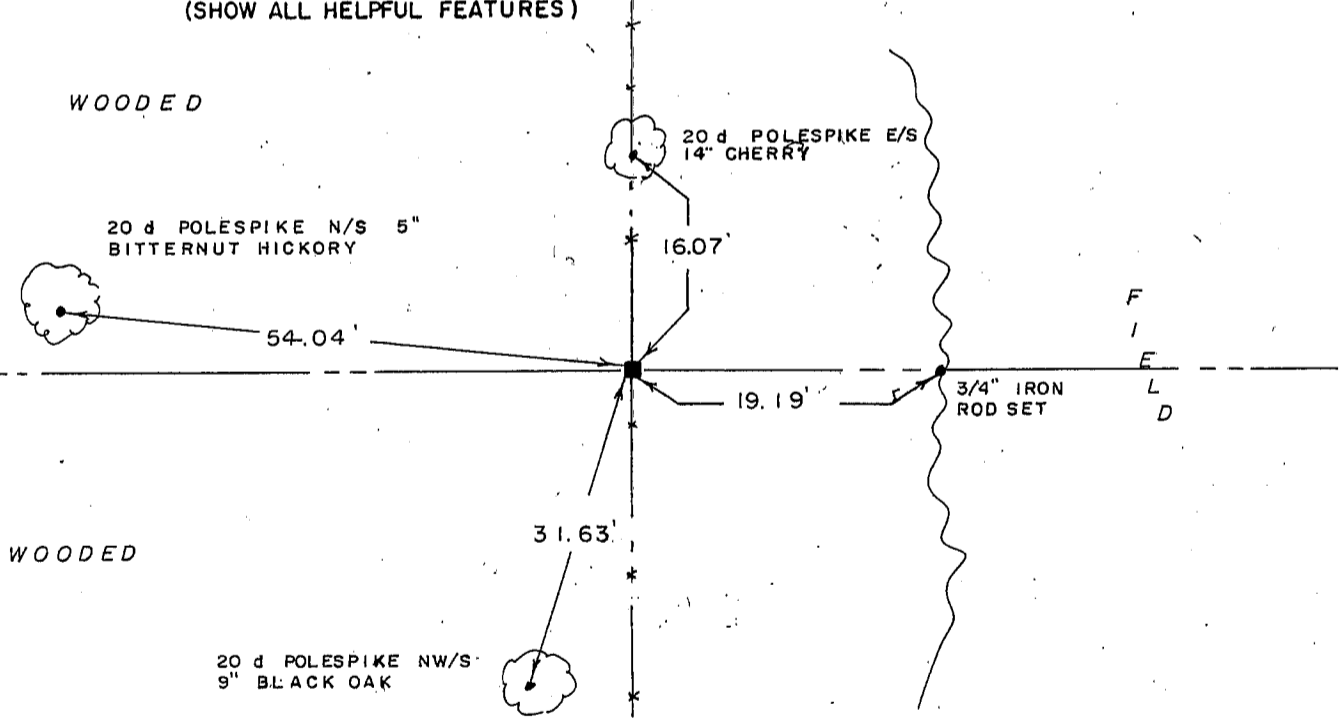
SECTION 19, T 7 N, R 2 E W
TOWN OF HICKORY GROVE



■ - CORNER LOCATION

NORTH

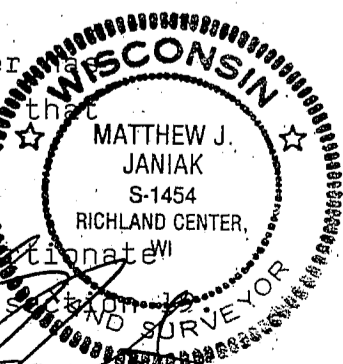
TIE SKETCH
(SHOW ALL HELPFUL FEATURES)



SURVEYOR'S CERTIFICATE
STATE OF WISCONSIN)
RICHLAND COUNTY) SS

SEAL S-1454

I, Matthew J. Janiak, DO HEREBY CERTIFY THAT the above corner
been established under my direction and supervision and that
the information contained hereon is true and correct to
the best of my information, knowledge and belief. the
location of this corner was established by single proportionate
measure between the Northwest and Southwest corners of



DATED THIS 16TH DAY OF May, 19 90

REGISTERED LAND SURVEYOR

CORNER CODE

