

# U.S. PUBLIC LAND SURVEY MONUMENT RECORD - GRANT COUNTY, WI

Section 24, Town 7 North Range 3 West, Town of Marion

**CERTIFICATE:**

I, Aaron J. Austin, do hereby certify that the corner location on this record was determined by me and/or under my direct supervision and that this U.S. Public Land Survey Monument Record is correct and complete to the best of my knowledge and belief.

Dated this 10th day of October, 2012.

*Aaron J. Austin*  
 Aaron J. Austin, S-2922



● = CORNER LOCATION

HISTORY OF CORNER ESTABLISHMENT:

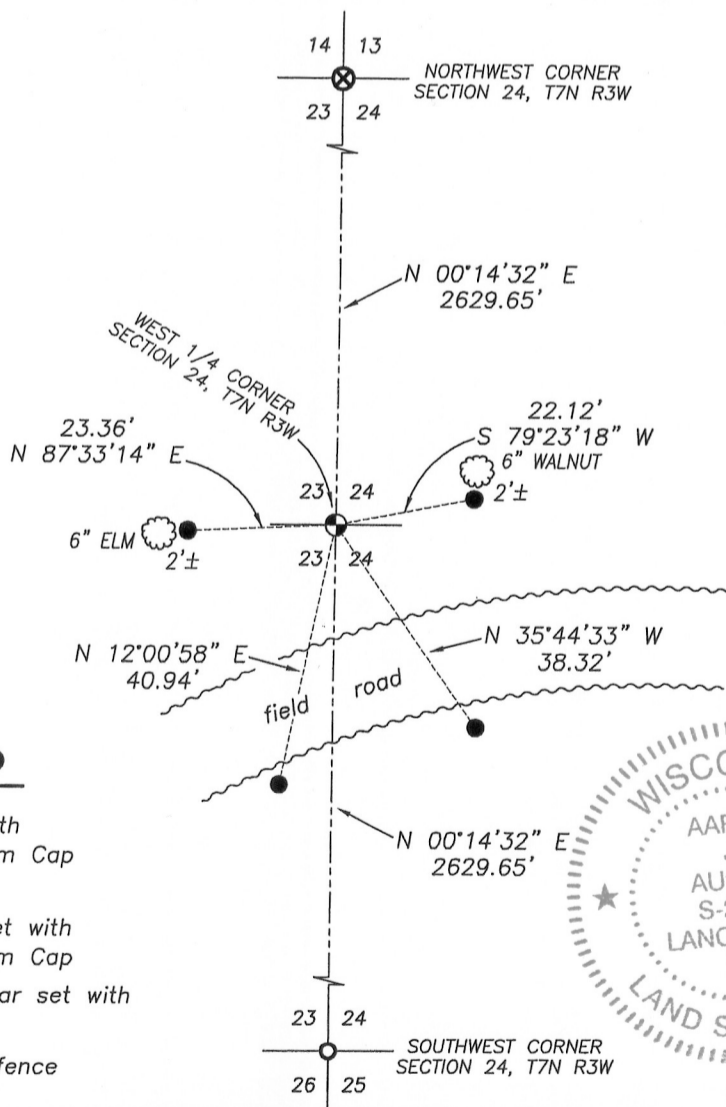
Corner was originally set in 1833 by Harvey Parke. This corner was also shown on a Right of Way Plat Project F 08-1(17) dated January 22, 1951. No other record was found for this corner.

DESCRIPTION OF CORNER EVIDENCE FOUND:

No evidence of the corner was found. I reset the corner midway and online between the Northwest and Southwest corners of Section 24. I verified this location by E.D.M. and G.P.S. methods.

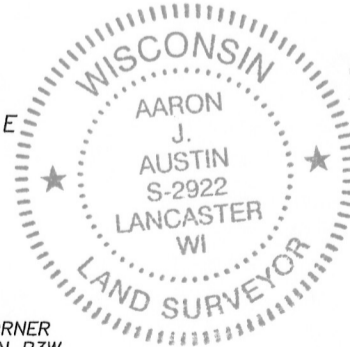
DESCRIPTION OF CORNER AND WITNESS MONUMENTS, references and accessories used to perpetuate the original or re-established location of this corner. Witnesses to corner location Bobby Sedgwick and Shelby Blindert.

SKETCH:



**LEGEND**

- ⊗ No. 7 rebar found with Grant County Aluminum Cap
- No. 6 rebar found
- ⊙ No. 8 x 24" rebar set with Grant County Aluminum Cap
- Number 4 x 24" Rebar set with red plastic "TIE" cap
- x-x- Approximate existing fence



SKETCH NOT TO SCALE



**Austin Engineering LLC**  
 austinengineeringllc.com

4211 HWY 81 E, LANCASTER, WI 53813  
 PHONE: 608-723-6363 FAX: 608-723-6702

JOB NO: 12s157(B)  
 G:\T7NR3W\14  
 H:\TIE\T7NR3W\79

FIELDBOOK: TDSR  
 DRAWN BY: AJ AUSTIN  
 CREW: BS-SB