



OCT 26 1990

# GRANT COUNTY GOVERNMENT CORNER RECORD

E 1/4 CORNER, SECTION 22, TOWNSHIP 7 NORTH, RANGE 3 ~~EAST~~ - WEST,  
 TOWN, ~~WEST~~ OF MARION

TYPE OF MONUMENT: 3/4" X 24" IRON ROD ELEVATION - M.S.L. DATUM \_\_\_\_\_

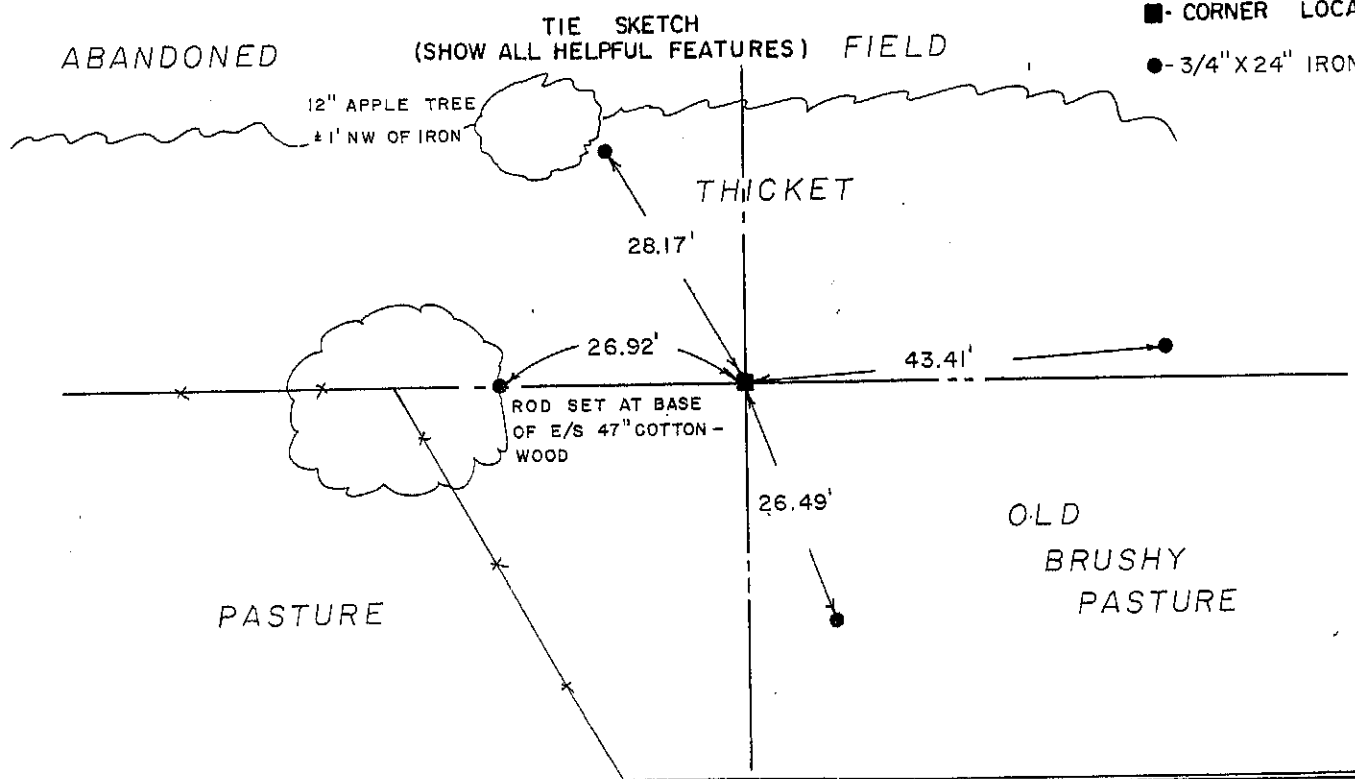
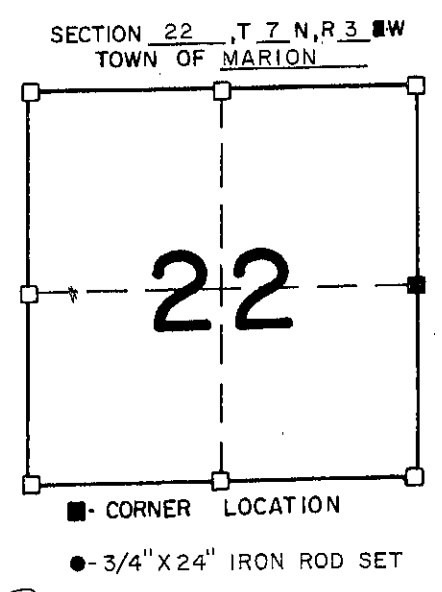
STATE PLANE COORDINATES: N \_\_\_\_\_

WISCONSIN SOUTH ZONE E \_\_\_\_\_

WITNESSES TO CORNER LOCATION

SEAN M. WALSH

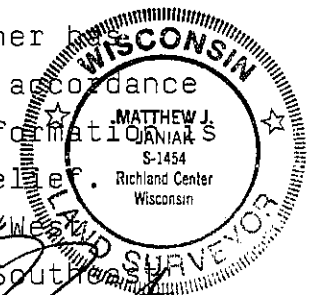
PATRICK J. DEDERICH



SURVEYOR'S CERTIFICATE  
 STATE OF WISCONSIN)  
 RICHLAND COUNTY ) ss

SEAL S-1454

I, Matthew J. Janiak, DO HEREBY CERTIFY THAT the above corner has  
been established under my direction and supervision in accordance  
with the information contained hereon and that this information is  
correct to the best of my knowledge, information and belief.  
This location is at the extension of the occupied East/West  
line and on a straight line between the Northeast and Southwest  
corners.



DATED THIS 3rd DAY OF October, 1990

Matthew J. Janiak  
 REGISTERED LAND SURVEYOR

P. 76