

00126 1990

# GRANT COUNTY GOVERNMENT CORNER RECORD

W1/4 CORNER, SECTION 22, TOWNSHIP 7 NORTH, RANGE 3 ~~WEST~~ - WEST,  
TOWN, ~~CITY OR VILLAGE OF~~ MARION

TYPE OF MONUMENT: 3/4" X 24" IRON ROD ELEVATION - M.S.L. DATUM \_\_\_\_\_

STATE PLANE COORDINATES: N \_\_\_\_\_

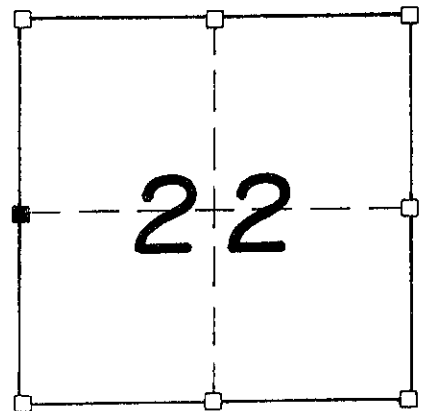
WISCONSIN SOUTH ZONE E \_\_\_\_\_

WITNESSES TO CORNER LOCATION

SEAN M. WALSH

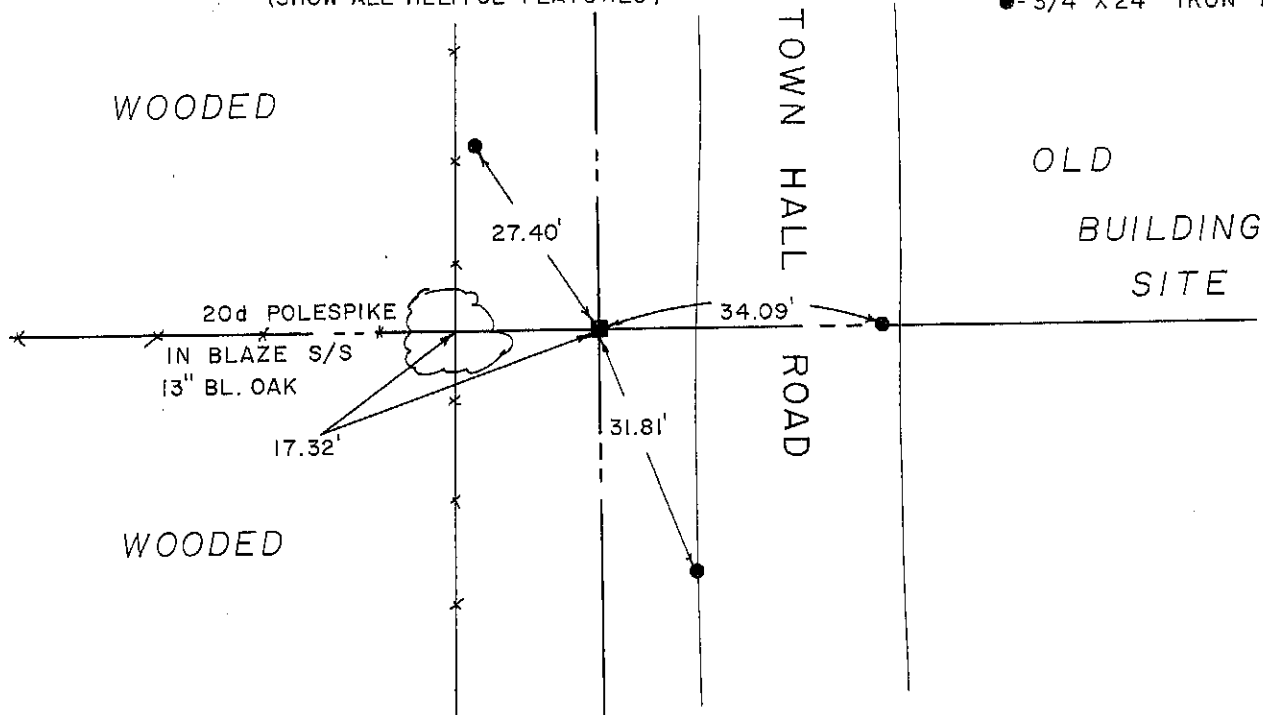
PATRICK J. DEDERICH

SECTION 22, T 7 N, R 3 W  
TOWN OF MARION



NORTH

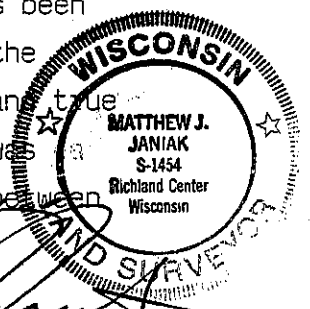
TIE SKETCH  
(SHOW ALL HELPFUL FEATURES)



SURVEYOR'S CERTIFICATE  
STATE OF WISCONSIN)  
RICHLAND COUNTY )SS

SEAL S - 1454

I, Matthew J. Janiak, DO HEREBY CERTIFY THAT the above corner has been established under my direction and supervision in accordance with the information contained hereon and that this information is correct and true to the best of my knowledge, information and belief. This corner was established on the occupied East/West line and on a straight line between the Nearest adjacent corners to the North and South



DATED THIS 3rd DAY OF OCTOBER 19 90

REGISTERED LAND SURVEYOR