

GRANT COUNTY CERTIFIED LAND CORNER

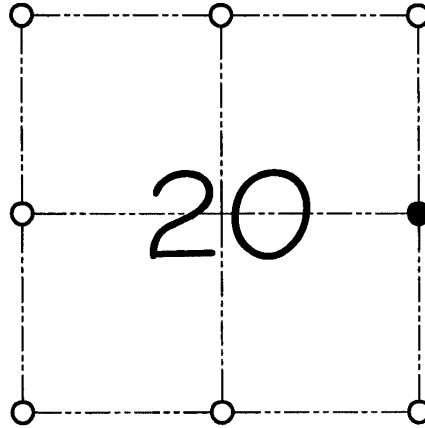
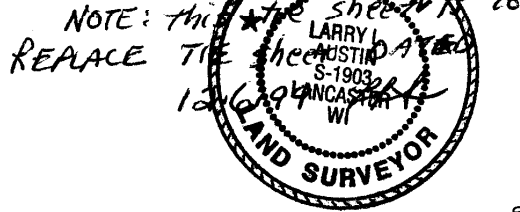
CORNER NUMBER 76

CERTIFICATE:

I, Larry L. Austin, do hereby certify that on the 17th day of November, 1999, I found no evidence of the East 1/4 corner of Section 20, Town 7 North, Range 3 West, of the 4th Principal Meridian, and I re-established said corner according to the Wisconsin statutes as shown and described hereon.

REVISED this 10th day of September, 2007

Larry L. Austin
Larry L. Austin S-1903



● = CORNER LOCATION
EAST 1/4 CORNER OF SECTION 20, T 7 N R 3 W TOWN OF MARION

SEAL

HISTORY OF ORIGINAL CORNER ESTABLISHMENT:

CORNER WAS ORIGINALLY SET IN 1833 BY HARVEY PARKE.
NO OTHER RECORD OF THE CORNER WAS FOUND.

DESCRIPTION OF CORNER EVIDENCE FOUND:

I reset the corner proportionately between the
Northeast and Southeast corners of Section 20.
Verified this location using E.D.M. & G.P.S. methods.

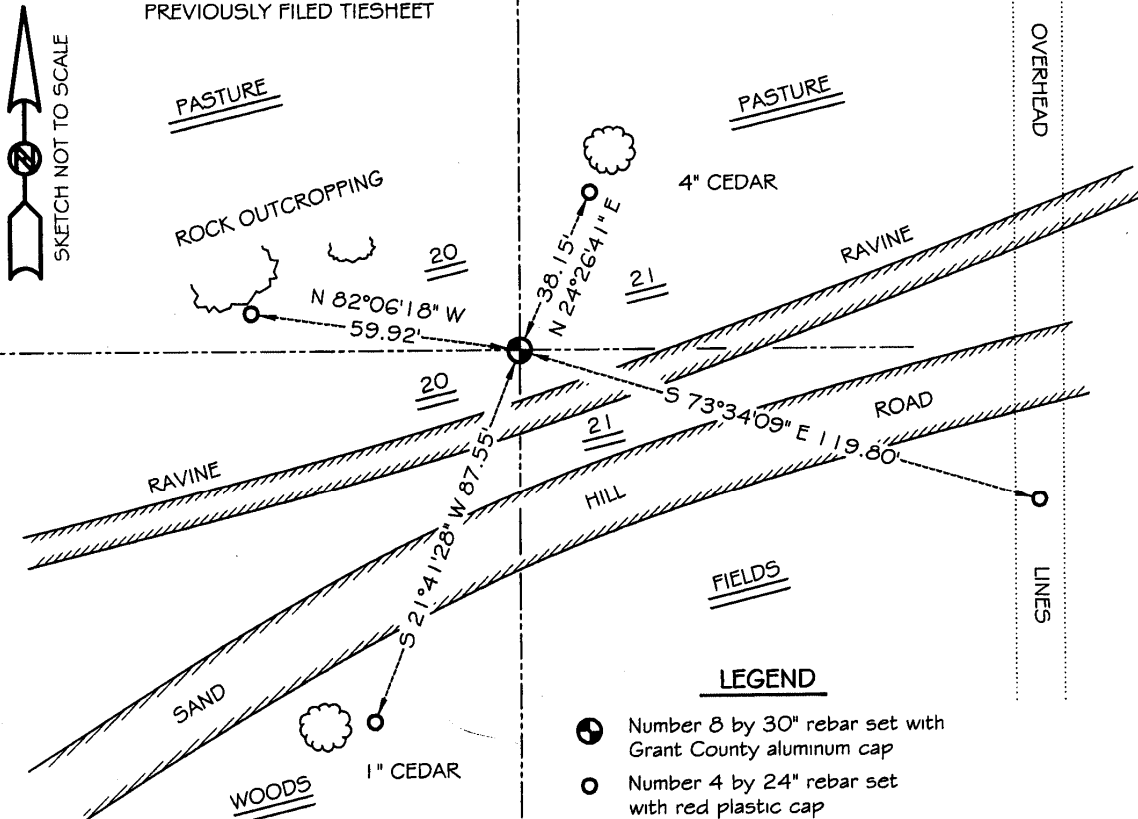
DESCRIPTION OF CORNER AND WITNESS MONUMENTS, references and accessories used to perpetuate the original or re-established location of this corner

WITNESS TO THE CORNER LOCATION: SHANE AUSTIN & SHELBY BLINDERT & BOBBY SEDGWICK

SKETCH:

NOTE
THIS TIESHEET IS TO REPLACE
PREVIOUSLY FILED TIESHEET

* SEE SECTION SUMMARY FOR *
RELATIONSHIP TO AREA CORNERS



LEGEND

- Number 8 by 30" rebar set with Grant County aluminum cap
- Number 4 by 24" rebar set with red plastic cap

GRANT COUNTY CERTIFIED LAND CORNER

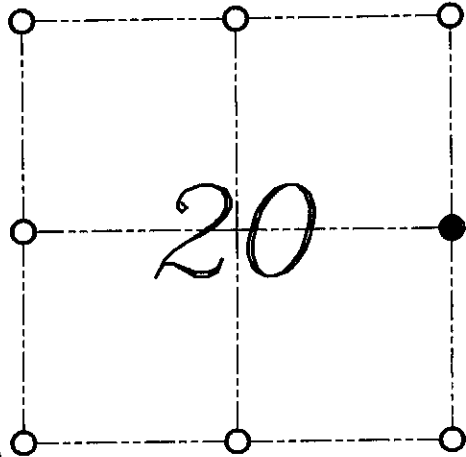
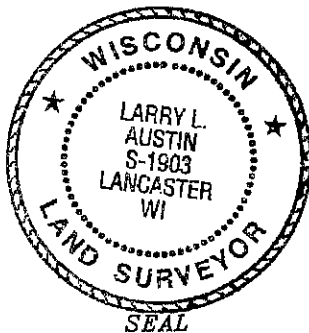
CORNER NUMBER 76

CERTIFICATE:

I, LARRY L. AUSTIN, DO HEREBY CERTIFY THAT ON 17th DAY OF NOVEMBER 1999, I FOUND NO EVIDENCE OF THE EAST 1/4 CORNER OF SECTION 20, TOWN 7 NORTH, RANGE 3 WEST, OF THE FOURTH PRINCIPAL MERIDIAN, AND I RE-ESTABLISHED SAID CORNER ACCORDING TO THE WISCONSIN STATUTES AS SHOWN AND DESCRIBED HEREON.

DATED THIS 6th DAY OF DECEMBER, 1999

Larry L. Austin
LARRY L. AUSTIN S-1903



● = CORNER LOCATION
EAST 1/4 CORNER OF
SECTION 20, T 7 N R 3 W
TOWN OF MARION

HISTORY OF ORIGINAL CORNER ESTABLISHMENT:

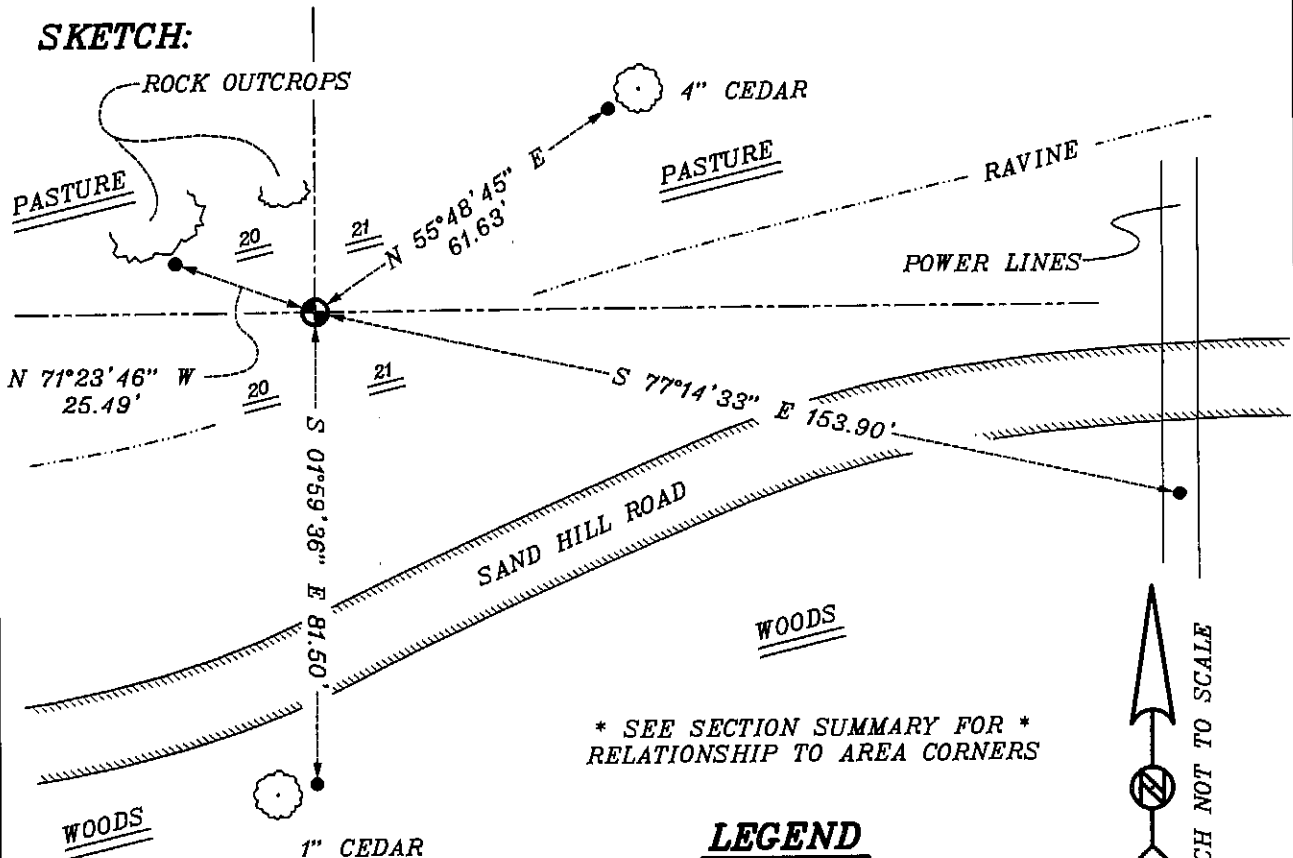
CORNER WAS ORIGINALLY SET IN 1833 BY HARVEY PARKE.
NO OTHER RECORD OF THE CORNER WAS FOUND.

DESCRIPTION OF CORNER EVIDENCE FOUND:

I FOUND NO EVIDENCE OF THE LOCATION OF THE CORNER. I RESET THE CORNER BASED ON A SINGLE PROPORTION ALONG THE EAST LINE OF THE NORTHEAST QUARTER. VERIFIED THIS LOCATION USING E.D.M. AND G.P.S. METHODS.

DESCRIPTION OF CORNER AND WITNESS MONUMENTS, REFERENCES AND ACCESSORIES USED TO PERPETUATE THE ORIGINAL OR RE-ESTABLISHED LOCATION OF THIS CORNER:
WITNESS TO THE CORNER LOCATION: SHANE AUSTIN ; SHELBY BLINDERT

SKETCH:



* SEE SECTION SUMMARY FOR *
RELATIONSHIP TO AREA CORNERS

LEGEND

- NUMBER 8 X 30" REBAR SET WITH GRANT COUNTY ALUMINUM CAP
- NUMBER 4 X 24" REBAR SET WITH RED PLASTIC CAP



SKETCH NOT TO SCALE