

GRANT COUNTY CERTIFIED LAND CORNER

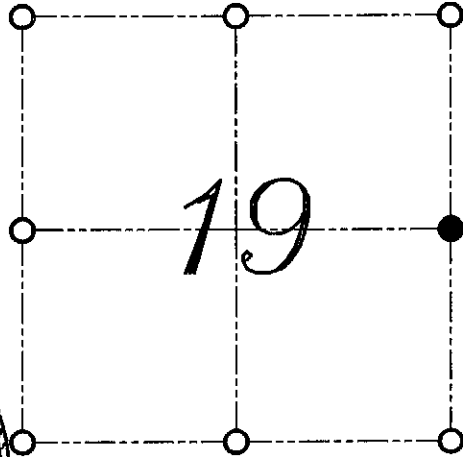
CORNER NUMBER 75

CERTIFICATE:

I, LARRY L. AUSTIN, DO HEREBY CERTIFY THAT ON 17th DAY OF NOVEMBER, 1999, I FOUND NO EVIDENCE OF THE EAST 1/4 CORNER OF SECTION 19, TOWN 7 NORTH, RANGE 3 WEST, OF THE FOURTH PRINCIPAL MERIDIAN, AND I RE-ESTABLISHED SAID CORNER ACCORDING TO THE WISCONSIN STATUTES AS SHOWN AND DESCRIBED HEREON.

DATED THIS 6th DAY OF DECEMBER, 1999

Larry L. Austin
LARRY L. AUSTIN S-1903



● = CORNER LOCATION
EAST 1/4 CORNER OF SECTION 19, T 7 N R 3 W TOWN OF MARION



HISTORY OF ORIGINAL CORNER ESTABLISHMENT:

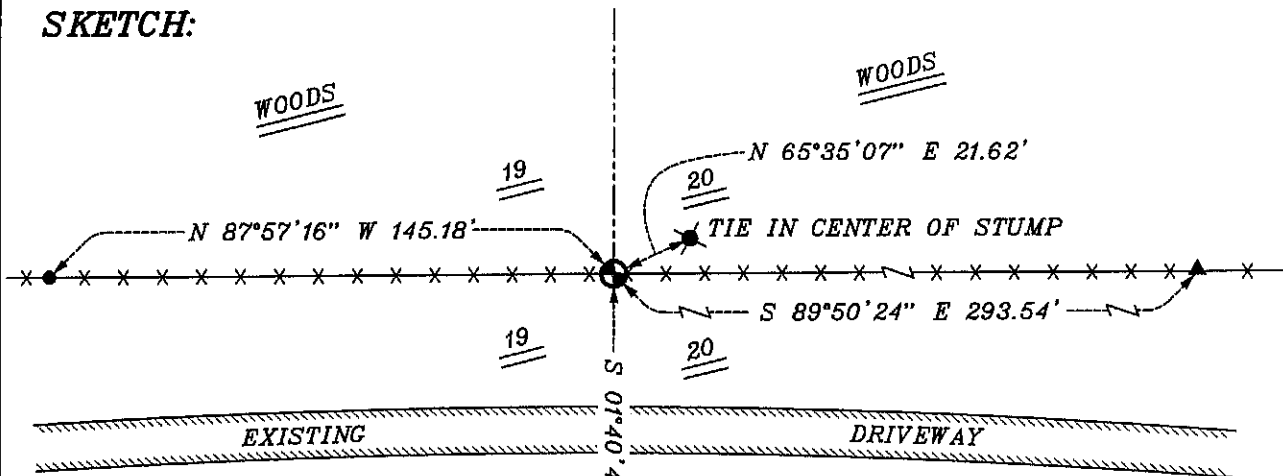
CORNER WAS ORIGINALLY SET IN 1833 BY HARVEY PARKE.
NO OTHER RECORD OF THE CORNER WAS FOUND.

DESCRIPTION OF CORNER EVIDENCE FOUND:

I FOUND NO EVIDENCE OF THE CORNER LOCATION. I SET THE CORNER BASED ON A SINGLE PROPORTION ALONG THE EAST LINE OF SECTION 19. VERIFIED THIS LOCATION USING E.D.M. AND G.P.S. METHODS.

DESCRIPTION OF CORNER AND WITNESS MONUMENTS, REFERENCES AND ACCESSORIES USED TO PERPETUATE THE ORIGINAL OR RE-ESTABLISHED LOCATION OF THIS CORNER:
WITNESS TO THE CORNER LOCATION: SHELBY BLINDERT & SHANE AUSTIN

SKETCH:



PASTURE

18" DOUBLE OAKS

* SEE SECTION SUMMARY FOR *
RELATIONSHIP TO AREA CORNERS

PASTURE

LEGEND

- NUMBER 8 X 30" REBAR SET WITH GRANT COUNTY ALUMINUM CAP
- NUMBER 4 X 24" REBAR SET WITH RED PLASTIC CAP
- ▲ NUMBER 6 X 24" REBAR SET
- *- EXISTING FENCE LOCATION