

APR 15 1991

# GOVERNMENT CORNER RECORD

E 1/4 CORNER, SECTION 18, TOWNSHIP 7 NORTH, RANGE 3 WEST,

TOWN, ~~OF~~ OF MARION

TYPE OF MONUMENT: 3/4" X 24" IRON ROD PLACED ELEVATION - M.S.L. DATUM

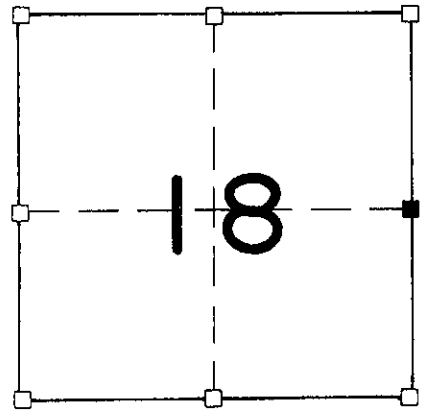
WITNESSES TO CORNER LOCATION

SEAN M. WALSH

PATRICK J. DEDERICH

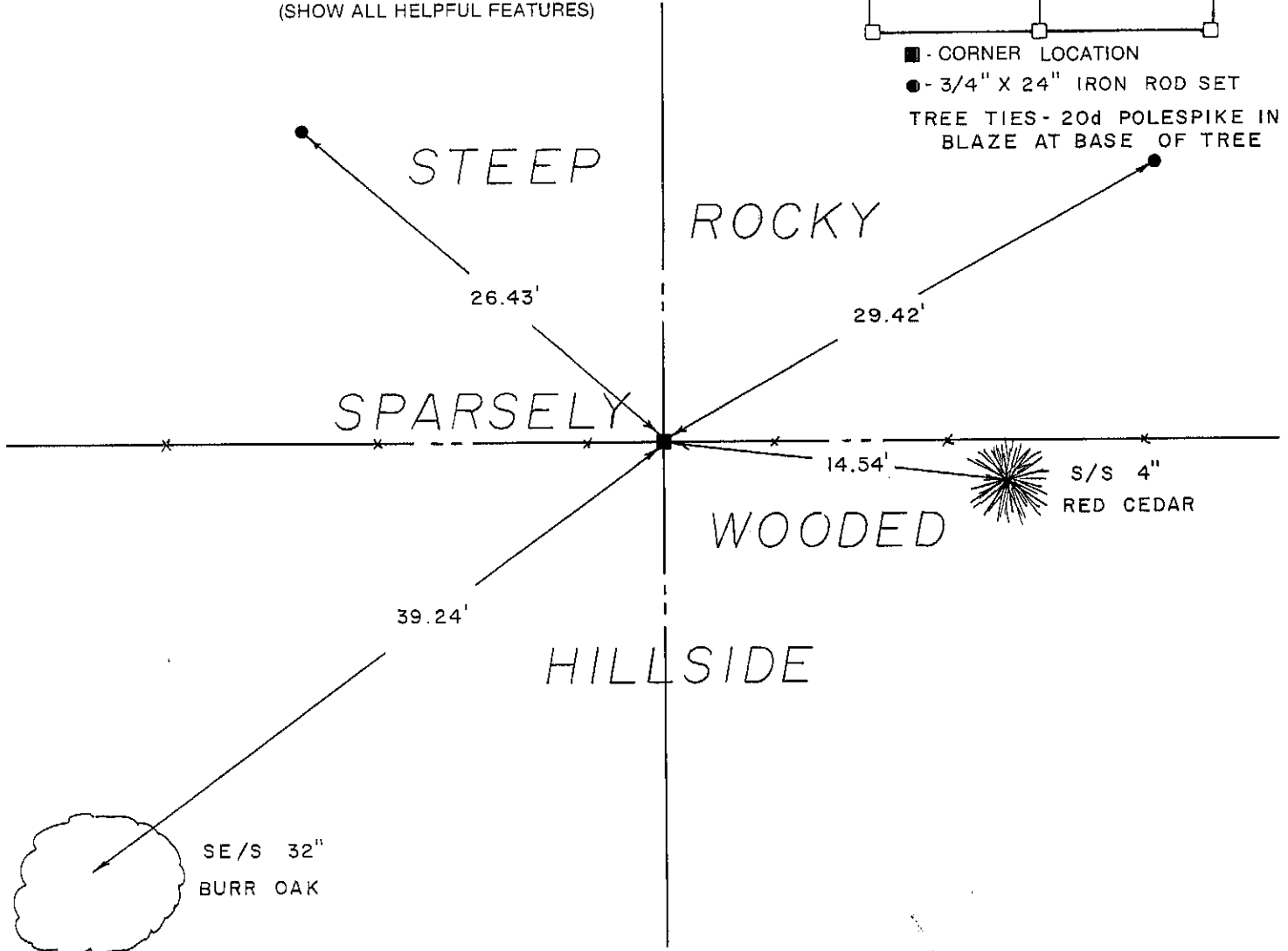
SECTION 18, T. 7 N, R. 3 W

TOWN OF MARION



NORTH

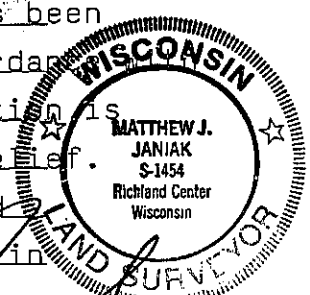
TIE SKETCH (SHOW ALL HELPFUL FEATURES)



SURVEYOR'S CERTIFICATE

SEAL S- 1454

I, Matthew J. Janiak, DO HEREBY CERTIFY THAT the above corner has been established under my direction and supervision in accordance with the information contained hereon and that this information is correct to the best of my information, knowledge and belief. This corner has been established at the location of old occupation as no other evidence is available to assist in determining the location of the corner.



DATED THIS 9th DAY OF APRIL, 1991

REGISTERED LAND SURVEYOR

