

# GRANT COUNTY CERTIFIED LAND CORNER

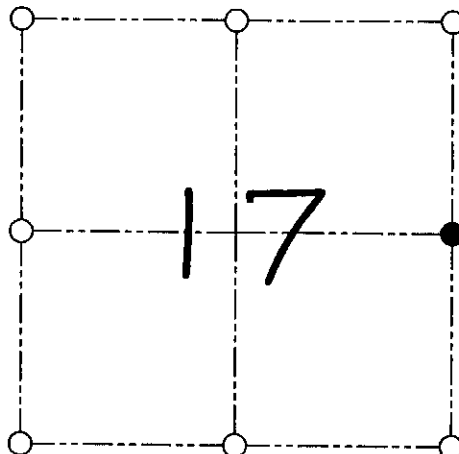
CORNER NUMBER 56

**CERTIFICATE:**

I, Larry L. Austin, do hereby certify that on the 11th day of April, 2000, I found evidence of the East 1/4 corner of Section 17, Town 7 North, Range 3 West, of the 4th Principal Meridian, and I re-established said corner according to the Wisconsin statutes as shown and described hereon.

Dated this 21st day of April, 2000

*Larry L. Austin*  
Larry L. Austin S-1903



● = CORNER LOCATION

EAST 1/4 CORNER OF  
SECTION 17, T 7 N R 3 W  
TOWN OF MARION

**HISTORY OF ORIGINAL CORNER ESTABLISHMENT:**

Corner was originally set in 1833 by Harvey Parke.  
In 1997 Sean Walsh set a 3/4" iron bar at this location.

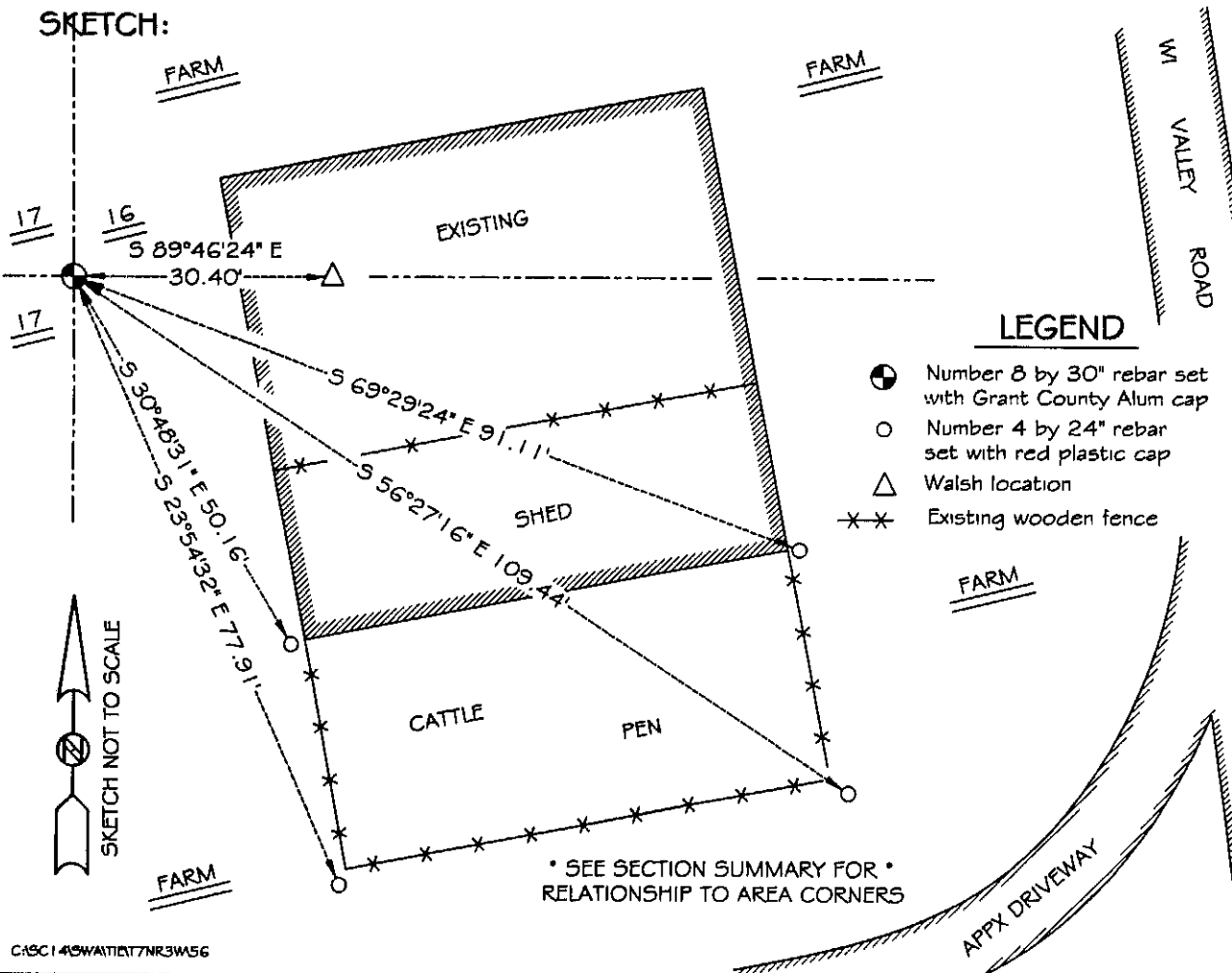
**DESCRIPTION OF CORNER EVIDENCE FOUND:**

I did not find the bar but set the corner online with the Northeast & Southeast corners. Verified this location after an E.D.M. & G.P.S. traverse of the area.

**DESCRIPTION OF CORNER AND WITNESS MONUMENTS, references and accessories used to perpetuate the original or re-established location of this corner**

WITNESS TO THE CORNER LOCATION: SHANE AUSTIN & SHELBY BLINDERT

**SKETCH:**



\* SEE SECTION SUMMARY FOR \*  
RELATIONSHIP TO AREA CORNERS

CASC149WAT117NR3W56

JUN 14 2001