

# GRANT COUNTY CERTIFIED LAND CORNER

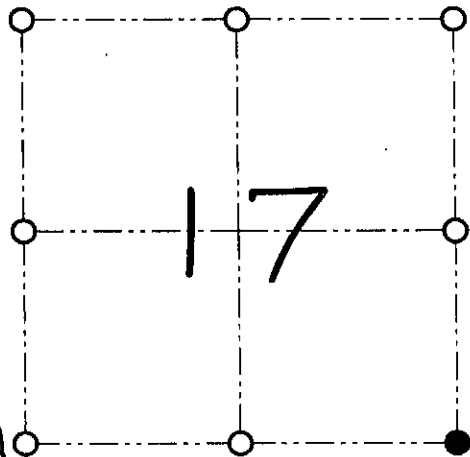
CORNER NUMBER 69

**CERTIFICATE:**

I, Larry L. Austin, do hereby certify that on the 11th day of April, 2000, I found evidence of the Southeast corner of Section 17, Town 7 North, Range 3 West, of the 4th Principal Meridian, and I re-established said corner according to the Wisconsin statutes as shown and described hereon.

Dated this 24th day of August, 2000

*Larry L. Austin*  
Larry L. Austin S-1903



● = CORNER LOCATION

SOUTHEAST CORNER OF SECTION 17, T 7 N R 3 W TOWN OF MARION

**HISTORY OF ORIGINAL CORNER ESTABLISHMENT:**

Corner was originally set in 1833 by Harvey Parke.  
In 1997 Walsh set a 1" iron pipe at this corner.

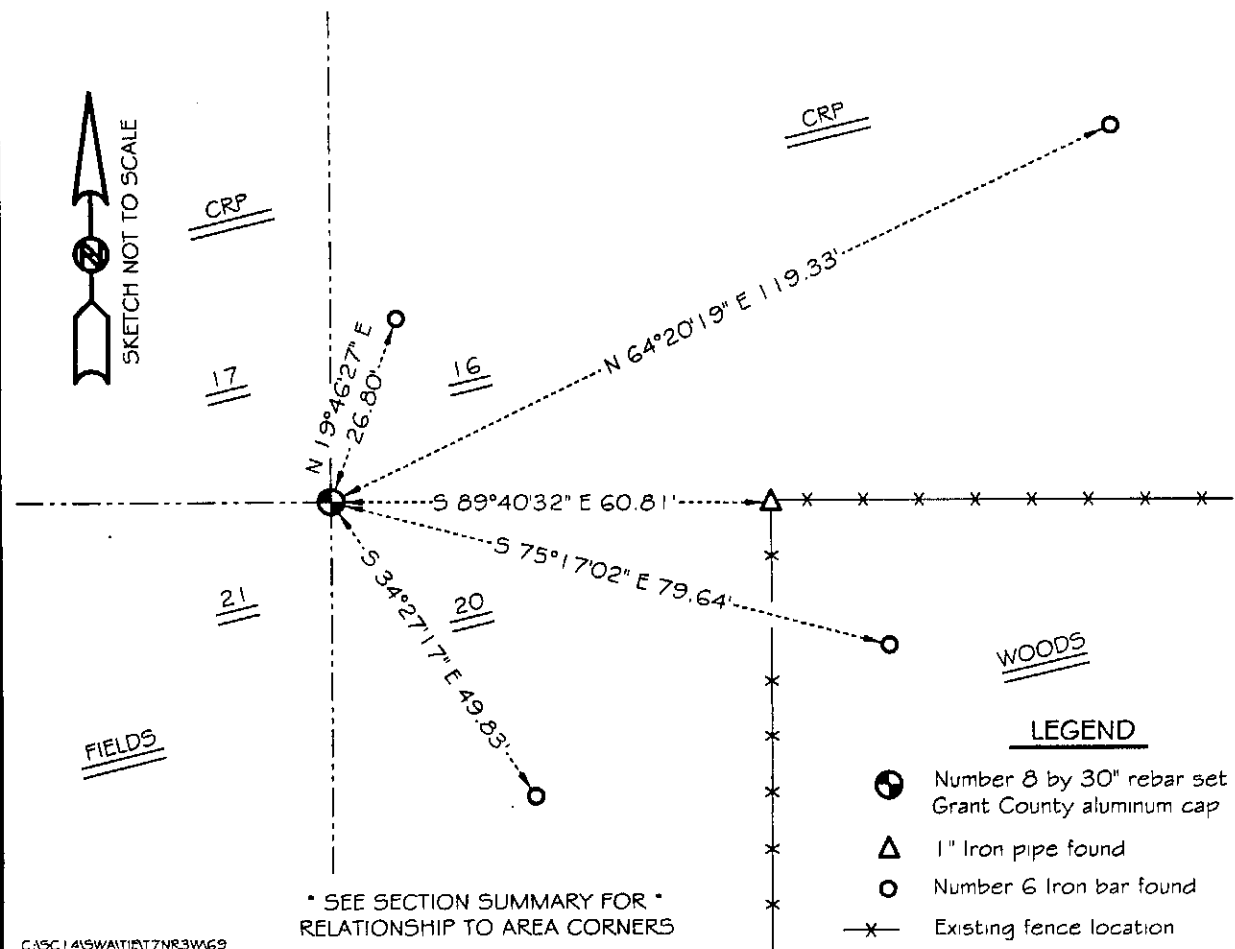
**DESCRIPTION OF CORNER EVIDENCE FOUND:**

After measuring 4 ways from the corner I did not accept the location of the 1" iron pipe. I reset the corner proportionately between the 4 adjoining section corners. Verified this location using E.D.M. & G.P.S. methods.

**DESCRIPTION OF CORNER AND WITNESS MONUMENTS, references and accessories used to perpetuate the original or re-established location of this corner**

WITNESS TO THE CORNER LOCATION: SHELBY BLINDERT & JERRY SPEILMAN

**SKETCH:**



\* SEE SECTION SUMMARY FOR \*  
RELATIONSHIP TO AREA CORNERS

- LEGEND**
- Number 8 by 30" rebar set with Grant County aluminum cap
  - △ 1" Iron pipe found
  - Number 6 Iron bar found
  - x- Existing fence location

CASC1415WAT1017NR3W69

JUN 14 2001

DEC 11 2000

# GRANT COUNTY CERTIFIED LAND CORNER

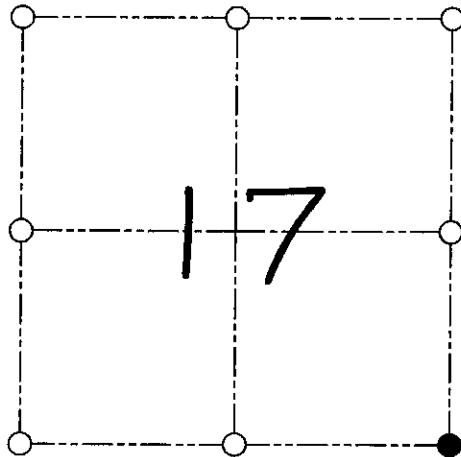
CORNER NUMBER 69

**CERTIFICATE:**

I, Larry L. Austin, do hereby certify that on the 11th day of April, 2000, I found evidence of the Southeast corner of Section 17, Town 7 North, Range 3 West, of the 4th Principal Meridian, and I re-established said corner according to the Wisconsin statutes as shown and described hereon.

Dated this 24th day of August, 2000

*Larry L. Austin*  
Larry L. Austin S-1903



● = CORNER LOCATION

SOUTHEAST CORNER OF  
SECTION 17, T 7 N R 3 W  
TOWN OF MARION

SEAL

**HISTORY OF ORIGINAL CORNER ESTABLISHMENT:**

Corner was originally set in 1833 by Harvey Parke.  
In 1997 Walsh set a 1" iron pipe at this corner.

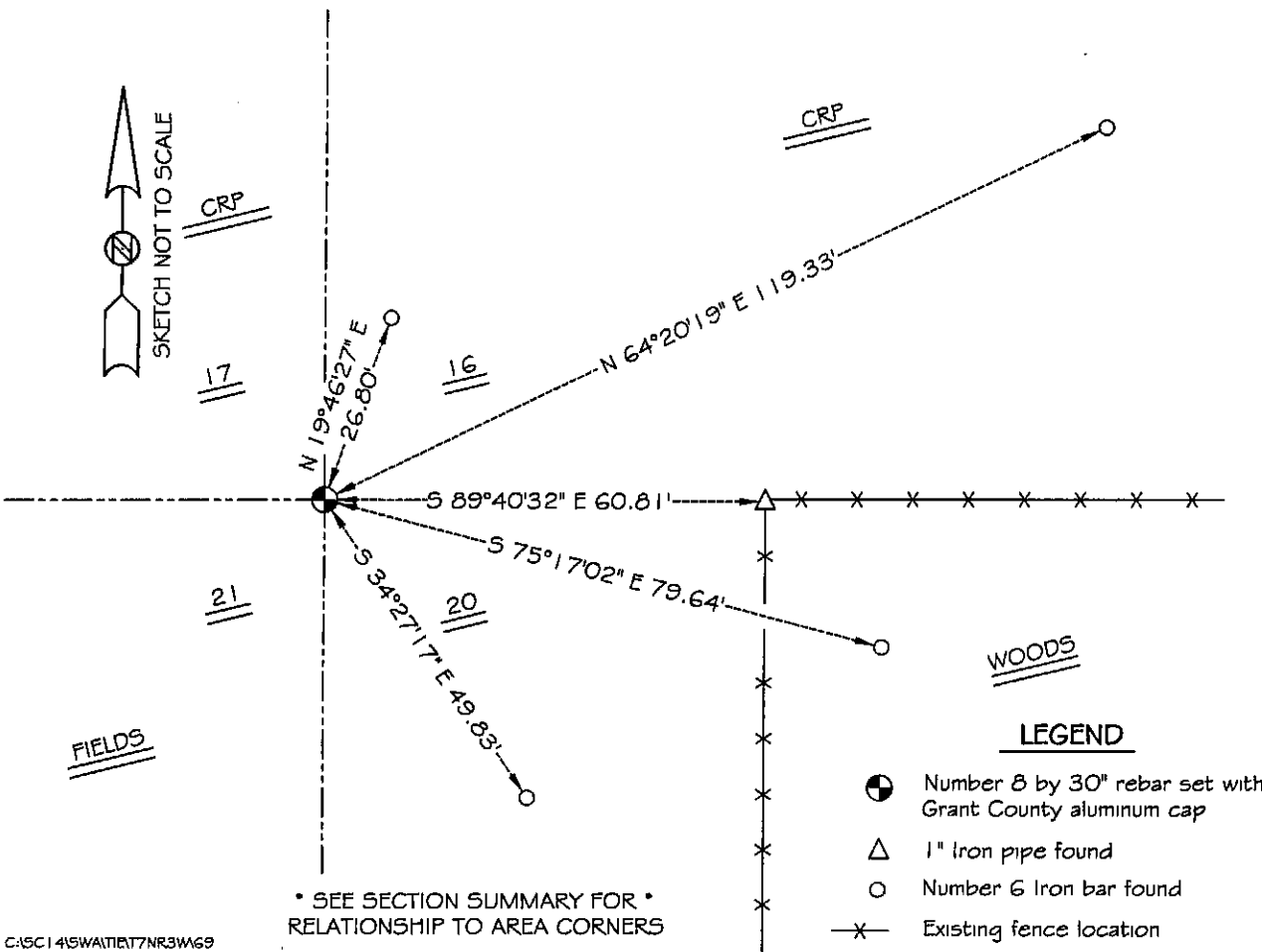
**DESCRIPTION OF CORNER EVIDENCE FOUND:**

After measuring 4 ways from the corner I did not accept the location of the 1" iron pipe. I reset the corner proportionately between the 4 corners. Verified this location using E.D.M. & G.P.S. methods.

**DESCRIPTION OF CORNER AND WITNESS MONUMENTS, references and accessories used to perpetuate the original or re-established location of this corner**

WITNESS TO THE CORNER LOCATION: SHELBY BLINDERT & JERRY SPEILMAN

**SKETCH:**



REC'D JUN 4 1997

# GRANT COUNTY U.S. PUBLIC LAND SURVEY MONUMENT RECORD

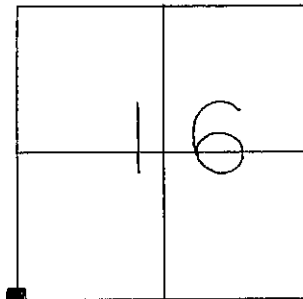
TYPE OF MONUMENT:

TIES ARE AS INDICATED ON SKETCH

WITNESSES TO CORNER LOCATION

Sean M. Walsh

Christopher G. Reedy



CORNER LOCATION

Southwest Corner  
Section 16  
Town 7 North, Range 3 West  
Marion Township

### BASIS FOR MONUMENT LOCATION

After researching the Grant County Survey Records I could not find any reliable evidence that this corner has been perpetuated subsequent to the Original Gov't. Survey. I accepted this location of physical occupation as the best available evidence and perpetuated as shown hereon.

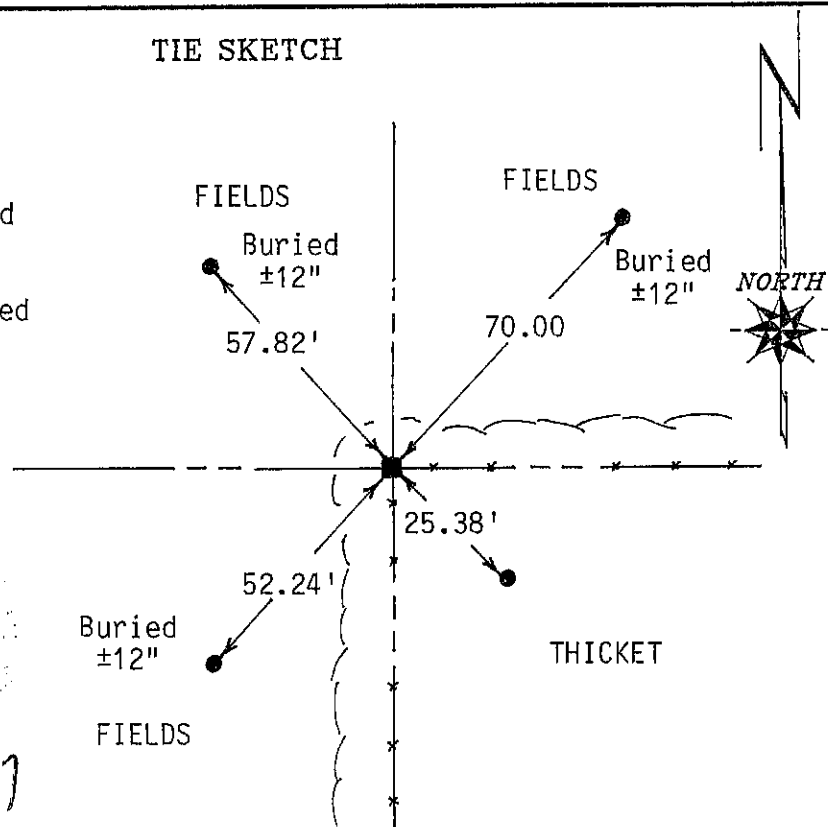
This information is correct and true to the best of my information, knowledge and belief.

### TIE SKETCH

■ - 1" X 24" Iron Pipe  
Placed at Corner

● - 3/4" X 24" Iron Rod  
Set as Tie

Tie distances were taped horizontally.



*Sean M. Walsh*  
4-30-97