

OCT 26 1990

# GRANT COUNTY

## GOVERNMENT CORNER RECORD

W 1/4 CORNER, SECTION 15, TOWNSHIP 7 NORTH, RANGE 3 ~~EAST~~ - WEST,  
TOWN, CITY OR VILLAGE OF MARION

TYPE OF MONUMENT: 3/4" X 24" IRON ROD ELEVATION - M.S.L. DATUM

STATE PLANE COORDINATES: N

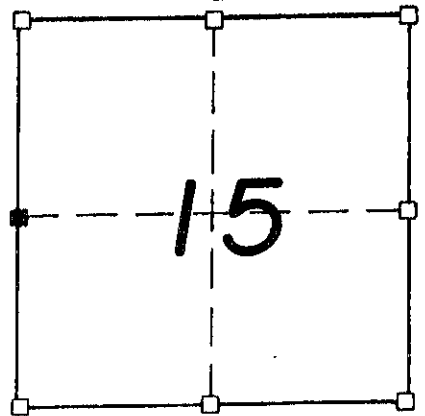
WISCONSIN SOUTH ZONE E

WITNESSES TO CORNER LOCATION

SEAN M. WALSH

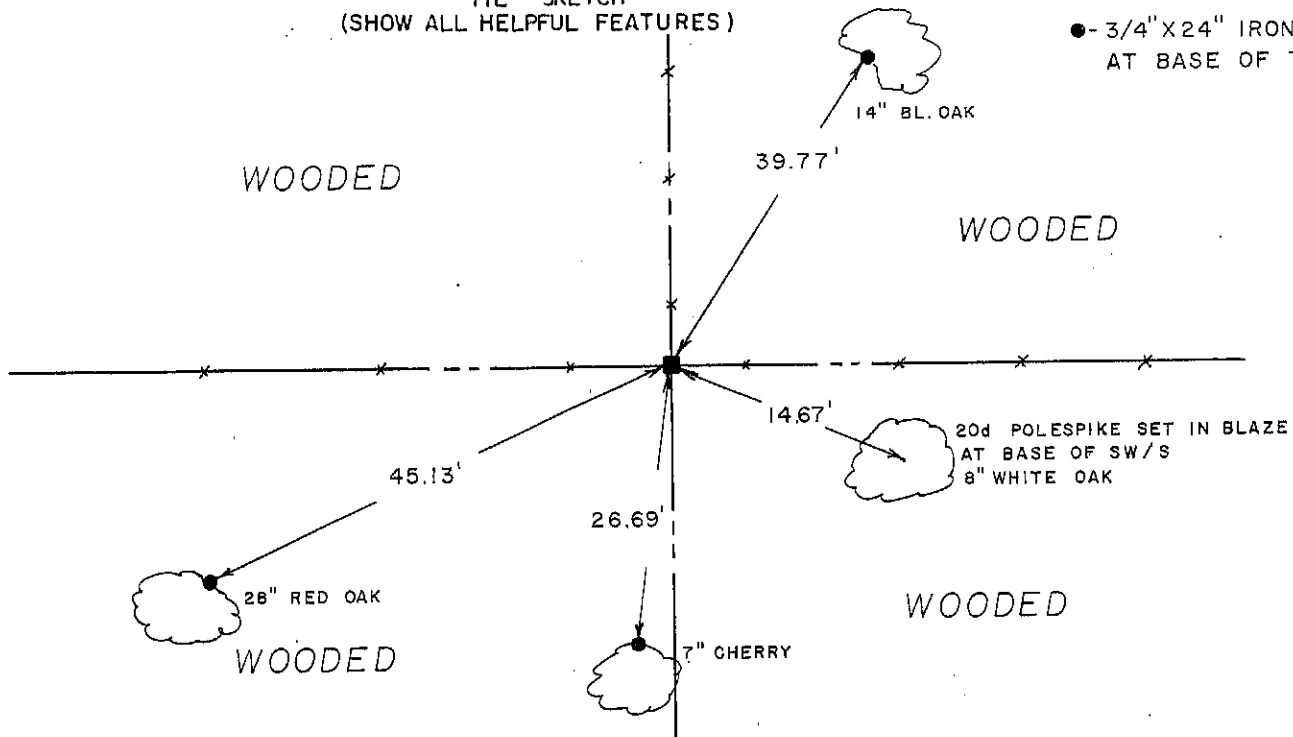
PATRICK J. DEDERICH

SECTION 15, T 7 N, R 3 W  
TOWN OF MARION



■ - CORNER LOCATION  
● - 3/4" X 24" IRON ROD SET AT BASE OF TREE

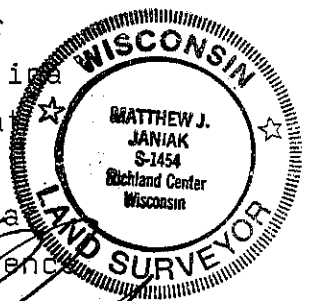
TIE SKETCH (SHOW ALL HELPFUL FEATURES)



SURVEYOR'S CERTIFICATE  
STATE OF WISCONSIN)  
RICHLAND COUNTY )SS

SEAL S- 1454

I, Matthew J. Janiak, DO HEREBY CERTIFY THAT the above corner  
has been established under my direction and supervision in  
accordance with the information contained hereon and that  
this information is correct and true to the best of my  
information, knowledge and belief. This corner was set at  
the occupied location as it was the best available evidence



DATED THIS 3rd DAY OF October, 19 90

REGISTERED LAND SURVEYOR

10.57