

OCT 26 1990

GRANT COUNTY GOVERNMENT CORNER RECORD

NW CORNER, SECTION 22, TOWNSHIP 7 NORTH, RANGE 3 ~~EAST~~ - WEST,
TOWN, CITY OR VILLAGE OF MARION

TYPE OF MONUMENT: 3/4" X 24" IRON ROD ELEVATION - M.S.L. DATUM _____

STATE PLANE COORDINATES: N _____

WISCONSIN SOUTH ZONE E _____

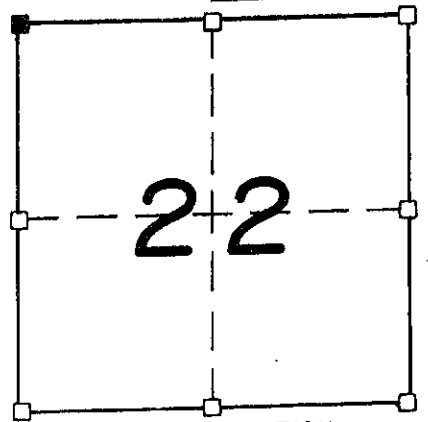
WITNESSES TO CORNER LOCATION

SEAN M. WALSH

PATRICK J. DEDERICH

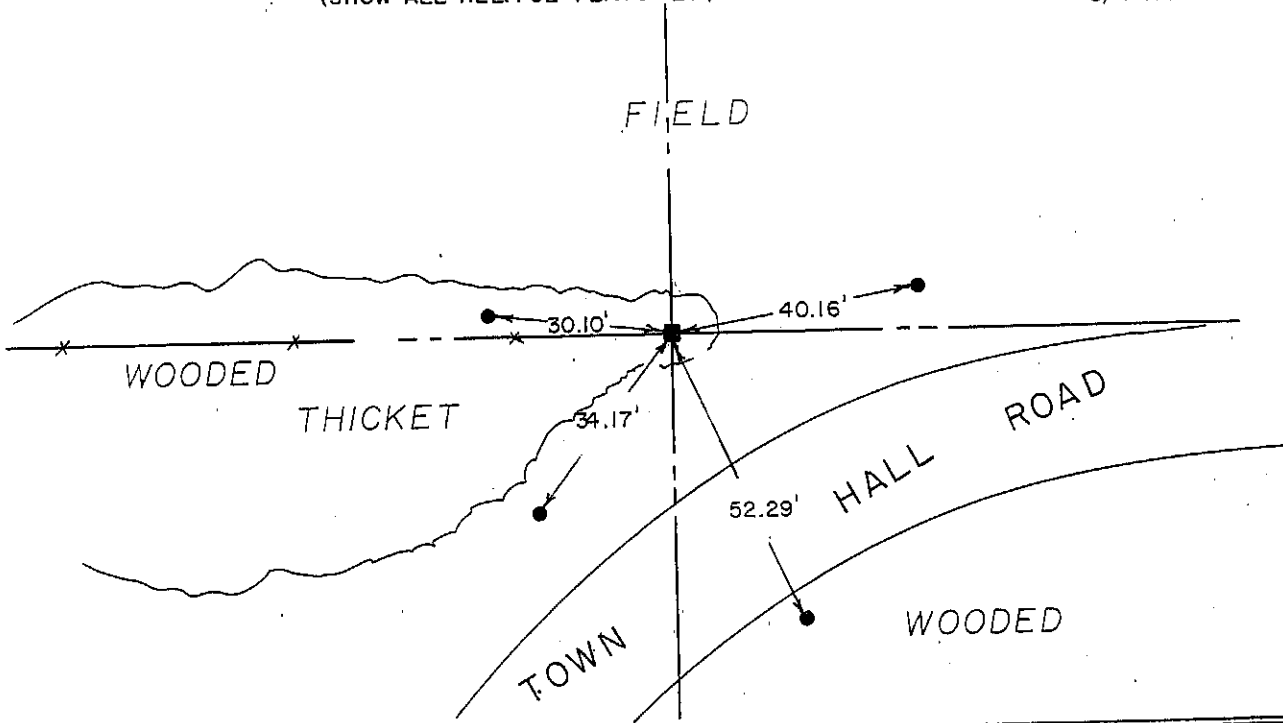


SECTION 22, T 7 N, R 3 W
TOWN OF MARION



■ - CORNER LOCATION
- 3/4" X 24" IRON ROD SET

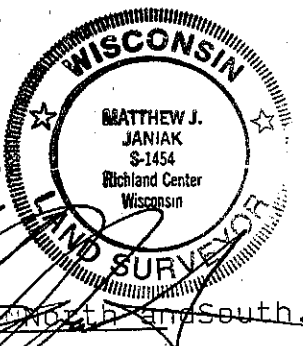
TIE SKETCH
(SHOW ALL HELPFUL FEATURES)



SURVEYOR'S CERTIFICATE
STATE OF WISCONSIN)
RICHLAND COUNTY) SS

SEAL S-1454

I, Matthew J. Janiak, DO HEREBY CERTIFY THAT the above corner
has been established under my direction and supervision
in accordance with the information contained hereon and
that this information is correct and true to the best of
my information, knowledge and belief. This corner was
established at the occupied East/West line and on
a straight line between the two adjacent corners to the North and South.
DATED THIS 3rd DAY OF October, 19 90 REGISTERED LAND SURVEYOR



10-6-90