

U.S. PUBLIC LAND SURVEY MONUMENT RECORD

(As Required By s. A-E 7.08, WI Adm. Code)

History of original corner establishment and subsequent restorations and description of any record, monument, occupational, testimonial or other evidence considered:

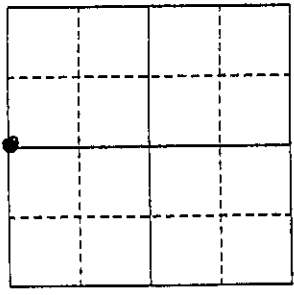
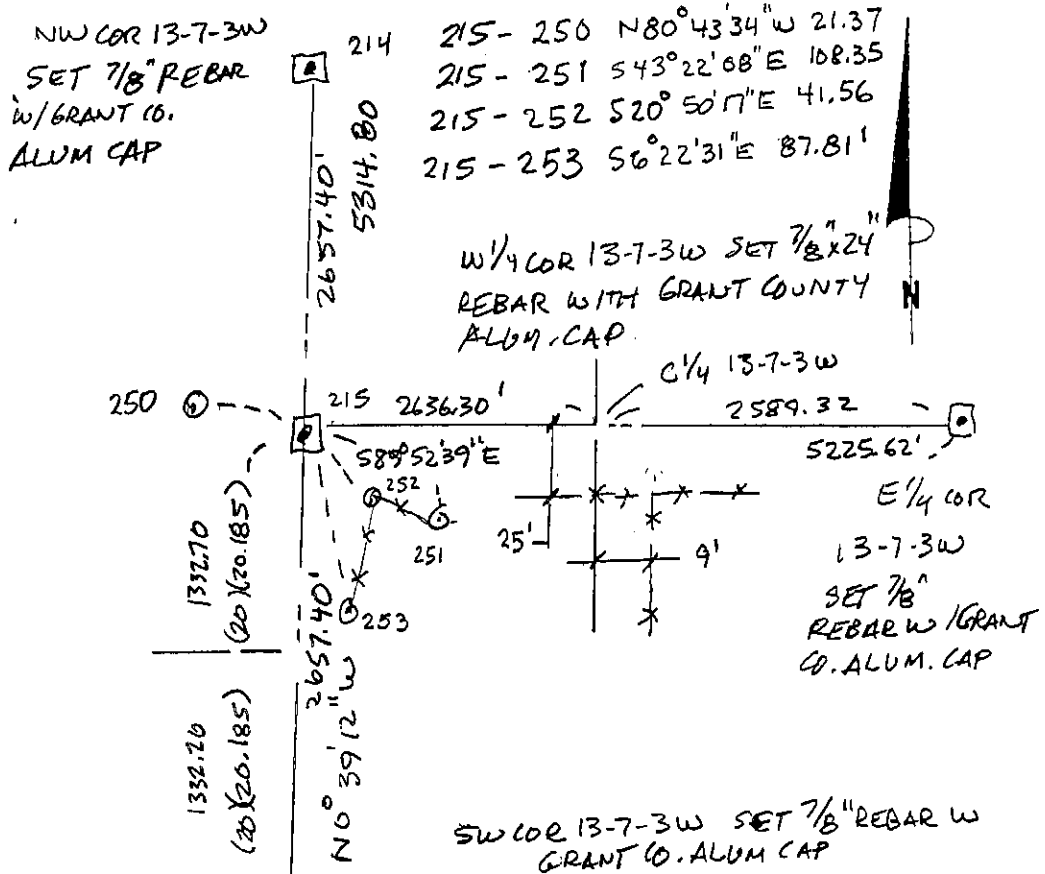
HISTORY IS THE ORIG GOUT SURVEY AND SURVEY BY GOULD DATED 1890 WHICH HE INDICATED ORIGINAL 1 TREE IN GOOD CONDITION. THE AREA HAS BEEN LOGGED SUBSEQUENTLY. NO EVIDENCE FOUND NEAR CORNER. SET CORNER BY SINGLE PROPORTIONATE MEASUREMENT BETWEEN MONUMENTED NW & SW SECTION CORNERS OF 13-7-3W

Corner was: (Check All That Apply)

- Restored through acceptance of an obliterated evidence location
- Restored through acceptance of a found perpetuated location
- Considered a lost corner and reestablished through lost corner proportionate methods (include a plan view drawing showing distances and directions to other Public Land Survey Corners used for proportioning and determining the corner location)
- Restored or reestablished in a location that differs from a previous restoration or reestablishment (include a plan view drawing and indicate what was set and/or found)

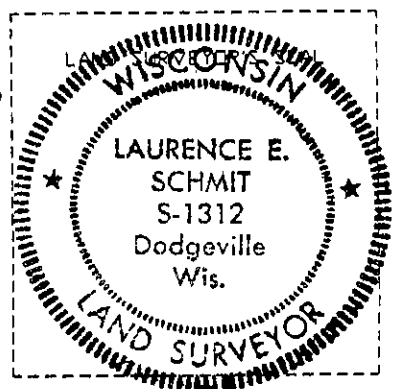
Describe the monument and accessories used to perpetuate the location of this corner. (Include a plan view drawing and indicate what was set and/or found)

The W 1/4
corner of Section 13
T. 7 N., R. 3W ~~X~~,
GRANT County, Wisconsin
Job ID: 995-252
Book # _____



● = Location of Corner

- LEGEND:
- SECTION CORNER AS DESCRIBED
 - SET 5/8" REBAR TIES
 - () RECORDED AS
 - * FENCE



I, LAURENCE E. SCHMIT
Type or print name) certify that the corner location shown on this record was determined by me or under my direction and control and that this U.S. Public Land Survey Monument Record is correct and complete to the best of my knowledge and belief.

Laurence E. Schmit 2-29-2000
Signature Date

Index No. 59