

U.S. PUBLIC LAND SURVEY MONUMENT RECORD

(As Required By s. A-E 7.08, WI Adm. Code)

History of original corner establishment and subsequent restorations and description of any record, monument, occupational, testimonial or other evidence considered:

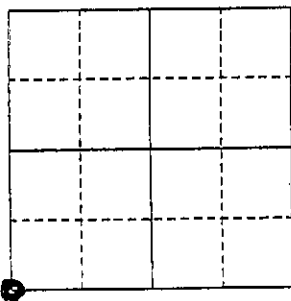
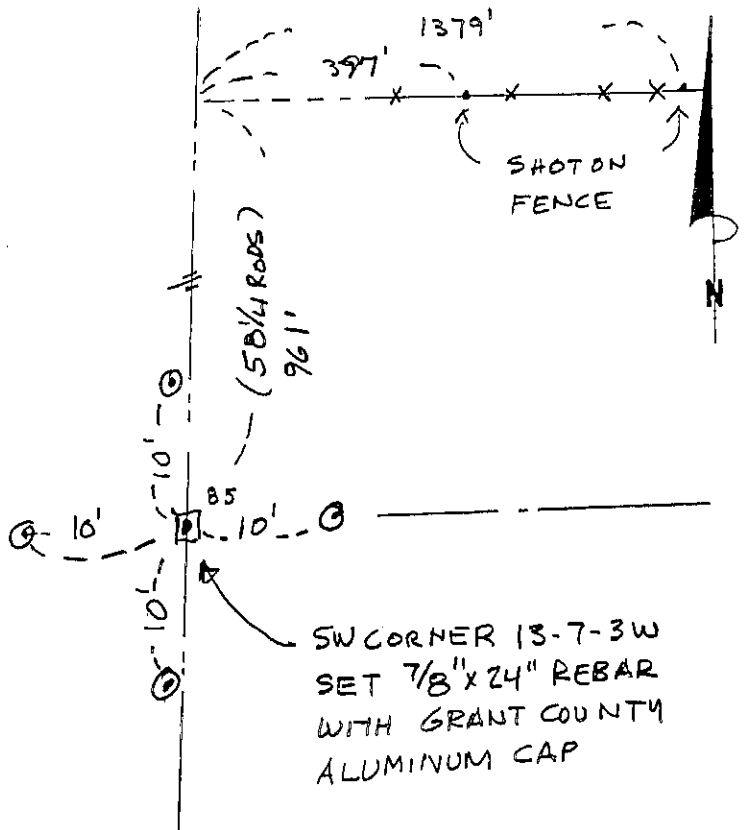
HISTORY IS ORIG. GOVT SURVEY. GOULD VISITED THE W LINE OF THE SW 1/4 OF 13-7-2W IN 1890 ON A SURVEY OF SECTION 14-7-3W. HE INDICATED A STAKE IN A MOUND OF STONE. WE FOUND A N-S FENCE IN THE AREA OF THE CORNER BUT NO MOUND OF STONE. A PROJECTED FENCE INTER SECTION. RECORDED AS BEING 58 1/4 RODS NORTH OF THE CORNER WAS USED TO ESTABLISH THE CORNER LOCATION AFTER GPS TRAVERSE OF W LINE OF SECTION 13 FOR OTHER SUPPORTING EVIDENCE.

Corner was: (Check All That Apply)

- Restored through acceptance of an obliterated evidence location
- Restored through acceptance of a found perpetuated location
- Considered a lost corner and reestablished through lost corner proportionate methods (include a plan view drawing showing distances and directions to other Public Land Survey Corners used for proportioning and determining the corner location)
- Restored or reestablished in a location that differs from a previous restoration or reestablishment (include a plan view drawing and indicate what was set and/or found)

Describe the monument and accessories used to perpetuate the location of this corner. (Include a plan view drawing and indicate what was set and/or found)

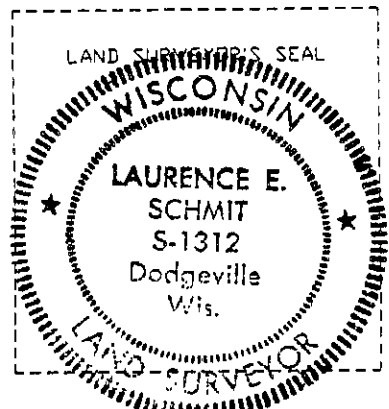
The SW  
corner of Section 13  
T. 7 N., R. 3W E.,  
GRANT County, Wisconsin  
Job ID: 99S-252  
Book # 99-7 p.35



● = Location of Corner

LEGEND:

- SECTION CORNER AS DESCRIBED
- ⊙ SET 5/8" REBAR TIES
- ( ) RECORDED AS
- x- FENCE



I, LAURENCE E. SCHMIT  
Type or print name) certify that the corner location shown on this record was determined by me or under my direction and control and that this U.S. Public Land Survey Monument Record is correct and complete to the best of my knowledge and belief.

Laurence E. Schmit 2-29-2000  
Signature Date

Index No. 63